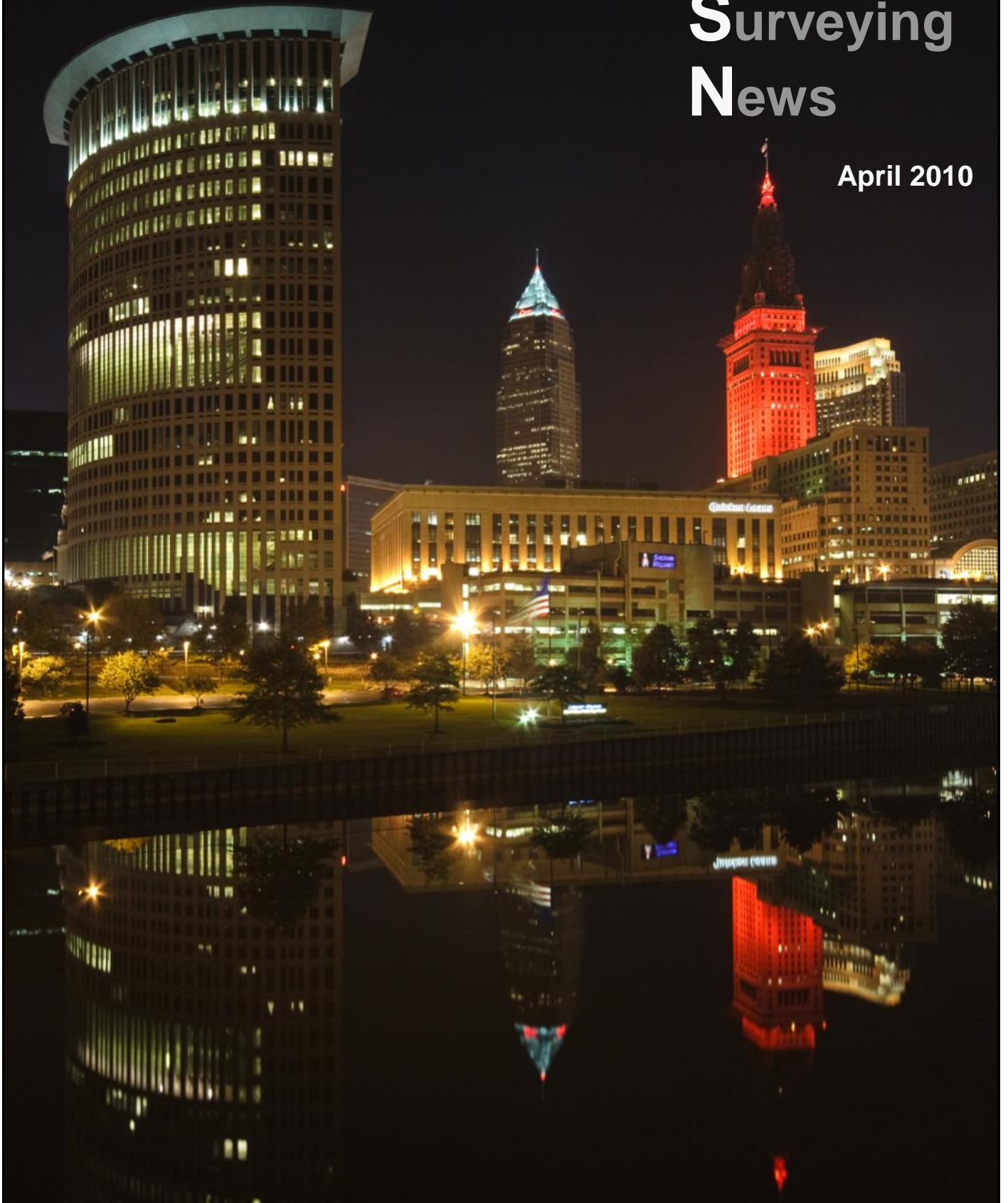


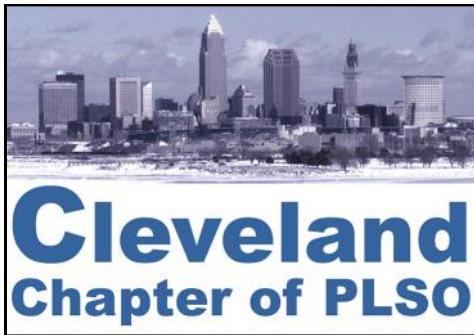
Featured

- Chapter Scholarship Extension

Cleveland Surveying News

April 2010





P. O. Box 81713
Cleveland, OH 44181-0713

Volume 9, Issue 2 Distribution: 236

Editor: Robert Hoy, P.S.
 Website: Rob Krause, P.S.
 Proof: John G. Hoy, P.S.

2010 Advertising Rates:

Full page: 9.6"h x 7.3"w \$400 yr.
One-half page: 4.8"h x 7.3"w \$200 yr.
One-sixth page: 3"h x 3.6"w \$80 yr.

Contact: Robert Hoy, k666@cox.net

All photographs © Robert Hoy
 unless stated otherwise.

ADVERTISER INDEX

- 4 [Avatech Solutions](#)
- 5 [Imaginit Technologies](#)
- 6 [Aerocon Photogrammetry](#)
- 8 [City Blueprint of Toledo](#)
- 9 [Roberts Surveying Supplies](#)
- 13 [GeoShack](#)
- 15 [Precision Laser & Inst.](#)
- 16 [Jake's Stakes](#)

*Recalling the motivation for this chapter's existence and the response we've had to date, our motto should be -
 "United we stand, divided we perish."*

- William J. Haas, 1974

Contents

Features

[Cleveland Chapter Scholarship Extension](#) 3

Meetings

[April CPD Seminar Announcement](#) 3
[March CPD Seminar Review](#) 13
[Executive Meeting Highlights](#) 14

Columns

[Random Lines by John Dailey, P.S.](#) 7
[G.I.S. Layers by Joshua Appleman, GISP](#) 18

Reports

[President's Message](#) 5
[Delegate](#) 10
[Membership](#) 12
[2011 Conference](#) 12
[Editor's Notes](#) 17

Miscellaneous

[2010 Surveyor of the Year](#) 11
[Survey Discs](#) 17
[Chapter Calendar](#) 19

2010 Executive Committee

President	Michael A. Straub, P.S.	440-333-1700	mikes@straubsurveying.com
President-Elect	Dino Lustri, P.S., P.E.	216-387-3781	dino@dlengineeringllc.com
Past President	Timothy J. Feller, P.S.	440-585-9800	timf@mcsteen.com
Treasurer	John J. Bischof, P.S.	440-399-0834	bischof@cvelimited.com
Secretary	Michael A. Ackerman, P.S.	216-642-1130 x115	mackerman@dgbassoc.com
Delegate	George A. Hofmann, P.S.	440-234-5544	george_hm@ameritech.net

Trustees

Communication	Robert G. Hoy, P.S.	216-389-7677	k666@cox.net
Education	Christopher J. Tomko, P.S., P.E.	440-925-0797	ctomko@rewarner.com
Program	Eric W. Short, P.S.	440-366-9618	shorte@windstream.net
Membership	Sean T. Snezek	216-970-0752	sneezeman21@yahoo.com

April CPD Seminar

[Cleveland Surveying News - April 2010](#)

Thursday April 1st

Cost: \$15 PLSO Members, \$50 Non-Members

Proceeds from this seminar goes towards our Scholarship efforts.

Pizza & soft drinks provided

Registration & Pizza: 6:30, Program: 7:00-8:30

Location: Cuyahoga County Engineer's Test lab Facilities at
2433 Superior Viaduct, Cleveland ([Map](#))
free parking with security camera surveillance

Topic: Laser Scanner demonstration and its software and its influence
in today's industry - 1.5 PDH's

Speakers: Alex Cherchian & Greg Schneider
of Leica Geosystems

Contact Eric Short by
Wed. March 31st for reservations,
(needed for accurate food count)
440-366-9618 shorte@windstream.net



Eric Short
Program Trustee

May Seminar Change

The May 6th seminar on instrument maintenance originally scheduled to be held at Robert's Surveying Supplies has been changed.

New Information:

May 6

Topic: GPS & VRS Technologies - 1.5 PDH's

Speaker: Mike Painter from Precision Laser & Instrument, Inc.

Location: Cuyahoga County Engineer's Test lab Facilities at 2433 Superior Viaduct, Cleveland
free parking with security camera surveillance ([Map](#))

Cleveland Chapter Scholarship

The Chapter Executive Committee has extended the application deadline to June 1st.

Our Scholarship page is now available on our website at:

<http://www.plso.com/scholarship.html>

Our scholarship application can also be found at: [Application](#)



Christopher Tomko
Education Trustee

Autodesk Technology. Avatech Expertise. Better Results.

- Consulting
- Implementation
- Surveying Technologies
- Training and Technical Support
- Software and Custom Development



Technology for the World You Build

- Increase production without additional staff
- Reduce cost, rework, redundancies, and errors
- Proven results to increase your bottom line

What can our solutions do for you?

Call our Cleveland office at **877-717-5600** to find out more.

Leica
Geosystems



AVATECH
SOLUTIONS®

Altogether Smarter Design.

Autodesk®
Authorized Value Added Reseller

www.avatech.com

President's Message

[Cleveland Surveying News - April 2010](#)

What does being a member of the Professional Land Surveyors of Ohio mean to you? Think about that a moment while I peruse a couple of other subjects.

What a change in the weather since our last issue! The sun is shining much more often bringing an end to the winter doldrums. Many recent great days have homeowners thinking of making improvements, contractors ramping up activities on their projects, and we surveyors optimistically hoping that the amount of engineering design surveys for architects and engineers will increase over 2009.



Michael A. Straub
President

The phone is ringing again – Straub Surveying received three calls for residential surveys this week! I'm not sure that success is on this company's side for those calls. I asked one of the potential clients what kind of pricing they had received. "Well, the lowest was \$300." My head shook and a feeling of disgust came over me. Quickly regaining my thoughts, I certainly hoped (and hope) someone was just looking for a bargain price and that they had not really received that type of quote. "You'll need to take that price if you are simply looking for the lowest quote. I don't know anyone who does a survey for that price." As usual, I explained what goes into a survey, how we are governed by minimum standards, and what they should expect to see on their survey map. The caller was appreciative and more knowledgeable about what to look for on their map, but I don't think we got the job.

[\(Continued on Page 6\)](#)



CIVIL 3D FOR SURVEYORS

The training you need from IMAGINiT – The Strength behind the Solution

Finally, the survey software and training you've been waiting for.

Your civil engineering department or the firms you survey for have already switched to Civil 3D. Life would be easier, and your time would be more productive, if you could take advantage of it too. We have the class that will take you through the steps of a typical survey workflow: field to finish – designed by surveyors for surveyors. You will receive a certificate that you may use for Professional Development Hours.

Need AutoCAD Civil 3D or Map 3D software? Need help getting started? We've assisted one-man firms and ENR 100 firms, as well as city and county engineers throughout Ohio. With over 100 engineers, surveyors and Autodesk certified instructors, IMAGINiT delivers valuable training and implementation programs designed to empower your team.

Contact Kristen Hannan or Len Horowitz to get started.



A RAND Worldwide Company

The largest ATC provider in North America





Authorized Training Center

www.rand.com/imaginit • Cleveland office: 216-834-8300

Training . Implementation . Software Development . Consulting . Data & Document Management . Asset Management . Design Visualization . Support



AEROCON

Aerocon Photogrammetric Services Inc
Dedicated to providing quality photogrammetric services since 1967

- **Aerial Photography**
- **Digital Orthophotography**
- **Digital Topographic Mapping**
- **Analytical Triangulation**
- **DTM/DEM Surface Generation**
- **LIDAR**
- **Airborne GPS**
- **GIS Services**
- **Volumetric Inventories**

4515 Glenbrook Road
Willoughby, OH 44094-8215
440.946.6277
440.946.2646 Fax
e-mail: skymap@aerocon.com
www.aerocon.com

The globe graphic features the following labels on its segments: AERIAL PHOTOGRAPHY, GPS, AIRBORNE GPS, DTM/TIN, PLANIMETRICS, LIDAR, and VOLUMES. A segment also shows a building with the text 'EST. 1967'.

President's Message [\(Continued from Page 5\)](#)

Ladies and gentlemen, if I may: Please remember we are providing a Professional Service and price accordingly! Yes, we are all hungry, but that hunger is going to last much, much longer than needed if we drop our prices so low that it becomes the norm. 'Nuff said.

So, what does being a part of PLSO mean to you? CPD seminar discounts? Insurance benefits? Camaraderie? Newsletter articles (even a preachy President's Message)?

There's more to be gained as evidenced by a comment I received at our last Executive Committee meeting. (Don't forget, those meetings are open to all members – check the Chapter Calendar.) As I was walking to my car after the meeting, one of our newest members approached me with a smile on his face. "Mike, thanks for inviting me to run for office!" We talked about the knowledge gained, keeping on top of current area survey issues, and realizing that we are not an island with regard to our problems, challenges, and other experiences. It truly is a benefit. I'll have more on this topic later this year.

As always, let's work hard for a prosperous and healthy 2010. Optimism Rules!

[Michael Straub, P.S.](#)
Chapter President

Random Lines

by John E. Dailey, P.S.

I will talk a little about Cleveland Hopkins International Airport this month. Everyone knows it is there and has probably made use of it but not too many people know much about its history. Maybe you were one of the 11 and a half million passengers served by CHIA last year.

The early part of the 20th Century brought about a great deal of interest in this new science of powered flight. Cleveland was in the forefront of this growing technology with several aircraft manufacturers in the area and several small airports that were carved out of local farmers fields.

A municipal airport for the city was envisioned shortly after World War I, but the airfield did not become a reality until the federal government was satisfied that the city could provide an adequate facility for U.S. Air Mail planes stopping in Cleveland on their coast-to-coast flights.

In the early 1920's, City Council voted to buy about 1040 acres of land for a municipal airport "out in the country" in Brook Park Village, Middle burgh Township at the southwest corner of Rocky River Drive and Brookpark Road. The fact that at that time it happened to be outside the City limits was kind of ignored. The plans were finalized and construction began.

The airport was officially dedicated on July 1, 1925, the first municipally owned airport in the United States. It opened amid great fanfare when more than 100,000 people turned out to enjoy the event, which included the first mail flight and a "flying circus" of planes with lit torches on their wings. (Considering that these planes were made of wood and canvas, this had to be a pretty tricky show.)

The airport continued to grow and to handle more flights and it has been the site of many other airport firsts, such as the first control tower, the first radio equipped air traffic control tower, the first paved landing area (a paved area covering almost 85 acres in 1938, at that time the largest paved area in the world), the first airfield lighting system for night time operations.

In 1929, a flying circus called the National Air Races came to the Municipal Airport, bringing with it some of the most famous flyers in the World

along with about 90,000 spectators. The Air Races continued here until the beginning of World War II when they were postponed for the duration. They returned in 1946 and remained until a deadly crash in 1949 that spelled the end to air racing in Cleveland.



John E. Dailey

Airport expansion continued and in 1951, the name was officially changed to Cleveland Hopkins International Airport in honor of its founder, former city manager William R. Hopkins, on his 82nd birthday.

In 1968, CHIA became the first airport in the United States to have direct rail transportation access from the terminal to the city center. Since then, direct airport links have been copied by most other American and foreign airports.

The CHIA continues to expand and modify, most recently with the addition of another almost 10,000 foot runway, giving the airport the capability of longer trans-oceanic flights, but right now the financial incentive needed to make that a reality is lacking. Its time will come again.

We often speak with pride of the greatness of our "Emerald Necklace" but completely disregard this "jewel" in our midst. CHIA is an important part of our community and its economy and will continue to be so into the future.

On another subject, you know that I am somewhat of a nut about survey crew safety. I have made it a point that I was never going to be the one to have to tell a wife, mother, parent or child that someone on one of my crews was not going to make it home that night and after 57 years in the profession I have never had to.

I have written several times before about the importance of safety to survey crews and have given several seminars on the subject but somehow bad things still happen.

One of our Chapter members was injured recently while setting up an instrument. Not knowing all the details, I have to presume that it was in the street. I sincerely hope that this

(Cont'd on Page 9)

Your
Complete
Source



Sales • Service • Rental • Leasing • Training • Support

 **Trimble**



SOKKIA



SCHONSTEDT
INSTRUMENT COMPANY

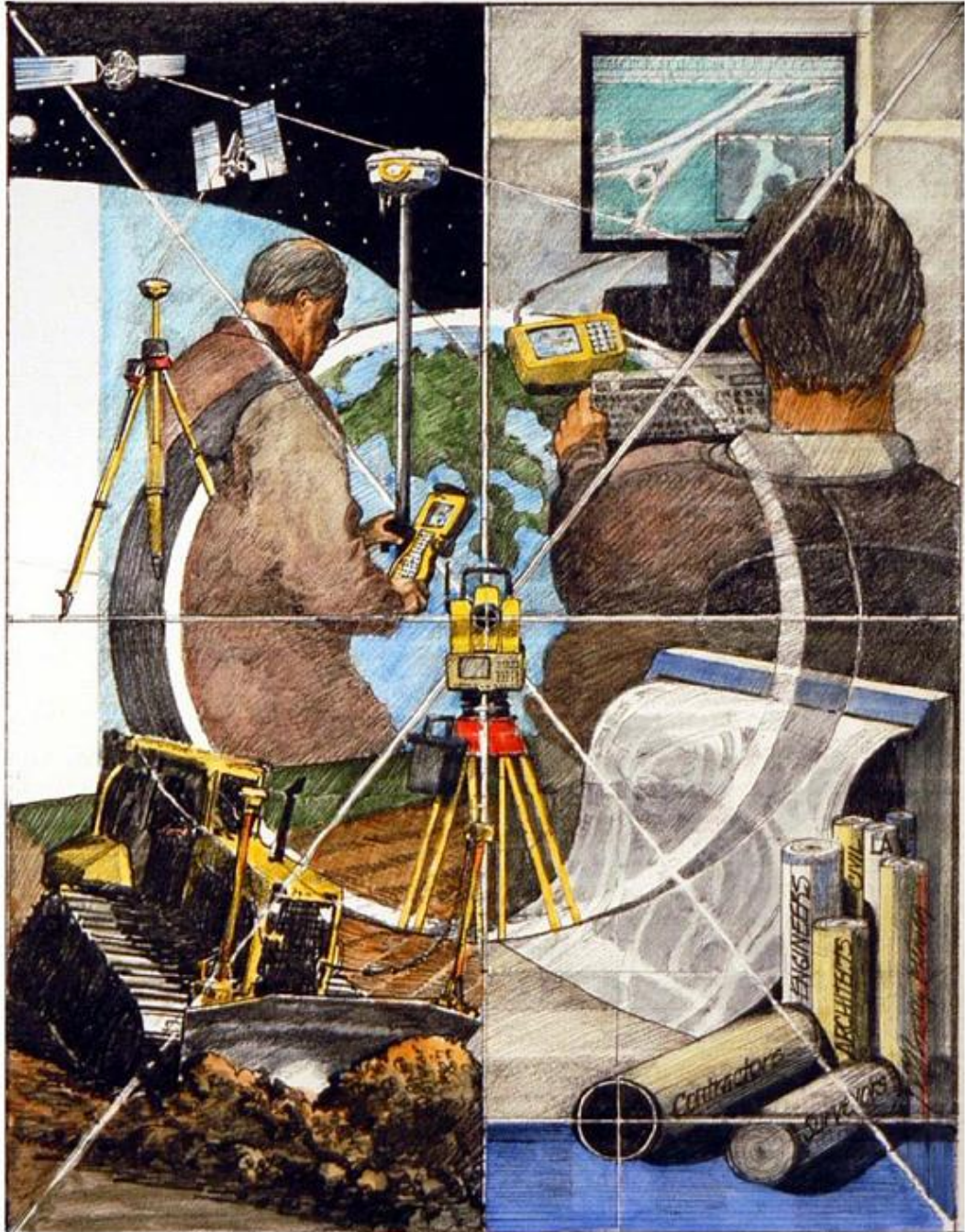
Lufkin®

CRAIN®



ROLATAPE®
CORPORATION

CST



2010 Madison Avenue - Toledo, OH 43604

Tel: (419) 243-7271 Fax: (419) 243-6418 Toll Free: 800-548-1503

E-Mail: cbt@cityblueprintoftoledo.com

Random Lines

(Cont'd from Page 7)

[Cleveland Surveying News - April 2010](#)

Professional Surveyor had proper safety cones spread out and that he was wearing a safety vest, but I do not know that for a fact.

There is an old adage that "familiarity breeds contempt" and that may be what happens to us when we spend so much time working in streets next to moving traffic. This familiarity causes some of our practitioners to have a blatant disregard for basic safety measures. This may be a result of becoming too accustomed and numb to the real dangers of the roadway. More cars use the streets now than in decades past, often traveling 10 M.P.H. or more over the posted speed limit, and drivers are more distracted by mobile communication and music devices. Surveyors might think that it is too time consuming to spread out the safety cones or signs, but hospitals stays and rehab are much more costly and life disrupting. Utility companies and contractors make the time and have the manpower available to work safely on the roads, and so should Surveyors.

[John E. Dailey](#), Past

Your Ad Here

2010 Full Year Advertising Rates:

Full page:	9.8"h x 7.3"w	\$400
1/2 page:	4.5"h x 7.3"w	\$200
1/6 page:	3"h x 3.6"w	\$80

Contact CSN Editor for prorated costs:

Robert Hoy
k666@cox.net
 216-389-7677

HIGH GRADE HARDWOOD SURVEY STAKES

DELIVERY AVAILABLE

- TOPCON DEALER
- SOKKIA DEALER
- FIELD SUPPLIES
- INSTRUMENT SALES, SERVICE & RENTAL
- GPS TECHNOLOGIES
- FIELD EQUIPMENT



ROBERTS

Surveying Supplies

WWW.ROBERTSSURVEYING.COM

5758 Ridge Road Parma, Ohio 44129

Phone (440) 842-2218

Fax (440) 842-0802

Delegate Report

[Cleveland Surveying News - April 2010](#)

MEETING AGENDA Friday March 12, 2010



George Hofmann
Delegate

4.0 Unfinished Business

- 4.1 Surveyor of the Past Plaques - Barb Jones
- 4.2 Website Proposal - Melinda Gilpin
- 4.3 Soil Scientists Issues - Dean Frederick
- 4.4 Proposed Removal of PS Requirement for County Engineer - Dean Frederick
- 4.5 Statute of Limitations - Rose Coors
- 4.6 Trumbull County Tax Map Issue - John Francis

5.0 New Business

- 5.1 New Members (See Attached List) - Bob Akins
- 5.2 Review of Special Committees - Rion Myers
- 5.3 Appointment of a Member to the Scholarship Fund Board - Rion Myers

6.0 Inter-Association Delegates

- 6.1 CEAO - Dean Ringle
- 6.2 ODOT - Jim Kenyon
- 6.3 State Board of Registration - Paul Dinan
- 6.4 OGRIP - Stu Davis

7.0 Committee Reports

- 7.1 Special Committees
 - 7.11 Political Action - Brad Kramer
 - 7.12 Standards - Brad Kramer
 - 7.121 Change in Law Regarding Metes and Bounds
 - 7.122 Monumentation of Railroads
 - 7.123 Preservation of Monumentation
 - 7.124 Minimum Standards for Plat Revision
 - 7.125 GPS Standards - Jim Kenyon
 - 7.126 FEMA Flood Mapping
 - 7.13 State Line - Dean Ringle
 - 7.14 Historic Review - Mike Besch
- 7.2 Newsletter Editor - PLSO Staff
- 7.3 NSPS Governor - Mike Besch
 - 7.31 Trig Star - Paul Dinan
 - 7.32 CST Coordinator - Pat Leonhardt
 - 7.33 Geocaching Coordinator - Bob Akins
- 7.4 Standing Committees
 - 7.41 Program - Dean Frederick
 - 7.411 Annual Conference Updates
 - 2010 - Miami Valley - Brad Kramer
 - 2011 - Cleveland - John Hoy
 - 2012 - Central Ohio
 - 2013 - Cincinnati and Southwestern

- 7.412 Fall Seminar Updates
 - 2010 - Firelands - Phil Rosebeck
 - 2011 - Tuscarawas Valley - Bob Akins
 - 2012 - Toledo - Pat Leonhardt
- 7.42 Membership - Bob Akins
- 7.43 Interprofessional Affairs - A. J. Myers
- 7.44 Education - Dean Frederick
- 7.45 Legislation - A.J. Myers
- 7.46 Finance - Paul Dinan
- 7.47 Past Presidents Council - Dean Frederick, et al.
- 7.48 Scholarship - Rocky Lomano
- 7.49 Scholarship Fund Board - Frank Snyder
- 7.50 Management Review - Rion Myers

8.0 Chapter Delegate Reports

- 8.1 Askega Chapter - Jim Donathan
- 8.2 Central Ohio Chapter - Brian Bingham
- 8.3 Cincinnati Chapter - Bob Heidkamp
- 8.4 Cleveland Chapter - George Hofmann
- 8.5 Congress Lands Chapter - Isaac King
- 8.6 Firelands Chapter - Tim Riley
- 8.7 Miami Valley Chapter - Harry Herbst
- 8.8 Mohican-Killbuck Valley Chapter - Jim Kenyon
- 8.9 Muskingum Valley Chapter - Rob Lowe
- 8.10 Northwest Ohio Chapter -
- 8.11 Ohio State University Student Chapter - Domonic Brigano
- 8.12 Ohio Valley Chapter - Al Smith
- 8.13 Scioto Valley Chapter - George Seymour
- 8.14 Southwestern Chapter - Rose Coors
- 8.15 The Thomas Hutchins Chapter - John Francis
- 8.16 The Univ. of Akron Student Chapter - Luke Walker
- 8.17 Toledo Chapter - Bryan Ellis
- 8.18 Treaty Lands Chapter - John Jauert
- 8.19 Tuscarawas Valley Chapter - Dave Bodo
- 8.20 Western Reserve Chapter - Hunsicker

9.0 President-Elect's Report - Brett Tieben

10.0 PLSO Staff Report - Melinda Gilpin

11.0 President's Report - Rion Myers

Executive Committee Meeting - Friday March 12, 2010

Meeting call to order 6:06 P.M.

1.3 Alternate Delegates seated

2.0 Minutes for Nov., 2009 and January 2010 were approved. Minutes for Sept. 2008 and January 2009 are still outstanding.

3.0 Treasurers report for Dec., 2009, January 2010, and Feb. 2010 were submitted.

4.1 Surveyor of the past Plaques are almost completed, should receive soon.

4.2 Web site designer to make changes to site as directed.

4.3 Soil Scientist Issues: No further report. Dean Frederick reported that manufacturers of septic systems are also doing survey work.

4.5 Statute of limitations: Rose Coors reported that the committee is stuck on what date should be used? Most in attendance agreed that it should be the date the surveyor signed the plat. The committee would like the statue to be set at 4 years.

4.6 Trumbull County tax map Issue: John Francis states that the engineer is not reviewing plans or is he overseeing the tax map department, the department is under the GIS department. The auditor will not let the engineer do his job.

5.1 New members: Bob Akins made a motions to accept two professionals, 1 affiliate, 4 student and 4 reinstatements, Motions passed.

5.2 Review of Special Committees: President Rion Myers is planning to form a new committee to Review Employee Handbook, also a new committee to for Fund raising.

5.3 Ed Miller was appointed as a member of the Scholarship board.

[\(Continued on Page 11\)](#)

Delegate Report *(Cont'd from Page 10)*

[Cleveland Surveying News - April 2010](#)

- 5.4 Dave Bodo reported that Environmental groups are practicing surveying, the board asked him to gather evidence and asked that anyone else that has evidence to forward it to the board.
- 6.2 ODOT: Jim Kenyon reported that ODOT is updating its training specifications for Protecting and Restoring Road and Property monumentation.
- 6.3 State Board of Registration: The state board's recent appointment to the board is a dual license. It is the Executive board of PLSO opinion that this position should be filled by a P.S. only.
- 7.11 Political Action: PAC Fund balance \$2,884.85.
- 7.122 Monumentation of Railroads: The state boards is flowing the lead of N.S.P.S.
- 7.125 GPS Standards: Jim Kenyon reported that the state is looking at developing a set of standards
- 7.126 FEMA Flood Mapping: The new digital maps do not have bench marks on them, due to the fact that it is uncertain what datum the old bench marks were set at.
- 7.14 Historic Review: Temporary Exhibit will be set up at the State House for National Surveyors Week. March 12, 2010
- 7.2 Newsletter Editor: Melinda Gilpin reported that the next newsletter will be out shortly.
- 7.32 CST: No testing is planned to be held at the 2010 Fall seminar since there has been no demand for it at the last two seminars.
- 7.41 Program: Dean Frederick has been named the new chair replacing Bud Payne who had served in this position for many years.
- 7.411 2010 Annual Conference reported that they had made a profit of approximately \$15,000 and that their total attendance was 387.
- 7.412 President Myers reported that the executive committee will meet on October 7, 2010 at the Fall seminar at the Kalahari Resort. It was also reported that The Kalahari Resort will be offering additional packages to PLSO members that wish to bring their families and make it long weekend.
- 7.421 Bob Akins reported that the updated Membership Brochure is completed. Melinda Gilpin would like to make a special mailing, targeting all license surveyors that are not currently members. Brochures will also be distributed to individual chapters for their use and also be published on the web.
- 7.48 Scholarship: Rocky Lomano has been appointed to the Scholarship board. Scholarship guidelines have been revised.

Respectfully submitted, George A. Hofmann

2010 Surveyor of the Year

To the membership,

Being awarded the Cleveland Chapter "Surveyor of the Year" for 2010 is the highlight of my many years in this profession. To be welcomed into this elite group of surveyors that have received the award in the past is an honor that I will always treasure.

I want to thank Sean Boland (Surveyor of the Year recipient in 2008) for chairing the committee and for his gracious words at the presentation which was held at our annual meeting. Also, it was nice to speak with last year's recipient, Louise Veverka and follow in her footsteps.



John Bischof

When I started in this profession with the Western Reserve Engineering and Surveying Company in 1971, I never dreamed that one day I would achieve this honor. I owe a great deal of thanks to three special surveyors that mentored me over these many years, J. Howard Flower (Surveyor of the Year recipient in 1999), Richard Hantel (Surveyor of the Year recipient in 1993) and William Vondra (Surveyor of the Year recipient in 1992) for instilling in me not only a commitment to do my best in performing any survey work but also to become involved in PLSO, the organization that strives for the betterment of our profession. Finally, a thank you must go to the entire Cleveland Chapter membership for supporting me in the various chapter offices that I have held over the past several years. The relationships that have been built through this organization have greatly aided me in my work.

John J. Bischof

Membership Report

[Cleveland Surveying News - April 2010](#)

Membership interest in the Cleveland Chapter of the PLSO has been down for the last few fiscal quarters, undoubtedly following a similar pattern to the current economic state. While the fourth quarter gross domestic product (GDP) showed a 5.9% increase for the United States, signaling the end of the recession, the unemployment rate climbed to 10.4%. Seeing that the recovery period may take longer than expected, many Americans continue to build a nest egg and limit discretionary spending, which include membership fees.

However, I am hoping that the continued recovery of the economy, along with growing consumer confidence, will help grow the Cleveland Chapter of the PLSO in the future. With that, the Cleveland Chapter of the PLSO would like to welcome back Kathleen A. McGervey to the organization.



2011 Conference Committee

Conference dates: Wednesday evening, February 9th through Friday afternoon, February 11th, 2011.

There has been a change to the 2011 Conference Committee. George Hofmann is our Registration Chair. His experience on previous conferences make him a welcome addition.

The committee met on March 15, 2010 for a status review.

- The schedule & proposed program is centered on three main categories: professional, business and technical. Planning is going well but if you have a suggestion please contact Robert Hoy.
- At our request, the hotel provided an "all day meal proposal" which covers breakfast, morning refreshments, lunch and an afternoon snack. I think everyone will be pleasantly surprised.
- We recently measured the exhibit hall and determined that we can have about fifteen exhibitors, a refreshment area, the PLSO auction display area and as many as 288 seats at round tables in the room. Speaking of the PLSO benefit auction, Mike Straub will be looking to our chapter members for donation items. Any surveying or mapping items or memorabilia of historical interest are perfect. Remember, the auction benefits the PLSO Scholarship fund or the PLSO political action fund. You choose which fund your donation benefits.
- The Hospitality Room will be operated differently than in the past. For the last few years all hotels are requiring that they supply the food & drink. Cleveland Chapter members have a good track record when it comes to making donations that cover the expense of the Hospitality Room. We hope that we can raise enough donations that we don't have to consider a cash bar. Tim Feller is the Hospitality Chair that will gladly accept your donation to this cause.
- One of the Registration Chair's responsibilities is to find volunteers to monitor the CPD sessions and/or help at the registration desk. Call George Hofmann if you're interested.
- You may have noticed the Wednesday through Friday schedule we're trying next year. This is a first for PLSO and it offers a new opportunity: An after the conference event Friday evening. If you have any ideas give us a call.

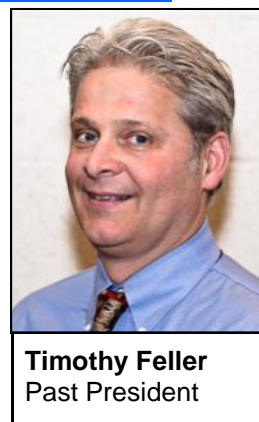


CPD Seminar Review

March 4, 2010

Aerial Photogrammetry by Aerocon Photogrammetric Services

A special thanks to Aerocon Photogrammetric Services, Inc. for hosting a very interesting and informative seminar at their office in Willoughby, Ohio. It was a great opportunity to learn the accurate way to set aerial targets for a flight mission. A very sharp and distinct corner on a target aids the photogrammetrist in achieving his/her accuracy goals. A painted white chevron target on hard surfaces and a white plastic material cross on grass are preferred methods.



Timothy Feller
Past President

Often time weather and just plain scheduling dictates that the flight mission needs to occur before a field crew can establish ground targets. In these instances the photogrammetrist will indicate where both the horizontal and vertical control will need to be collected. Usually a black and white photo tile with a specific description of the physical point will be provided to the surveyor for these observations. A photograph of these locations should be made by the surveyor and included with the field notes to insure everyone is in agreement as to the point.

Realizing the number of tiles required to produce to a photomosaic is a bit mind numbing, but the software currently available is capable of managing these images. During the drawing process there is quite a bit of human involvement as far as placing physical features such as manholes, hydrants and utility poles on the drawing. These features are all observed and tagged by a cad technician viewing a twin screen monitor with specialized stereo adapters.

(Continued on Page 14)

GeoShack®
Everything for Jobsite Accuracy.

TOPCON

SOKKIA

in the Palm of Your Hand

ultimate in Affordability & Versatility

Contact your local representative for a FREE demonstration! ... Tom Bacon (440) 343-2285 or tbacon@geoshack.com

883 Hampshire Road, Ste. J Stow, OH 44224... (800) 527-3762... www.geoshack.com

CPD Seminar Review *(Cont'd from Page 13)* [Cleveland Surveying News - April 2010](#)

When planning to incorporate aerial photography in a project it is very important to know what accuracy your client is expecting. The limits should be clearly defined to avoid unnecessary flight lines, film developing, scanning and cad work.

Aerial photography can be a useful, highly accurate and time saving tool. Once again thanks to Aerocon for providing the personnel, their office, the equipment and especially the pizza and soft drinks.



Chapter Members view stereographic digital images with 3-D glasses

Executive Committee Meeting Highlights

March 15, 2010

Parma City Hall.

In attendance: All officers, John Hoy, Ken Hejduk, and Tom Snezek.

Chapter Delegate: The proposed removal of PS requirements of County Engineers was updated. George will continue to voice the concerns of the Cleveland Chapter and its members with the State Chapter.

Communication: The next issue of the Cleveland Land Surveyor will be ready to send out at the end of the month.

Education: The Scholarship application deadline has been extended to June 1, 2010.

President Straub filled positions on the scholarship committee.

Focus will be on next year's Trig Star competition.

Bob Hoy and Mike Ackerman will update the handbook to reflect the added duties to the Education Trustee.

Conference: John Hoy said the conference planning was on schedule. John gave ideas for possible items to donate to the auction.

New Business: Tom Snezek reported Geodetic Monuments should be added to the Cuyahoga County GIS web site by the middle of May.

Tom discussed the feasibility of scanning the remaining original tax maps for public use and possible help from the chapter.



Michael Ackerman
Secretary



Michael Straub conducts his 1st excom meeting at Parma City



Precision Laser & Instrument, Inc.

WWW.LASERINST.COM



**24 Month 0% Interest
Financing Available**



**CLEVELAND
888-714-GPS3
CINCINNATI
888-714-GPS2
COLUMBUS
800-714-GPS1
PITTSBURGH
724-266-1600**

Executive Committee Meeting Minutes

[Cleveland Surveying News - April 2010](#)

January 11, 2010 Parma City Hall, 6:05 pm.

In attendance: Jack Hoy, John Hoy, John Dailey, Dino Lustri, Chris Tomko, Sean Boland and all officers except Eric Short and Robert Papotto.

Secretary's minutes: Executive Committee meeting minutes from November reviewed and accepted.

Chapter Delegate: George Hofmann highlighted the January Executive Meeting from Columbus. The meeting did not have quorum as a result of bad weather. Those present, proceeded with the meeting. Motions were sent via email to committee members for voting. (See report)

Treasury: John Bischof submitted a written report for November and December 2009.

A motion to donate \$75 to Trig-Star was approved.

Communication:

Bob Hoy gave an update on the newsletter advertisers.

Issue number 2 of the Cleveland Land Surveyor was sent in December.

The letterhead will be updated to include the 2010 Executive Committee Officers.

Education:

No report

The website will be updated to include the scholarship information.

Membership:

Sean Snezek gave an update on membership and reviewed the potential drop list.

Program:

The December 5, 2009 seminar by John Dailey was reviewed.

Dates for the spring seminar need to be decided to be included in the

[\(Continued on Page 17\)](#)



Michael Ackerman
Secretary

Jake's Stakes

AMISH MADE

8200 Camp Road Homerville, Ohio

SURVEYING and CONSTRUCTION STAKES

High quality, light colored, HARDWOOD and smooth

MARKER STAKES

Bundle of 50	
18" x 1 5/8" x 1/2"	\$0.18 ea
24" x 1 5/8" x 1/2"	\$0.20 ea
30" x 1 5/8" x 1/2"	\$0.25 ea
36" x 1 1/2" x 7/16"	\$0.28 ea
48" x 1 1/2" x 7/16"	\$0.36 ea
48" x 7/8" x 1/2"	\$0.24 ea

SQUARE HUBS

Bundle of 25	
12" x 2" x 2"	\$0.24 ea
18" x 2" x 2"	\$0.32 ea
22" x 2" x 2"	\$0.36 ea

WEDGES HUBS

Bundle of 50	
22" HUB MARKER	\$0.13 ea/Bundle of 100
9"	\$0.13 ea
12"	\$0.15 ea

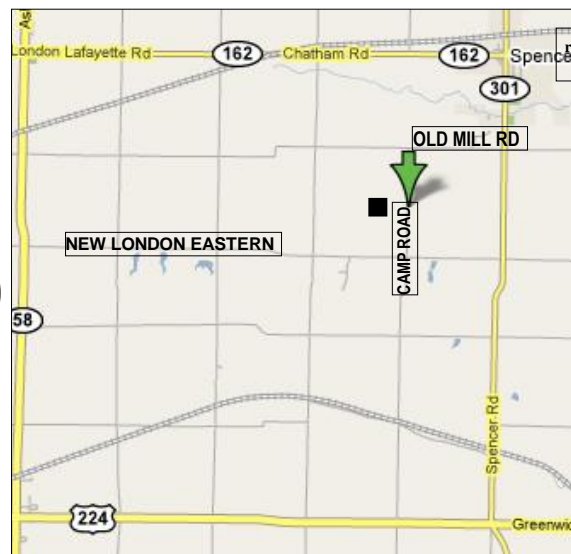
METAL REBAR RODS

Available Any Length Call for \$

■ ■ ■ ■ ■ ■ ■ ■ ■ ■
NO ORDER TOO
SMALL or TOO
FAR
LARGE INVENTORY
 ■ ■ ■ ■ ■ ■ ■ ■ ■ ■

**ORDERS FILLED
RAPIDLY!**

**FREE DELIVERY ON
LARGE ORDERS**



IF WE DON'T HAVE IT - WE MAKE IT!

DELIVERY AVAILABLE : CALL Dwight at Spencer Feed & Supply 330-648-2111

*** WE DELIVER ANYWHERE * WE DELIVER ANYWHERE * Fax Orders: Attn. Dwight 330-648-2552**

Executive Minutes (Cont'd from Page 16)

[Cleveland Surveying News - April 2010](#)

next newsletter.

The Cleveland PLSO Treasury report will be submitted to the State in mid year.

Old Business:

John Hoy stated a contract has been signed with The Intercontinental Hotel for the 2011 Conference in Cleveland.

The January 28 annual meeting was discussed.

New Business:

John Dailey suggested nominations for Surveyor of the Past.

Results of the 2010 Elections were announced

Motion was passed to recycle the ballots.

It was announced John Bischof is the 2010 Surveyor of the Year.

Effects as a result of counties eliminating tax map departments were discussed.

Meeting adjourned at 8:07 pm.

Respectfully Submitted,
Michael A. Ackerman

Editor's Notes

Our new ad from TGPS, that started in January, is missing from this month's newsletter. Hopefully it will be replaced by a Leica ad in the May issue of the *Cleveland Surveying News*. Look for the golf outing flyer to appear in the next newsletter as well.

Survey Discs Collection #1 \$100 Collection #2 (1 DVD or 4 CDs) \$25

Disc 1 of Scanned Surveys

Approximately 7,000 larger surveys (stored in flat files) were scanned in 1999 in part for preservation because the document storage location at the time was not very well protected against weather extremes.

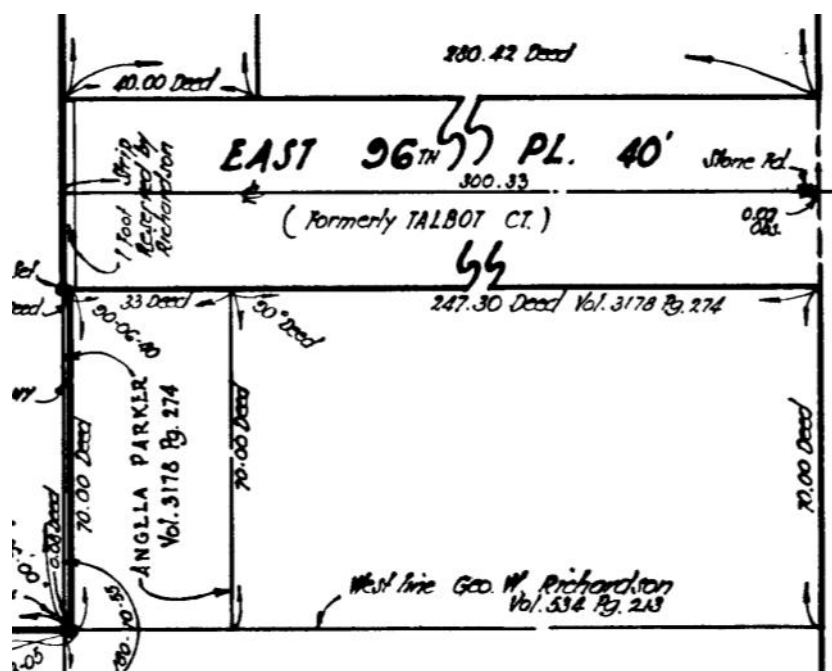
Disc 2 of Scanned Surveys

At the end of 2004, about 2,700 folded surveys were scanned using proceeds from the 2004 Annual Conference the Cleveland Chapter hosted. These surveys vary in size and also include unrecorded subdivision and county road records.

Available only to PLSO Members.

[Proceeds from donation amounts for these Survey Discs go to the chapter's scholarships.](#)

Questions or want to obtain the discs?
Call or email [Robert Hoy](#) 216-389-7677



G.I.S. Layers

By Joshua Appleman, GISP
josh@gatherco.com

Ohio Utilities Protection Service

In this month's edition of **GIS layers** will cover the Ohio Utilities Protection Service, commonly known by surveyors as "O.U.P.S.". Established in 1972, O.U.P.S. is a non-profit organization that serves as a communication link between utility companies and individuals planning any type of digging activities. O.U.P.S. is not a utility locating company nor do they physically mark lines. All digging activities get relayed to O.U.P.S. network of members. These members include cable television, natural gas, electrical, water, sewer and telecommunication companies.



By law, everyone must contact O.U.P.S. at least 48 hours but no more than 10 working days before beginning any digging or excavation work.

O.U.P.S. currently has over 1,100 members.

O.U.P.S. processes an immense amount of data related to digging activities throughout Ohio. In 2010 alone, O.U.P.S. has already had a call volume of 88,317 according to their website "STATS" page. In short, O.U.P.S. works as follows: A homeowner, excavator or contractor calls O.U.P.S.. An O.U.P.S. customer service representative collects detailed information about the digging activity including spatial data such as address, nearest intersection, city, town, etc.

In turn, O.U.P.S. customer service representatives notify members who own and operate facilities in that area. Customer service representatives also

notify the caller of any Limited Basis Participant (LBP) members that they need to contact on their own.

Member representatives have 48 hours to locate and mark underground facilities. A member marks a location with colored flags or paint to identify the type of underground service.

Red- Electric power lines, cables, conduit and lighting cables

Yellow- Gas, oil, petroleum or gaseous material

Orange- Communication, alarm or signals, cables or conduit

Blue- Potable Water

Purple- Reclaimed water, irrigation and slurry lines

Green- Sewers and drain lines

Pink- Temporary survey markings

White- Proposed excavation

Working with such a large geographical area in Ohio, one can see how a Geographical Information System (GIS) could play a vital role in the service provided by O.U.P.S.. In fact, O.U.P.S. has been mapping the state in-house for years and has a dedicated mapping team. Originally the state was mapped using USGS 7.5-minute quadrangle maps. As better data became available, the state was remapped using DOQQ's then aerial photography and whatever the counties are able to provide to O.U.P.S.. O.U.P.S. has utilized Ohio's Location Based Response System (LBRS) GIS data to improve their maps.

With the introduction of LBRS, GIS base data continues to improve. O.U.P.S. serves out their map books conveniently located on their website. These maps include

[\(Cont'd on Page 19\)](#)



Joshua Appleman
GISP

2011 Conference Committee

Chairman

John G. Hoy

jhoy.7419@att.net

Program

Robert Hoy

k666@cox.net

Exhibits

John Bischof

bischof@cvelimited.com

Facility

Ken Hejduk

kenh@hca-es.com

Benefit/Auction

Michael Straub

mikes@straubsurveying.com

Registration

George Hofmann

george_hm@ameritech.net

Hospitality

Timothy Feller

timf@mcsteen.com

G.I.S. Layers [\(Continued from Page 18\)](#)

centerline and boundary data for each of the 88 counties in Ohio. The maps can be accessed and downloaded by clicking on the preferred county of interest.



[Cleveland Surveying News - April 2010](#)

O.U.P.S. also offers **WebTMS**, which is a windows executable program that allows member facility owners to easily access, manage store, search and archive tickets. As tickets come in from O.U.P.S. they can be viewed, assigned or posted. Members can log into the WebTMS system remotely or work offline. Users can import their own facility mapping into the WebTMS system and export notification polygons into their own mapping system. The system supports industry standard GIS data formats. This program alone has proven to streamline ticket processing for facility owners. Lastly, O.U.P.S. offers a ticket search program that is available to members that tracks all tickets received for their specified member code.

A user is able to search historical records of tickets held on their server. Users have the ability to view and or print out the ticket with or without a **map** of the notification area. This program is free to members. This is just another example of how GIS and mapping can streamline complex workflows in the background of large organizations. For more information about O.U.P.S. visit: www.oups.org

2010 Cleveland Chapter Calendar

Apr 1 Seminar Meeting
 Apr 9 State Executive Committee Meeting
 Apr 19 **Executive Committee Meeting**
 Apr 21 Cleveland Surveying News Deadline
 Apr 24-28 ACSM Conference – Phoenix, Az
www.acsm.net/conference
 Apr 28 Cleveland Land Surveyor Deadline

May 6 Seminar Meeting
 May 14 State Executive Committee Meeting
 May 17 **Executive Committee Meeting**
 May 19 Cleveland Surveying News Deadline
 May 26 Cleveland Land Surveyor Deadline

Jun 3 General Membership Meeting
Jun 25 William J. Haas Memorial Annual Golf Tournament

 Jul 9 State Executive Committee Meeting

 Aug 9 **Executive Committee Meeting**
 Aug 11 Cleveland Surveying News Deadline

Sept 2 Seminar Meeting
 Sept 10 State Executive Committee Meeting
 Sept 13 **Executive Committee Meeting**
 Sept 15 Cleveland Surveying News Deadline
 Sept 29 Cleveland Land Surveyor Deadline

Oct 7-9 PLSO Fall Seminar, Sandusky
 Oct 7 State Executive Committee Meeting
Oct 14 Seminar Meeting
 Oct 18 **Executive Committee Meeting**
 Oct 20 Cleveland Surveying News Deadline
 Oct 27 Cleveland Land Surveyor Deadline

Nov 4 Seminar Meeting
 Nov 12 State Executive Committee Meeting
 Nov 15 **Executive Committee Meeting**
 Nov 22 Cleveland Land Surveyor Deadline

 Dec 10 State Executive Committee Meeting (if needed)
 Dec 13 **Executive Committee Meeting** (if needed)

 Jan 14 State Executive Committee Meeting
 Jan 17 **Executive Committee Meeting**
 Jan 19 Cleveland Surveying News Deadline
Jan 27 Annual Meeting

 Feb 7 **Executive Committee Meeting** (if needed)

Executive Committee Meetings:

Parma City Hall at 6 p.m. and are open to all Chapter members who want to attend.