

# Cleveland Surveying News

January 2010



**John J. Bischof  
Cleveland Chapter 2010  
Surveyor of the Year**

- **2010 Chapter Annual Meeting**
- **N.E. Ohio GIS Review Updates**



# Cleveland Chapter of PLSO

**P. O. Box 81713  
Cleveland, OH 44181-0713**

Volume 8, Issue 9 Distribution: 236

Editor: Robert Hoy, P.S.  
Website: Rob Krause, P.S.  
Proof: John G. Hoy, P.S.

## 2010 Advertising Rates:

**Full page:** 9.8"h x 7.3"w \$400 yr.  
**One-half page:** 4.8"h x 7.3"w \$200 yr.  
**One-sixth page:** 3"h x 3.6"w \$80 yr.  
Single Issue Full Page: \$100

Contact: Robert Hoy, [k666@cox.net](mailto:k666@cox.net)

All photographs © Robert Hoy  
unless stated otherwise.

## ----- ADVERTISER INDEX

- 3 [Leica Geosystems](#)
- 7 [Aerocon Photogrammetry](#)
- 8 [City Blueprint of Toledo](#)
- 9 [Roberts Surveying Supplies](#)
- 11 [TGPS](#)
- 14 [Precision Laser & Inst.](#)
- 16 [Jake's Stakes](#)
- 18 [Avatech Solutions](#)
- 19 [Imaginit Technologies](#)

Recalling the motivation for this chapter's existence and the response we've had to date, our motto should be -  
"United we stand, divided we perish."

- William J. Haas, 1974

## Contents

### Features

<a href="#">2010 Surveyor of the Year</a>	17
<a href="#">G.I.S. Updates, Round 2</a>	19

### Meetings

<a href="#">Annual Meeting Announcement</a>	5
<a href="#">Excom. Meeting Highlights</a>	10
<a href="#">December CPD Review</a>	12

### Columns

<a href="#">G.I.S. Layers by Joshua Appleman, GISP</a>	9
<a href="#">Random Lines by John Dailey, P.S.</a>	15

### Reports

<a href="#">President's Message</a>	4
<a href="#">Editor's Notes</a>	4
<a href="#">Delegate</a>	6
<a href="#">Elections</a>	17
<a href="#">Secretary - Excom. Meeting Minutes</a>	21

### Miscellaneous

<a href="#">GIS Users of Northern Ohio</a>	10
<a href="#">Survey Discs</a>	16
<a href="#">Hybrid-GPS Digital Camera</a>	17
<a href="#">Chapter Calendar</a>	20

## 2009 Executive Committee

<b>President</b>	<b>Timothy J. Feller</b>	<b>440-585-9800</b>	<a href="mailto:timf@mcsteen.com">timf@mcsteen.com</a>
President-Elect	Michael A. Straub	440-333-1700	<a href="mailto:mikes@straubsurveying.com">mikes@straubsurveying.com</a>
Past President	Peter D. Zwick	440-235-2729	<a href="mailto:zwick@eng.ohiocoxmail.com">zwick@eng.ohiocoxmail.com</a>
Treasurer	John J. Bischof	440-439-1999	<a href="mailto:bischof@cvelimited.com">bischof@cvelimited.com</a>
Secretary	Michael A. Ackerman	216-642-1130 x115	<a href="mailto:mackerman@dgbassoc.com">mackerman@dgbassoc.com</a>
Delegate	George A. Hofmann	440-234-5544	<a href="mailto:george_hm@ameritech.net">george_hm@ameritech.net</a>
<b>Trustees</b>			
Communication	Robert G. Hoy	216-389-7677	<a href="mailto:k666@cox.net">k666@cox.net</a>
Education	Robert A. Papotto	440-934-7878	<a href="mailto:bobpapotto@wideopenwest.com">bobpapotto@wideopenwest.com</a>
Program	Eric W. Short	440-366-9618	<a href="mailto:shorte@windstream.net">shorte@windstream.net</a>
Membership	Sean T. Snezek	216-970-0752	<a href="mailto:sneezeman21@yahoo.com">sneezeman21@yahoo.com</a>

**Total solutions from the leader in laser scanning**

**Leica ScanStation 2    Leica HDS6000**

**Leica CloudWorx**

**Leica Cyclone II-TOPO**

**With Leica Geosystems' market-leading 3D laser scanning technology, success and profitability are within your reach. Are you scanning yet?**

■ **Industry's most versatile, popular & fast scanners**

ScanStation 2 is the industry's most versatile, popular and fastest scanner for general topographic, as-built and quantity surveys. For close-range as-builts, nothing beats the compact, ultra-fast Leica HDS6000 phase scanner. Cyclone software drives them both.

■ **Comprehensive, efficient software**

Cyclone™ and CAD plug-in CloudWorx™ are industry standards for quickly processing rich laser scan data into any type of deliverable.

■ **Easy-to-learn**

Leica Geosystems newest High-Definition Surveying™ solutions are field-friendly, CAD tech-friendly, and client-friendly ... making it easier for all to profit.

■ **Industry's broadest support resources**

You not only benefit from Leica Geosystems' deeper staff resources, but also from the scanning industry's largest and most active user network.

For more info, visit [www.leica-geosystems.us](http://www.leica-geosystems.us)  
or call 1-866-920-2300 x 2374

- when it has to be right

**Leica**  
Geosystems

[www.PLSO.com](http://www.PLSO.com)



## President's Message

[Cleveland Surveying News - January 2010](#)

What a year! I can honestly say that when I assumed the responsibility of Chapter President one year ago, I didn't have a full appreciation for all the dedicated people I would have the honor of working with. I have been blessed with opportunity to work with some of the most qualified and ambitious trustees and officers.

When you look back on 2009, I sincerely hope that the Cleveland Chapter has helped you with your professional advancement and business development efforts. The Chapter was able to provide members with the opportunity to obtain as many as thirteen hours of Professional Development Credits at our seminar meetings. A special thanks to Eric Short for scheduling speakers and coordinating the logistics for these seminars and to Past President John Dailey for donating his time to conduct a valuable four hour seminar in December.



**Timothy Feller**  
President

Bob Papotto worked diligently all year hammering out the details of a scholarship program which will be up and running this year. I would also like to thank George Hofmann for making many trips to Columbus so we could all stay up to date on the state's business; Mike Ackerman for his excellent record keeping and timely posting of the meeting agenda; John Bischof for his fine and brief treasurer reports; Sean Snezek for his effort in recruiting new members; Bob Hoy for his persistence in getting the information needed to keeping our newsletter the best and for creating the *Cleveland Land Surveyor*; John Hoy for tackling the position of chairman for the 2011 Cleveland Annual Conference, and to Tom Snezek and Rick Ziegman for their dedicated and relentless work in making the golf outing a success. My special thanks to Peter D. Zwick for setting the bar high for Chapter president and encouraging me through my term. With all that said, I wish the best of luck to Mike Straub, the new president for 2010.

We have a few new officers, so what better time to get to know them than at the Annual Chapter Meeting January 28<sup>th</sup> 2010.

[Timothy Feller, P.S.](#)  
Chapter President

## Editor's Notes

This issue bring a close to the 2009 advertising year. Nine issues, containing a minimum of 20 pages, were published exceeding our goal of 8. Photographs gracing the cover ranged from golfers, to jet planes, and from monkey to monument boxes.

TGPS is starting their 2010 advertisement a month early in this issue and I am looking for more new ads. Please forward this to prospective advertisers. *Random Lines* and *GIS Layers* are back this month as promised.

### Monument Boxes

Please keep emailing photos of any "problem" monument boxes noting which street(s) it is on and in which city, village, or township.

Our 2010 Advertising year begins with the March issue.

### 2010 Full Year Advertising Rates:

<b>Full page:</b>	9.8"h x 7.3"w	\$400
<b>1/2 page:</b>	4.5"h x 7.3"w	\$200
<b>1/6 page:</b>	3"h x 3.6"w	\$80
<b>Single Issue Full Page:</b>		\$100

[k666@cox.net](mailto:k666@cox.net)

[www.PLSO.com](http://www.PLSO.com)

## Annual Meeting

Thursday January 28, 2010

Tony K's

841 W. Bagley Road, Berea

[tonyks.com](http://tonyks.com)

Cost: \$23

At the southwest corner of Bagley Road and Poertner Drive, west of Barrett Road

[Click Here](#) for a full map page for the restaurant.

Another year has come and past, bring in the new at our chapter's annual meeting!

Make reservations now to *bring your spouse* for a good time with good people.

- Share your experiences from 2009 and get out of the house during dull January.
- Congratulate 2010 Surveyor of the Year John J. Bischof
- Meet new incoming officers Christopher Tomko and Dino Lustrì

**Reservations (with dinner choice) must be in by Thursday Jan. 21**

Contact: Eric Short 440-366-9618  
[shorte@windstream.net](mailto:shorte@windstream.net)

[Cleveland Surveying News - January 2010](#)



**Eric Short**  
Program Trustee

### Schedule

5:30 Social Hour  
6:30 Dinner  
7:15 Annual Meeting

### Menu Choices

Beef Kebobs- 2 tender beef tenderloin kebobs with green peppers and onion, a Mediterranean specialty; sides include - roasted redskin potatoes, and California Medley (steamed broccoli, cauliflower, and carrots.)

Chicken Parmesan - 2 baked chicken breasts topped with melted marinara sauce and melted mozzarella, served with spaghetti marinara

Crusted Tilapia - baked, flaky tilapia covered in chipotle-lime seasonings, healthy and full of flavor; sides include - rice pilaf and California Medley

Non-Alcoholic drinks are included along with house salad and rolls.



2009

Photo from last year's well attended annual meeting

## Delegate Report

[Cleveland Surveying News - January 2010](#)

### MEETING AGENDA Friday January 8, 2010



#### 4.0 Unfinished Business

- 4.1 Surveyor of the Past Plaques - Barb Jones
- 4.2 Website Proposal - Melinda Gilpin
- 4.3 Soil Scientists Issues - Dean Frederick
- 4.4 Proposed Removal of PS Requirement for County Engineer - Dean Frederick
- 4.5 Statute of Limitations - Rose Coors
- 4.6 2010 Budget - Finance Committee
- 4.7 Announcement of PLSO Officers
- 4.8 Announcement of Member of the Year - Rion Myers
- 4.9 Announcement & approval of Surveyor of the Past - Rion Myers

#### 5.0 New Business

- 5.1 New Members (See Attached List) - Bob Akins
- 5.2 Year-end Chapter and Committee reporting - Melinda Gilpin
- 5.3 Proposed By-Laws change - Dean Frederick

#### 6.0 Inter-Association Delegates

- 6.1 CEO - Dean Ringle
- 6.2 ODOT - Jim Kenyon/Brett Shearer
- 6.3 State Board of Registration - Paul Dinan
- 6.4 OGRIP - Stu Davis

#### 7.0 Committee Reports

- 7.1 Special Committees
  - 7.11 Political Action - Brad Kramer
  - 7.12 Standards - Brad Kramer
    - 7.121 Change in Law Regarding Metes and Bounds
    - 7.122 Monumentation of Railroads
    - 7.123 Preservation of Monumentation
    - 7.124 Minimum Standards for Plat Revision
    - 7.125 GPS Standards - Jim Kenyon
    - 7.126 FEMA Flood Mapping
  - 7.13 State Line - Dean Ringle
  - 7.14 Historic Review - Mike Besch
- 7.2 Newsletter Editor - PLSO Staff
- 7.3 NSPS Governor - Mike Besch
  - 7.31 Trig Star - Paul Dinan
  - 7.32 CST Coordinator - Pat Leonhardt
  - 7.33 Geocaching Coordinator - Bob Akins
- 7.4 Standing Committees
  - 7.41 Program - Bud Payne
    - 7.411 Annual Conference Updates
      - 2009 - Central Ohio - Brad Patridge
      - 2010 - Miami Valley - Brad Kramer
      - 2011 - Cleveland - John Hoy

- 2012 - Central Ohio
- 2013 - Cincinnati and Southwestern
- 7.412 Fall Seminar Updates
  - 2009 - Thomas Hutchins - Dan Susany
  - 2010 - Firelands - Phil Rosebeck
  - 2011 - Tuscarawas Valley - Bob Akins
  - 2012 - Toledo - Pat Leonhardt
- 7.42 Membership - Bob Akins
- 7.421 Membership Brochure Draft
- 7.43 Interprofessional Affairs - A. J. Myers
- 7.44 Education - Dean Frederick
- 7.45 Legislation - Melinda Gilpin
- 7.46 Finance - Paul Dinan
- 7.47 Past Presidents Council - Paul Dinan, et al.
- 7.48 Scholarship - Rion Myers
- 7.49 Scholarship Fund Board - Frank Snyder
- 7.50 Management Review - Dean Frederick

#### 8.0 Chapter Delegate Reports

- 8.1 Askega Chapter - Jim Donathan
- 8.2 Central Ohio Chapter - Brad Patridge
- 8.3 Cincinnati Chapter - Bob Heidkamp
- 8.4 Cleveland Chapter - George Hofmann
- 8.5 Congress Lands Chapter - Isaac King
- 8.6 Firelands Chapter - Tim Riley
- 8.7 Miami Valley Chapter - Ray Payne
- 8.8 Mohican-Killbuck Valley Chapter - Jim Kenyon
- 8.9 Muskingum Valley Chapter - Rob Lowe
- 8.10 Northwest Ohio Chapter -
- 8.11 Ohio State University Student Chapter - Jon Link
- 8.12 Ohio Valley Chapter - Larry Gardner
- 8.13 Scioto Valley Chapter - George Seymour
- 8.14 Southwestern Chapter - Rose Coors
- 8.15 The Thomas Hutchins Chapter - John Francis
- 8.16 The Univ. of Akron Student Chapter - Andrew Kis
- 8.17 Toledo Chapter - Tom Silva - Pat Leonhardt
- 8.18 Treaty Lands Chapter - John Jauert
- 8.19 Tuscarawas Valley Chapter - Dave Bodo
- 8.20 Western Reserve Chapter - Jeff Mallison

#### 9.0 President-Elect's Report - Rion Myers

#### 10.0 PLSO Staff Report - Melinda Gilpin

#### 11.0 President's Report - Dean Frederick

### Executive Committee Meeting - Friday January 8, 2010


Meeting call to order 6:11 P.M.

- 1.4) *No Quorum present.* Motion will be e-mailed to voting members
- 2.0) Secretary's minutes No minutes were available, minutes past due are Sept 2008, January, 2009 and November, 2009.
- 3.0) Treasurer's report for Nov. 2009 accepted subject to audit.
- 4.2) Website, should be up and running next week. One-third of cost paid remainder to be carried over to 2010 budget.
- 4.3 Soil Scientist Issue. Still pursuing,
- 4.6) Budget for Jan. 1, 2010 to June 30<sup>th</sup>, 2010. All in attendance gave favorable support. Budget for July 1, 2010 to June 30, 2011. All in attendance gave favorable support.
- 4.6) 2010 PLSO Officers. President: Rion Myers, President Elect: Brett Tieben, Secretary: Don Pickenpau, Treasurer: Dana Parsell, NSPS Governor: Mike Besch, Immediate Past Pres.: Dean Frederick.
- 4.71) Motion to destroy ballots.
- 4.9) Surveyor of the Past (Myron Jones)
- 5.1) New Members, Motion to accept 2 professional, 2 associates, 1 affiliate, 2 student, 2 reinstatement,

[\(Continued on Page 7\)](#)

[www.PLSO.com](http://www.PLSO.com)





**AEROCON**

**Aerocon Photogrammetric Services Inc**  
Dedicated to providing quality photogrammetric services since 1967

- **Aerial Photography**
- **Digital Orthophotography**
- **Digital Topographic Mapping**
- **Analytical Triangulation**
- **DTM/DEM Surface Generation**
- **LIDAR**
- **Airborne GPS**
- **GIS Services**
- **Volumetric Inventories**

4515 Glenbrook Road  
Willoughby, OH 44094-8215  
440.946.6277  
440.946.2646 Fax  
e-mail: [skymap@aerocon.com](mailto:skymap@aerocon.com)  
[www.aerocon.com](http://www.aerocon.com)

The globe graphic features the following labels on its segments: AERIAL PHOTOGRAPHY, GPS, AIRBORNE GPS, EST. 1967, DTM/TIN, PLANIMETRICS, LIDAR, and VOLUMES.

## Delegate Report [\(Continued from Page 6\)](#)

1 Life (George Warnke).

5.2) Year end Chapter and Committee Reports due by Jan. 18<sup>th</sup>, Treasurers report due by Jan. 31.

5.3) Motion to accept By-Law VIII-Definitions, Motion to accept change in fiscal to July 1 – June 30, Motion to change language for Scholarship Committee. Scholarship to be administered by the Columbus Foundation

5.4) Trumbull County Tax Maps. John N. Francis P.S. , Thomas Hutchins Chapter brought to the Boards attention that it appears that the County Engineer is not overseeing the Tax Map Dept. , that deeds and plats are being reviewed by the county GIS department. The board determined that this would warrant further investigation to determine how to proceed.

6.3) State Board of Registration: Oct. Test, Fundamentals, 20 students took exam, 16 passed, professional 33 took exam, 16 passed.

7.11) Political Action: Funds remain at \$2,884.85.

7.31) Tri Star : Looking for annual donations for 2010. Large chapters are asked to consider \$75 and small chapters \$25. Due April 2010. Please notify Melinda Gilpin if chapter will be setting up the program with any schools.

7.32) CST : Will be offered at the annual conference. Friday Feb. 12<sup>th</sup>. Application to take exam must be received one month prior. Jan 12th.

7.411) 2009 Annual Conference Income \$134,764, Expense \$107,038, Profit \$27,726.

2008 Fall Seminar: Income \$67,738, Expense 28,167, Profit \$39,570

2009 Fall Seminar: Income \$57,401, Expense 20,916, Profit \$36,485

9.0 - 11.0) Reports gave no further comments

Adjourned 9:20PM

Respectfully submitted, George A. Hofmann



Your  
Complete  
Source



Sales • Service • Rental • Leasing • Training • Support

 **Trimble**



**SOKKIA**



**SCHONSTEDT**  
INSTRUMENT COMPANY

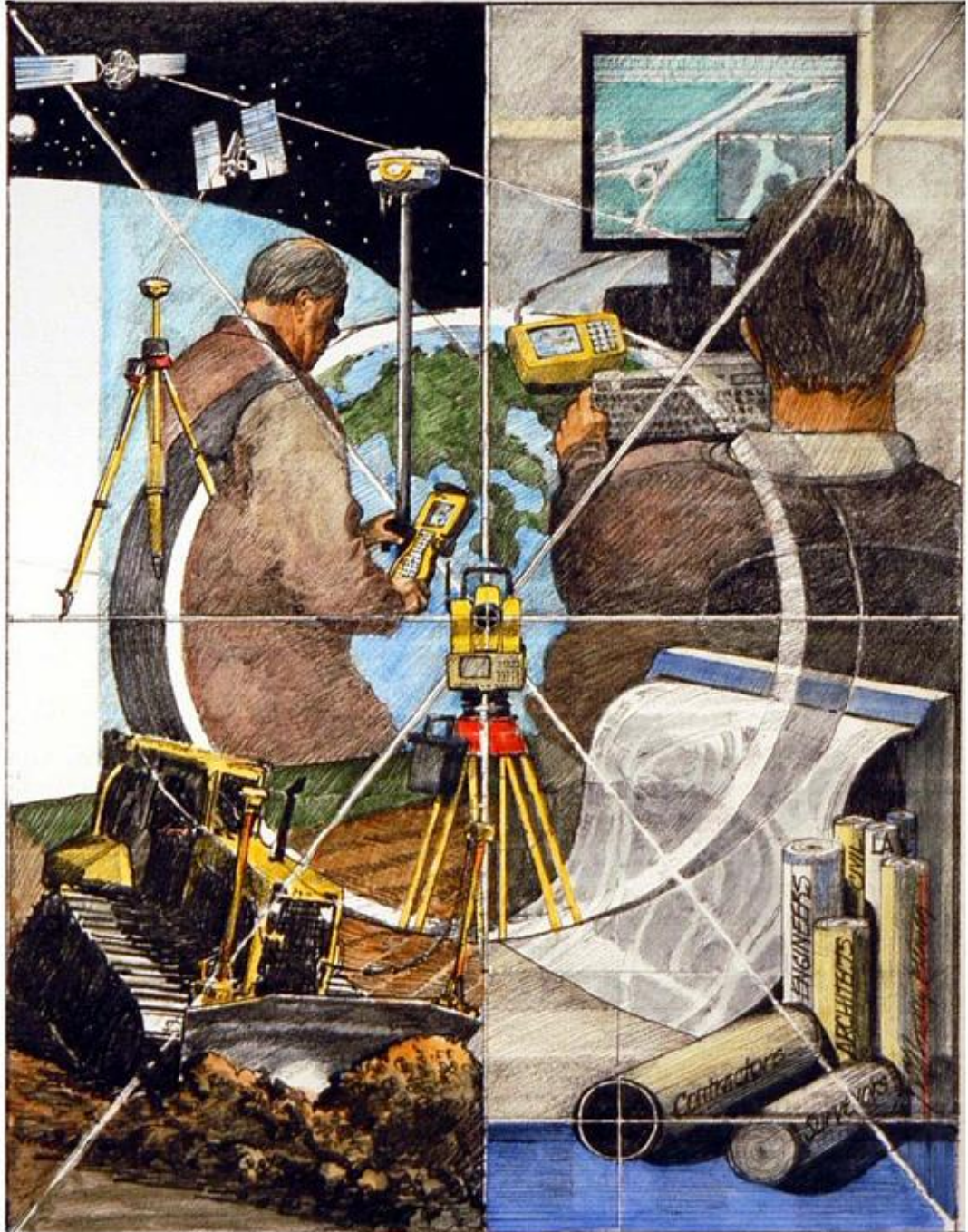
**Lufkin®**

**CRAIN®**



**ROLATAPE®**  
CORPORATION

**CST**



2010 Madison Avenue - Toledo, OH 43604

Tel: (419) 243-7271 Fax: (419) 243-6418 Toll Free: 800-548-1503

E-Mail: [cbt@cityblueprintoftoledo.com](mailto:cbt@cityblueprintoftoledo.com)

[www.PLSO.com](http://www.PLSO.com)



## G.I.S. Layers

By Joshua Appleman, GISP  
[josh@gatherco.com](mailto:josh@gatherco.com)

### Now is the Time to Use GPS to Complete Work More Efficiently and With Less Overhead

As local and state governmental agencies and organizations continue to struggle with tight budgets and the lingering economic downturn, *now* is actually an ideal time to look at tools that can help complete work more efficiently and with less overhead. This month we will briefly review Global Positioning Systems (GPS) in the context of justifying investing GPS despite the economy.

GPS is now an essential tool for Public Land Surveyors and Geographical Information System Professionals. Now, more than ever, private companies and government agencies are using GPS for their field surveying and other applications for precise positioning.

Although cost is normally a limiting factor when considering non-conventional tools for surveying, GPS can offer several immediate benefits for Public

### Cleveland Surveying News - January 2010

Land Surveyors. One obvious benefit is the ability to collect "survey-grade" data very quickly. Secondly, with GPS, surveyors can create geo-referenced data that can be collected allowing for seamless integration into a Geographical Information System (GIS) that can provide an extremely accurate digital map with valuable elevation data.



**Joshua Appleman**  
GISP

In less than a decade, GPS has been rapidly evolving with the introduction of local and state-wide RTK networks. Fortunately, the State of Ohio has a comprehensive state-wide RTK network that can be used with both GIS and Surveying GPS equipment. Equipped with cellular phones, field crews can routinely receive corrections from these networks. As a result, surveyors are performing centimeter-level accuracy RTK surveys with a single GPS rover. Once GPS and GIS solutions are adopted, it is important for surveyors to stay current with [\(Cont'd on Page 10\)](#)

## HIGH GRADE HARDWOOD SURVEY STAKES

### DELIVERY AVAILABLE

- TOPCON DEALER
- SOKKIA DEALER
- FIELD SUPPLIES
- INSTRUMENT SALES, SERVICE & RENTAL
- GPS TECHNOLOGIES
- FIELD EQUIPMENT



# ROBERTS

## *Surveying Supplies*

[WWW.ROBERTSSURVEYING.COM](http://WWW.ROBERTSSURVEYING.COM)

5758 Ridge Road Parma, Ohio 44129

Phone (440) 842-2218

Fax (440) 842-0802

## **G.I.S. Layers** *(Continued from Page 9)*

[Cleveland Surveying News - January 2010](#)

technology as it evolves and often time over time. This is essential in order keep in front of the technology and to reap all of its benefits.

So, where does one go from here? We have a very powerful technology in our hands. And while GPS and the affiliated tools and software programs are collectively complex, and require a commitment to understanding and keeping pace with advancements, making the investment in learning how to use GPS and keeping pace with the industry will ultimately trump the concern for cost as this technology will unquestionably produce a positive ROI over the long-term.

The Professional Land Surveyors of Ohio, Inc. 2010 Annual Conference is approaching on February 11 - 13, 2010 at the Hilton Netherlands Plaza Hotel in Cincinnati, Ohio. Surveyors will have an opportunity to learn more about GPS and review of the latest equipment available from multiple vendors. And lastly, another upcoming event to learn more about GIS is the Ohio Chapter of URISA; their next meeting will be held on January 28<sup>th</sup>, 2010, 11:00am at the ODOT Headquarters at 1980 W. Broad Street, Columbus, Ohio.

## **GIS Users of Northern Ohio**

Is an informal group that promotes geographic data sharing, encourages data standardization, and provides a network for the exchange of technical information between all **GIS** users.

<http://www.lakecountyohio.gov/guono>

Group meets every other month, but January's meeting was canceled due to weather and rescheduled for February.

Upcoming meeting dates & topic (see website for details):

February 11: City of Hudson

March: Cleveland Metroparks GIS

## **Executive Committee Meeting Highlights**

**January 11, 2010**

**Parma City Hall.**

In attendance: John Dailey, Jack Hoy, John Hoy, Sean Boland, Chris Tomko, Dino Lustri, and all officers except Eric Short and Robert Papotto.

**Chapter Delegate:** George Hofmann highlighted the January Executive Meeting from Columbus. The meeting did not have quorum as a result of bad weather. Those present, proceeded with the meeting. Motions were sent via email to committee members for voting. (See report)

### **Communication:**

Issue number 2c of the Cleveland Land Surveyor was sent in December.

### **Education:**

The website will be updated to include the scholarship information.

### **Membership:**

Sean Snezek gave an update on membership and reviewed the potential drop list.

### **Old Business:**

John Hoy stated a contract has been signed with The Intercontinental Hotel for the 2011 Conference in Cleveland.

### **New Business:**

John Dailey suggested nominations for Surveyor of the Past. Tim Feller said he would follow up with the list for next year.

Effects as a result of counties eliminating tax map departments were discussed.



**Michael Ackerman**  
Secretary





**TGPS**

TERRESTRIAL & GLOBAL POSITIONING SOLUTIONS

ALEX CHERCHIAN  
SURVEY SALES / SUPPORT / TRAINING

NEW ALBANY, OH 43054  
CELL: (614) 264-6722  
FAX: (614) 707-5041  
ALEX@TGPS.US.COM

Serving Northern Ohio as an  
Authorized Distributor for

**Leica**  
Geosystems

## **Trade up to a New Leica Viva GNSS System!!**

Trade in your existing dual-frequency receivers for the new **Leica Viva GNSS RTK Rover System**. Leica Geosystems will accept trade-ins of any used dual frequency GNSS receiver in working condition, from any manufacturer, in exchange for a trade in allowance of \$7,600.00 USD towards the purchase of any Leica Viva GNSS system. The program starts December 1, 2009, and continues through March 31, 2010.

### **Leica Viva GNSS**

Your Vision: a Versatile GNSS System

Leica Viva GNSS is a complete range of versatile GNSS solutions for you. From completely integrated, to totally modular solutions; Viva GNSS provides a system to master all of your tasks.



**GS15 GNSS System**

### **Data Collection**



**CS10**



**CS15**

### **Leica Viva TPS**

Your Vision: a Fast Total Station!

Leica Viva TPS is the fastest total station in its class. With a complete portfolio of models, best-in-class one-person surveying, unmatched EDM performance and new levels of ease-of-use, you'll always find your ideal total station.



**TPS1200+ Robotic System**

- when it has to be **right**

**Leica**  
Geosystems

**CPD Seminar Review**

December 5, 2009

**Small Business Management & Historical U.S. Migration Routes**

presented by John E. Dailey, P.S.



**Peter D. Zwick**  
Past President

Twenty-eight PLSO members earned four CPD hours by attending yet another of John Dailey's professional-quality seminars. One member travelled all the way from Columbus to pick up his last few PDH's for 2009. John graciously made it possible for our Chapter to sponsor this polished seminar at a very attractive cost to our members. Many thanks to the Cuyahoga County Engineer for again making available his Bridge Garage Classroom Facility to PLSO. Those present expressed favorable comments toward this venue, as well as toward the seminar's convenient Saturday morning scheduling.



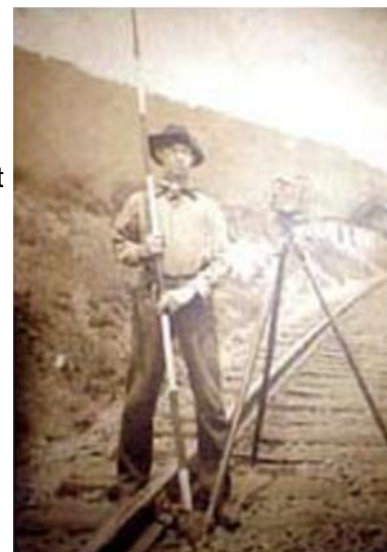
By popular demand, John's program actually consisted of two seminars: his interesting *Historical U.S. Migration Routes* presentation examined the well-known old roads which lead westward from the eastern seaboard throughout our expanding nation. John pointed out that these well-placed roads originated as American Indian trails, then later became military roads, and ultimately became heavily-travelled modern highways such as The Pennsylvania Turnpike, Interstate 90, U.S. Route 30, U.S. Route 40, etc. Of course, migration into the wilderness appealed to many members from lower socio-economic groups because of the opportunity it presented.

The attendees were most interested in local history: Euclid Avenue was the first non-Indian trail to be cut through the forest of the Western Reserve; Pearl Road was once a wooden plank toll road, then later became the first paved (brick) rural road in the U.S.A. (all the way to Albion, Ohio--now Strongsville); Cleveland Hopkins International Airport was the first municipally-owned airport in the world, then later boasted the first paved airfield, then became the first with scheduled nighttime flights, and eventually the first with its

own weather station.

Presumably, John was not yet in the surveying business when the Ohio Highway Administration was established in 1928, but he seems to have a wealth of knowledge of the 1920s roadway system (or lack of good roads). John pointed out that before the days of automobile traffic, there were no paved roads between principal cities! Instead, railroads and interurban light rail were the preferred mode of transportation.

According to John, on July 4<sup>th</sup>, 1796 the fifty-three surveyors and one woman with Moses Cleaveland's first survey crew, celebrated the first "tailgate party" in the Western Reserve with "strong drink and many toasts." One year later, however, they engaged in the first labor dispute over poor pay, bad food and difficult working conditions. John explained that Cleaveland solved the problem by offering them discounted land in appropriately-named Euclid Township. John reminded us that their survey accuracy was adequate for their original subdivision work "on the order of



[\(Continued on Page 13\)](#)



twenty yards or so.” John remarked that each of the crew carried a musket to fend off Indians and wild animals. The natives resented the surveyors, and especially hated their magnetic compass, which they referred to as “the thing that steals Indian lands.”

**“Damn right it’s going to be tough for six more months, but we have been through this before!”**

was John’s message to all surveyors, not just to those working in the private sector. The second seminar of the day, *Small Business Management*, contained a wealth of his advice, accompanied by sixteen pages of handouts. All the professional surveyors in the room listened carefully to Dailey’s wise words regarding previous business cycles and his predictions for the future. Of course, his remarks were couched in historical perspective: The Great Land Panic of 1806, the Great Depression, pent-up demand after the early 1970’s recession, etc.

John predicts that surveyors will be called upon to perform “three to six months in advance of the general sector.” In the meantime, he advises to spend your time now analyzing your niche, marketing, and honing your business operations. John reminds us that surveying is a business that renders a service which only licensed individuals can provide, and that we should do so in a consistently professional manner. John feels that “service is more important than fees,” however, John also says “Collect the fee, collect the fee, collect the fee.”

John wrote in his handout:

“How you perceive yourself is almost as important as the services you provide. If you project the image of a subservient worker, then you will be treated that way. Don’t be cocky about it, but be proud of who you are, the profession you represent, and the services you provide.

“...The American Congress on Surveying and Mapping (ACSM) commissioned a public opinion poll about the image of the American surveyor...Several thousand people were contacted in the course of this study, including engineers, architects, builders, attorneys, title people, the general public, and surveyors. Of all the people questioned, the people with the lowest opinion of the surveyor *were the surveyors!* Everyone else felt that the surveyor was a professional who provides an important service. The American surveyor has a self-image problem.”

Surely we should take it upon ourselves to correct this situation, and it should be one of the PLSO’s primary objectives.

Everybody knows that written contracts are a necessity, that the final invoice should accompany the Final Plat, that no one likes to be forced to pursue collections, and that we all should refuse to sign most client-generated certificates; but, John reminded us just in case.

Dailey’s last words: “If you have a choice between being good, or being lucky, take lucky.”



Cuyahoga Cty. Engineer's  
classroom facility

Photo © John G. Hoy



# Precision Laser & Instrument, Inc.

WWW.LASERINST.COM



**24 Month 0% Interest  
Financing Available**



**CLEVELAND  
888-714-GPS3  
CINCINNATI  
888-714-GPS2  
COLUMBUS  
800-714-GPS1  
PITTSBURGH  
724-266-1600**



## Random Lines

by John E. Dailey, P.S.

Here we are at the beginning of another society year and the beginning of the Michael Straub Presidency. We thank all the officers that have served this Chapter so well in the past and look forward to the future of the Chapter.

There are challenges facing this Society, this Chapter and our Profession that must be addressed effectively and intelligently. We are still mired in the depths of the deepest recession since the "Great Depression" of the 1930's but there is a possibility that we may have turned a corner. We still have a long way to go to come back to financial stability. We as a nation (or a World) did not get to this point overnight and we will not recover from this downturn overnight either.

The best we can do right now is hang in there and to prepare for the future. That is tough to do while we are treading water and trying to keep from drowning. We have to prepare now for what is coming. Learn something new, expand your business capabilities, learn a new skill. Get out there and do your marketing. Do not sit in your office (home) and wait for something to happen. Work at it.

Now for a gear shift and a move into history. As you know, I love books. One of my favorite authors is George Condon, a longtime columnist for the Cleveland Plain Dealer. He recently wrote a book called "West Of The Cuyahoga" that details the settlement and growth of the west side of Cleveland. This book is readily available in most book stores.

Condon wrote a chapter on, of all things, libraries and schools, subjects of deep concern now in 2010. He wrote about the first of the Cleveland Public Library's branches, the West Side Branch, that was first located on the second floor of a building opposite the West Side Market in 1892.

The idea of opening a library branch in this area had some detractors who felt that libraries should be intellectual institutions for the use of scholars and the "gentry." They saw no use for universal literacy. In spite of these people (or to spite them) the West Side Branch was opened. It started with about 5000 books but by the end of the first year

[Cleveland Surveying News - January 2010](#)

this number had risen to 72,000 books.

It quickly outgrew its facility and in 1898 moved to a new location on Franklin Street. They had hardly settled in when in 1901, a Pittsburgh industrialist named Andrew Carnegie decided to fund seven branch libraries for the Cleveland community. The West Side Branch was an immediate benefactor from this donation and the library purchased a triangular parcel of land opposite St. Patrick's Church on Bridge Avenue for \$29,000. In honor of his donation, the branch was renamed the "Carnegie West Branch." A new brick and terra cotta building was built and dedicated in May, 1910 and remodeled in 1979.

The Cleveland Public Library system grew into one of the best in the country and, until just recently, it was the largest lending library in the country. So much for the people that felt that literacy for the masses was a waste.

There is a great deal of discussion now about the closing of several Cleveland Public schools due to changing demographics and falling enrollment. This is the same dilemma facing the Cleveland Catholic Diocese in the closing of inner city schools and churches. There is a general agreement that schools and churches are the glues that hold neighborhoods together, but when the neighborhoods disintegrate, there is no real need for that glue. Many of the arguments about any closing are more emotional than realistic. The closing of these schools and churches are not easy decisions, but somewhere along the line, those tough decisions must be made. It is sad, but a fact of life.

All we can do is to support the people that have to make those tough decisions and hope and pray that they have made the correct ones.

[John E. Dailey](#), Past



**John E. Dailey**

**Survey Discs****Disc 1 \$100****Disc 2 (1 DVD or 4 CDs) \$25**Disc 1 of Scanned Surveys

Approximately 7,000 larger surveys (stored in flat files) were scanned in 1999 in part for preservation because the document storage location at the time was not very well protected against weather extremes.

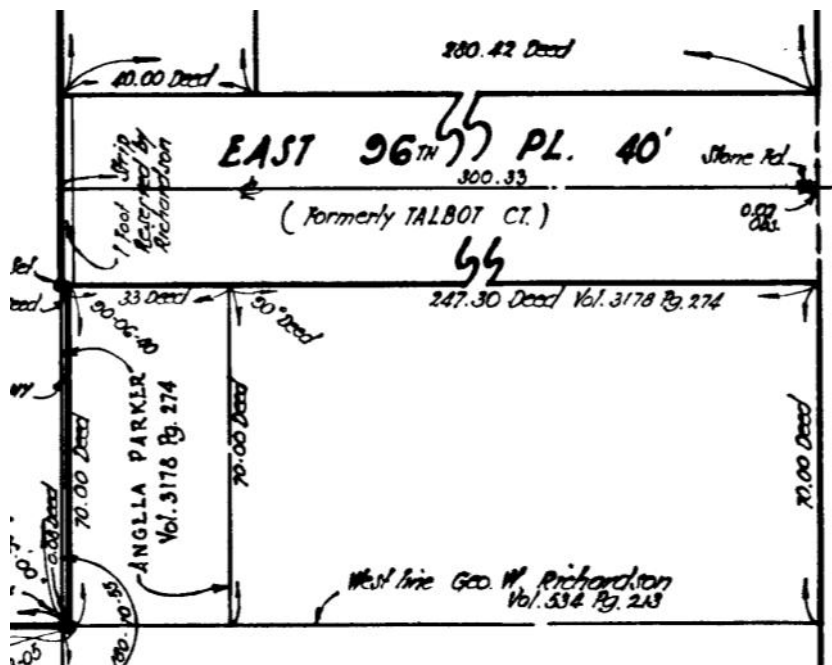
Disc 2 of Scanned Surveys

At the end of 2004, about 2,700 folded surveys were scanned using proceeds from the 2004 Annual Conference the Cleveland Chapter hosted. These surveys vary in size and also include unrecorded subdivision and county road records.

Available only to PLSO Members.

Proceeds from donation amounts for these Survey Discs go to the chapter's scholarships.

Questions or want to obtain the discs?  
Call or email [Robert Hoy](mailto:Robert.Hoy@PLSO.com) 216-389-7677



# Jake's Stakes

**AMISH MADE**

7370 Camp Road Homerville, Ohio

**SURVEYING and CONSTRUCTION STAKES**

**High quality, light colored, HARDWOOD and smooth**

**MARKER STAKES**

Bundle of 50	
18" x 1 5/8" x 1/2"	\$0.18 ea
24" x 1 5/8" x 1/2"	\$0.20 ea
30" x 1 5/8" x 1/2"	\$0.25 ea
36" x 1 1/2" x 7/16"	\$0.28 ea
48" x 1 1/2" x 7/16"	\$0.36 ea
48" x 7/8" x 1/2"	\$0.24 ea

**SQUARE HUBS**

Bundle of 25	
12" x 2" x 2"	\$0.24 ea
18" x 2" x 2"	\$0.32 ea
22" x 2" x 2"	\$0.36 ea

**WEDGES HUBS**

Bundle of 50	
22" HUB MARKER	\$0.13 ea/Bundle of 100
9"	\$0.13 ea
12"	\$0.15 ea

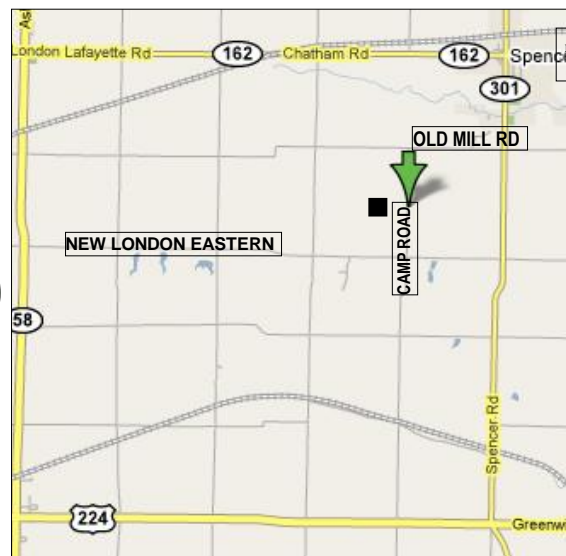
**METAL REBAR RODS**

30" x 5/8" 20 per bundle Call for \$

■ ■ ■ ■ ■  
**NO ORDER TOO  
 SMALL or TOO  
 FAR  
 LARGE INVENTORY**  
 ■ ■ ■ ■ ■

**ORDERS FILLED  
 RAPIDLY!**

**FREE DELIVERY ON  
 LARGE ORDERS**



**IF WE DON'T HAVE IT - WE MAKE IT!**

**DELIVERY AVAILABLE: CALL Dwight at Spencer Feed & Supply 330-421-2596**

**\* WE DELIVER ANYWHERE \* WE DELIVER ANYWHERE \* WE DELIVER ANYWHERE \***

## Elections Results

Chapter officers for 2010, who will be sworn in at the [Annual Meeting](#), are:

President:	Michael A. Straub
President-Elect:	Dino Lustri
Past President:	Timothy J. Feller
Treasurer:	John J. Bischof
Secretary:	Michael A. Ackerman
Delegate:	George A. Hofmann
Trustee:	Robert G. Hoy
Trustee:	Eric W. Short
Trustee:	Sean T. Snezek
Trustee:	Christopher J. Tomko



**Michael A. Straub**  
President-Elect

## GPS Innovation

Casio has displayed a prototype compact digital GPS camera that senses its 3-dimensional movements after losing satellite signals. Gyroscopes are not new to surveying, but this is an interesting product and implementation.

Click on the following link for a roughly translated info page: [Hybrid-GPS compact digital camera](#)

## 2010 Surveyor of the Year

### John J. Bischof, P.S.

Mr. Bischof has been employed in our profession for more than thirty years and been licensed for the past fifteen years. He is currently employed as Chief Surveyor for Chagrin Valley Engineering, Limited. John has worked for the Western Reserve Engineering and Surveying Company, Seifert and Associates, Wade Trim, Inc., The City of Westlake and the City of Parma. He has also been member of the Parma Planning Commission for more than fifteen years.

John has been a very active member of the Cleveland Chapter of P.L.S.O. serving as Education Trustee for five years, President-Elect, President, Past President and currently as Chapter Treasurer. John has also served on past P.L.S.O. Annual Conference Committees and currently is serving as Exhibits Chair for the 2011 Annual Conference. John has been married to wife Nancy for 36 years and has two married children and a grandson with another grandson to arrive in April. He and his family have been residents of Parma since 1975.



a



# Autodesk Technology. Avatech Expertise. Better Results.

- Consulting
- Implementation
- Surveying Technologies
- Training and Technical Support
- Software and Custom Development



## Technology for the World You Build

- Increase production without additional staff
- Reduce cost, rework, redundancies, and errors
- Proven results to increase your bottom line

### What can our solutions do for you?

Call our Cleveland office at **877-717-5600** to find out more.



**AVATECH**  
SOLUTIONS®

Altogether Smarter Design.

**Autodesk®**

Authorized Value Added Reseller

[www.avatech.com](http://www.avatech.com)



# CIVIL 3D FOR SURVEYORS

**The training you need from IMAGINiT – The Strength behind the Solution**

**Finally, the survey software and training you've been waiting for.**

Your civil engineering department or the firms you survey for have already switched to Civil 3D. Life would be easier, and your time would be more productive, if you could take advantage of it too. We have the class that will take you through the steps of a typical survey workflow: field to finish – designed by surveyors for surveyors. You will receive a certificate that you may use for Professional Development Hours.

Need AutoCAD Civil 3D or Map 3D software? Need help getting started? We've assisted one-man firms and ENR 100 firms, as well as city and county engineers throughout Ohio. With over 100 engineers, surveyors and Autodesk certified instructors, IMAGINiT delivers valuable training and implementation programs designed to empower your team.

**Contact Kristen Hannan or Len Horowitz to get started.**



TECHNOLOGIES

A RAND Worldwide Company

*The largest ATC provider in North America*





Authorized Training Center

**www.rand.com/imaginitt • Cleveland office: 216-834-8300**

Training . Implementation . Software Development . Consulting . Data & Document Management . Asset Management . Design Visualization . Support

## G. I. S. Updates, Round 2

### Lorain County

Lorain's GIS was reviewed in the: [Jan 2009 CSN](#) and the GIS can be entered through: [www.loraincountyauditor.com/auditormap/Default.aspx](http://www.loraincountyauditor.com/auditormap/Default.aspx)

From [Marty Rowe](#), GISP - Lorain County GIS Manager:

*"We are working on the finishing touches of new Lorain County Auditor's Website that will integrate current parcel information with a light version of the GIS website. Users will find the new site to be very intuitive, and user-friendly. Some of the new features include printing maps and property records to pdf files, faster custom data searches, and simplified reports neatly formatted for printing.*



**Robert Hoy**  
CSN Editor

*A new update to the current GIS website is in the works as well and we anticipate a spring 2010 launch. The improved site will have more of the look and feel of commercial map websites common to the internet today, but new GIS technology will enable us to increase speed and stability of the site as well as add new data layers and documents.*

*The two websites will both be hosted within the Auditor's Office and will be updated nightly. Users will actually feel as though they are only visiting a single website as our design team has worked to make all page transitions feel seamless. "*

The Lorain GIS already offers a feature filled presentation, I am glad they want to keep offering more information.

[\(Continued on Page 20\)](#)



## G. I. S. Updates (Cont'd from Page 19) [Cleveland Surveying News - January 2010](#)

### Geauga County

The Geauga County GIS was reviewed in the: [Mar 2009 CSN](#) and the GIS can be entered through: [County Map](#)

The *Downloads* location has moved. They are now found on the *Downloads* tab at this page: [www.auditor.co.geauga.oh.us/gis.aspx](http://www.auditor.co.geauga.oh.us/gis.aspx) Also this page has a *Printable Maps* tab which includes "Historic USGS" which is a low resolution map of Geauga County. Remember that excellent quality, high resolution USGS topo maps are on this website I featured in a past CSN: [www.railsandtrails.com/USGS1900/OH/index.html](http://www.railsandtrails.com/USGS1900/OH/index.html)

### Lake County

The Lake GIS was reviewed in the: [Apr 2009 CSN](#) and the GIS can be entered through: [www.lakegis.org](http://www.lakegis.org) (notice "PLSO Review" on the left side of the page, which is my review).

2009 color Aerial Photography layer has been added.

1951 black and white Aerial Photography layer has been added.

Remember Lake County has aerial photography from 1967 and 1937 that they want to integrate into their GIS when resources become available for that endeavor.

## 2010 Cleveland Chapter Calendar

Jan 28	<b>Annual Meeting</b>	Aug 9 Aug 11	<b>Executive Committee Meeting</b> Cleveland Surveying News Deadline
Feb 10	Cleveland Surveying News Deadline	Sept 2	<b>Seminar Meeting</b>
Feb 11-13	PLSO Annual Conference, Cincinnati	Sept 10	State Executive Committee Meeting
Mar 4	<b>Seminar Meeting</b>	Sept 13	<b>Executive Committee Meeting</b>
Mar 12	State Executive Committee Meeting	Sept 15	Cleveland Surveying News Deadline
Mar 15	<b>Executive Committee Meeting</b>	Sept 29	Cleveland Land Surveyor Deadline
Mar 17	Cleveland Surveying News Deadline	Oct 7	<b>Seminar Meeting</b>
Mar 24	Cleveland Land Surveyor Deadline	Oct 7-9	PLSO Fall Seminar, Sandusky
Apr 1	<b>Seminar Meeting</b>	Oct 8	State Executive Committee Meeting
Apr 9	State Executive Committee Meeting	Oct 18	<b>Executive Committee Meeting</b>
Apr 19	<b>Executive Committee Meeting</b>	Oct 20	Cleveland Surveying News Deadline
Apr 21	Cleveland Surveying News Deadline	Oct 27	Cleveland Land Surveyor Deadline
Apr 24-28	ACSM Conference – Phoenix, Az <a href="http://www.acsm.net/conference">www.acsm.net/conference</a>	Nov 4	<b>Seminar Meeting</b>
Apr 28	Cleveland Land Surveyor Deadline	Nov 12	State Executive Committee Meeting
May 6	<b>Seminar Meeting</b>	Nov 15	<b>Executive Committee Meeting</b>
May 14	State Executive Committee Meeting	Nov 22	Cleveland Land Surveyor Deadline
May 17	<b>Executive Committee Meeting</b>	Dec 10	State Executive Committee Meeting (if needed)
May 19	Cleveland Surveying News Deadline	Dec 13	<b>Executive Committee Meeting</b> (if needed)
May 26	Cleveland Land Surveyor Deadline	Jan 14	State Executive Committee Meeting
Jun 3	<b>General Membership Meeting</b>	Jan 17	<b>Executive Committee Meeting</b>
Jun 25	<b>William J. Haas Memorial Annual Golf Tournament</b>	Jan 19	Cleveland Surveying News Deadline
Jul 9	State Executive Committee Meeting	Jan 27	<b>Annual Meeting</b>



## Executive Committee Meeting Minutes

[Cleveland Surveying News - January 2010](#)

November 16, 2009 Parma City Hall.

In attendance: Jack Hoy, John Hoy, and all officers except Sean Snezek.  
Meeting called to order at 6:06 pm.

Secretary's minutes: Executive Committee meeting minutes from October accepted as revised.

Chapter Delegate: George Hofmann highlighted the November Executive Meeting from Columbus. (See report)

Treasury: John Bischof submitted a written report for October 2009.  
A motion to transfer \$2200 from Education to the Scholarship Fund was approved.

### Communication:

Bob Hoy gave an update on the newsletter content.  
Issue number 2 of the Cleveland Land Surveyor will be sent out this month.

### Education:

Robert Papotto reviewed proposed revisions to the bylaws for a scholarship application approval committee.  
A motion to amend the by-laws reflecting changes for the new scholarship was approved.  
Membership will be notified of the changes in the December newsletter.  
The scholarship application form was approved.

Membership: No report

### Program:

The topic, cost and location for the December CPD was finalized.  
Tim Feller requested a list of seminars from the past year.

### Old Business:

John Hoy updated the status of the 2011 Conference.  
The nominating committee reported on the candidates for the upcoming officer election.  
The 2010 budget was reviewed.

### New Business:

Eric Short discussed the spring seminars.  
Budget revisions were discussed.

Meeting adjourned at 8:07 pm.

Respectfully Submitted,

Michael A. Ackerman



**Michael Ackerman**  
Secretary

## Cleveland Chapter Annual Meeting

January 28th

Tony K's (same as last year)

841 W. Bagley Road

Berea, Ohio 44017

See [Page 4](#) for details