



Having monument box quality problems? See page 3

Cleveland Surveying News

November 2009

- CPD Seminar Nov. 5th,
Alicia A. Silverio , 1.5 PHDs
- 2010 Proposed PLSO Budget
- John Dailey's Free
December Seminar



Cleveland Chapter of PLSO

**P. O. Box 81713
Cleveland, OH 44181-0713**

Volume 8, Issue 7
Circulation: 235 issues

Editor: Robert Hoy, P.S.
Proof: John G. Hoy, P.S.
Website: Rob Krause, P.S.

2010 Advertising Rates:

Full page: 9.8"h x 7.3"w \$400 yr.
One-half page: 4.8"h x 7.3"w \$200 yr.
One-sixth page: 3"h x 3.6"w \$80 yr.
Single Issue Full Page: \$100

Help Wanted or Position Wanted up to
one-half page is \$30.00 per issue.

Contact: Robert Hoy, k666@cox.net

All photographs © Robert Hoy
unless stated otherwise.

Contents

Meetings

November CPD Seminar Announcement	5
December Free Seminar Announcement	7
Excom. Meeting Highlights	16
October CPD Review	22

Columns

Random Lines by John Dailey, P.S.	13
G.I.S. Layers by Joshua Appleman, GISP	19

Reports

Communication	3
President's Message	6
2011 Conference	9
Nominations	10
Editor's Notes	14
Delegate	17
Secretary - Excom. Meeting Minutes	20

Miscellaneous

County Government Election Alert	11
Survey Discs	11
Chapter Calendar	14
2010 Proposed PLSO Budget	21

ADVERTISER INDEX

4	City Blueprint of Toledo	12	Avatech Solutions
6	Roberts Surveying Supplies	13	Imaginit Technologies
8	Precision Laser & Inst.	15	Leica Geosystems
10	Jake's Stakes	18	Aerocon Photogrammetry

2009 Executive Committee

President	Timothy J. Feller	440-585-9800	timf@mcsteen.com
President-Elect	Michael A. Straub	440-333-1700	mikes@straubsurveying.com
Past President	Peter D. Zwick	440-235-2729	zwick@eng.ohiocoxmail.com
Treasurer	John J. Bischof	440-439-1999	bischof@cvelimited.com
Secretary	Michael A. Ackerman	216-642-1130 x115	mackerman@dgbassoc.com
Delegate	George A. Hofmann	440-234-5544	george_hm@ameritech.net
Trustees			
Communication	Robert G. Hoy	216-389-7677	k666@cox.net
Education	Robert A. Papotto	440-934-7878	bobpapotto@wideopenwest.com
Program	Eric W. Short	440-366-9618	shorte@windstream.net
Membership	Sean T. Snezek	216-970-0752	sneezeman21@yahoo.com

Communication Report

[Cleveland Surveying News - November 2009](#)



Robert Hoy
Communication
Trustee

Let's talk about Monument Boxes. Past President Peter D. Zwick volunteered to write an article about the importance of monument boxes for Issue 2 of the **Cleveland Land Surveyor** (cover shown at right) that our Chapter sends to municipality and township building departments. One thing to remember: a monument inside a monument box is no more special than monuments found outside the pavement. The box is merely for protection of the monument. The monument inside the box needs to be accepted or rejected as being a controlling monument by the surveyor.



I performed a survey having recovered centerline R/W pipe monuments, found through Lorain County engineer field books, without evidence it had been uncovered out of the asphalt before. But property monuments did not fit the newly un-asphalted pipes. Another encounter of mine was in Westlake at a semi-major intersection. Inside the monument box I could tell the road had 3 or 4 inches of asphalt added because I could see inside the "old" box rim of the previous pavement surface! The new monument box riser was offset from the lower box rim so a plumb line could not be obtained over the iron pin monument.

My most extreme monument box experience happened in Lorain at the large intersection of E. 28th St. and State Route 57. I was performing a survey of the large steel plant and North-South record property lines were not matching up with mapping from aerial imagery we had flown for our project. The centerline monument was very important, so I went to work digging up asphalt after getting a strong magnetic reading. Two inches down I found the rim of a 10" diameter round monument box. No lid! I spent 6 hours carefully excavating for the stone I found that was 20 inches below the pavement. The stone was 3 feet off of where record had claimed it to be. One thing I've heard that bothers me is that some field crews are being instructed to pass over monument boxes that have been paved over because recovering the monument inside would take too long.

Send me your photos! k666@cox.net

Please send me your digital photos of problem roadway monument boxes, or lack of a monument box.

- paved over
- cracked lid
- no lid
- no monument box
- tarred over (see photo at left)
- box riser offset too far from monument

Let's get an idea what surveyors in our area are encountering. The Cleveland Chapter might send a letter with supporting evidence and photos to city engineering departments about monument boxes. And tell me if any specific cities or townships need education on monument boxes.



Your
Complete
Source



Sales • Service • Rental • Leasing • Training • Support

 **Trimble**



SOKKIA



SCHONSTEDT
INSTRUMENT COMPANY

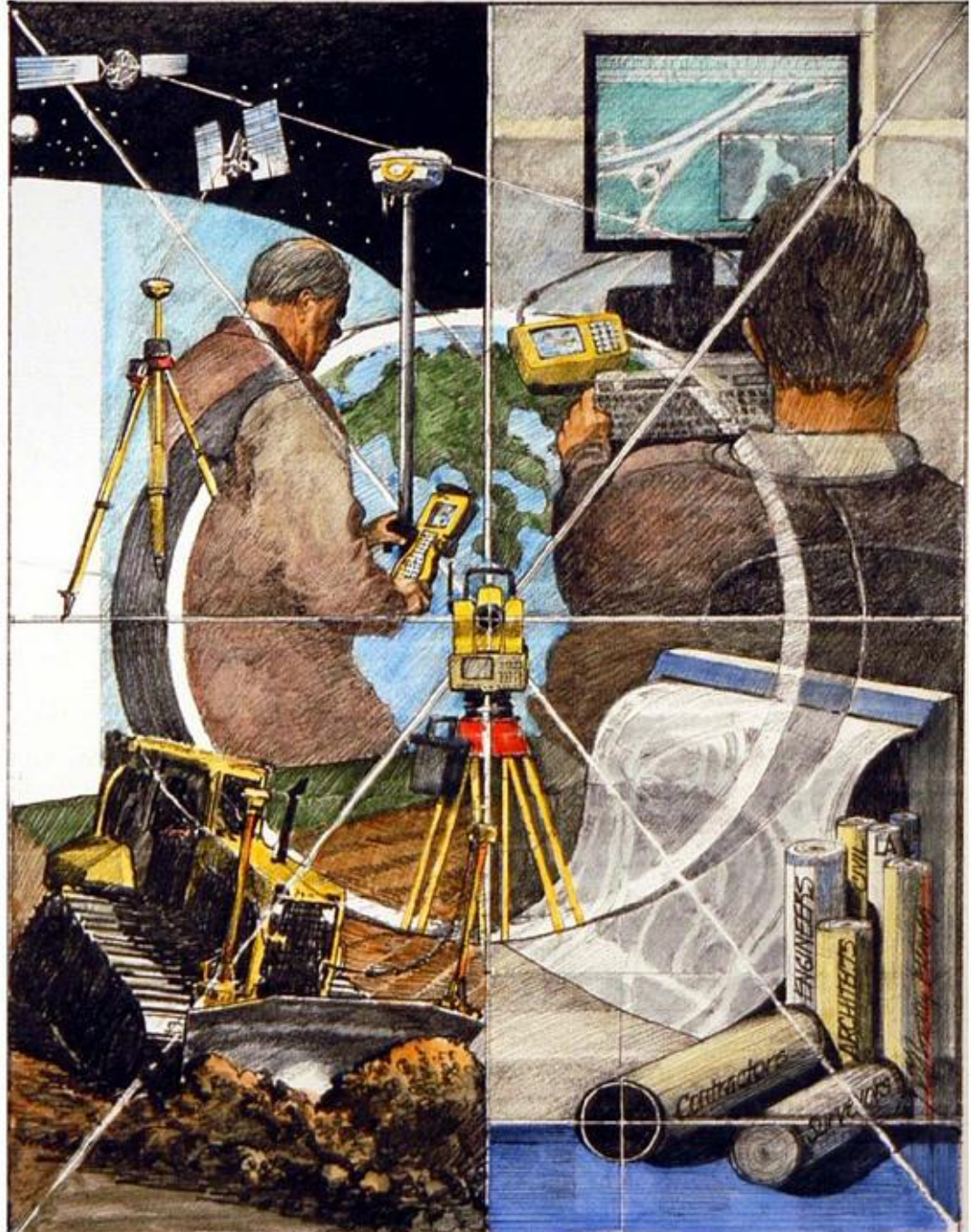
Lufkin®

CRAIN®



ROLATAPE®
CORPORATION

CST



2010 Madison Avenue - Toledo, OH 43604

Tel: (419) 243-7271 Fax: (419) 243-6418 Toll Free: 800-548-1503

E-Mail: cbt@cityblueprintoftoledo.com

November CPD Seminar

Thursday November 5th

Cost: \$35 PLSO Members, \$60 Non-Members

Speaker: Alicia A. Silverio CFM - 1.5 PDHs

Ms. Silverio is a certified floodplain manager with the floodplain management division of Water Resources of the Ohio Department of Natural Resources (ODNR)

Topic: Uses and applications of elevation certificates, and they pertain to lenders and agents. Flood plain regulations.



Eric Short
Program Trustee

Schedule

5:45 Registration & Socializing

6:30 Dinner

7:00 President's comments

7:05 Speaker

Meal: Chicken Marsala

Make Reservations by
Tuesday November 3

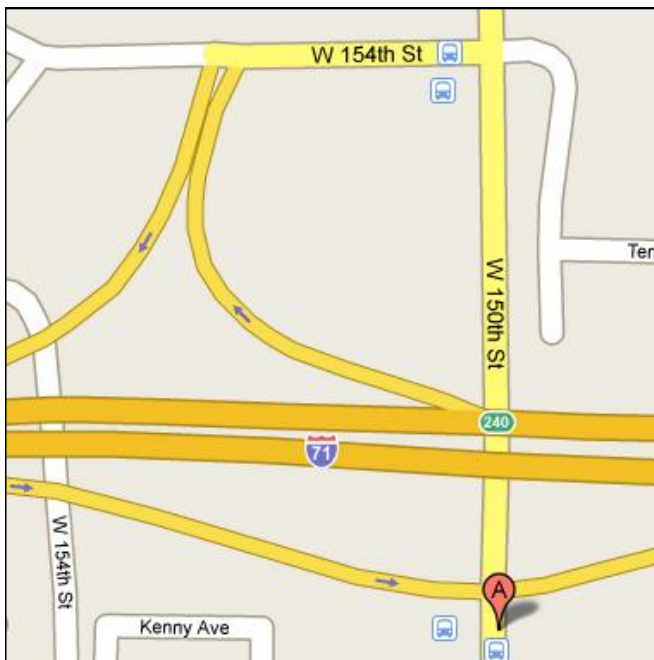
Contact Program Trustee:
Eric Short 440-366-9618
shorte@windstream.net

Marriott Hotel

4277 West 150th St.
Cleveland

FREE PARKING

[Click Here](#) for a full map page to the Marriott.



Need more PDH's this year?

[See Page 7](#) for how to get 4 more



Cleveland
Chapter of PLSO

President's Message

One of my fellow workers enlightened me to the apparent fact that no one uses plumb bobs anymore. I was on the verge of outrage. How possibly could you leave the work truck without one of the most basic surveying tools in existence? A 16 ounce plumb bob with a gammon reel loaded with at least 6 feet of fluorescent orange nylon string and a spare point retained inside the plumb bob cap. It's not possible. How would you give line or take line? How would you tap in a shiny zinc plated surveyors tack in a hardwood hub? Most of all, when nobody is looking, how do you open that monument box lid?



Timothy Feller
President

I did a little spot survey of my chapter peers about their usage of this brass icon of the surveying world. Much to my dismay they mostly sit on desks with some frilly font engraved on them. The plumb bob has always been the most recognizable tool of the surveyor, now it is simply being cast aside as a relic of the past. Next I am afraid the crews will be telling me they don't need a steel tape anymore. Things change and for quite a few people, even me, it is always difficult and often wrought with skepticism. I recall my father relaying his initial acceptance of his first calculator. His doubt was so great that he would verify the calculators' results by using the logarithm books. I still can't free fall and do without hand written field notes, I guess it's my little security blanket.

Now they tell me physical bench marks are no longer necessary due to the accuracy of GPS (Global Positioning System) and the increased density of CORS (Continuously Operating Reference Station), especially in the State of Ohio. Well I guess it is a good thing we keep pushing technology to new levels or is it technology is pushing me to a new level.

[Timothy Feller, P.S.](#)
Chapter President

HIGH GRADE HARDWOOD SURVEY STAKES

DELIVERY AVAILABLE

- TOPCON DEALER
- SOKKIA DEALER
- FIELD SUPPLIES
- INSTRUMENT SALES, SERVICE & RENTAL
- GPS TECHNOLOGIES
- FIELD EQUIPMENT



ROBERTS

Surveying Supplies

WWW.ROBERTSSURVEYING.COM

5758 Ridge Road Parma, Ohio 44129

Phone (440) 842-2218

Fax (440) 842-0802

December Seminar

In an effort to be of more service to our members, the Cleveland Chapter of PLSO will present a FREE four hour seminar for PLSO members.

Date: Saturday December 5th

Time: 8:30a-12:30p, 4 PDH units

Location: Cuyahoga County Engineer's classroom facility

Cost: **Free** to PLSO members

\$165 for non-members (includes 1 year PLSO membership)

Coffee and doughnuts will be provided.

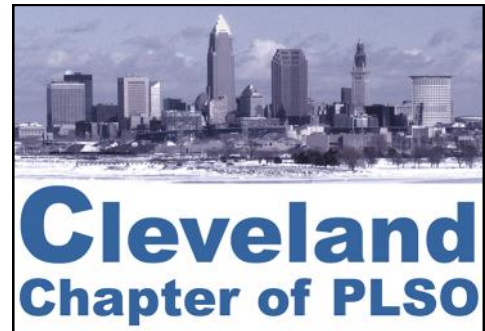
The Seminar will be presented by John E. Dailey, Past President of PLSO and will be on the subjects of:

- Migration Routes and Cleveland & Cuyahoga County History
- Small Business Practices

John has presented seminars for over 20 years in Ohio, Oregon, California and Missouri to surveyors, attorneys, title personnel and engineers. He will share his expertise with you to aid in getting your necessary continuing education credits.



Sponsored by:



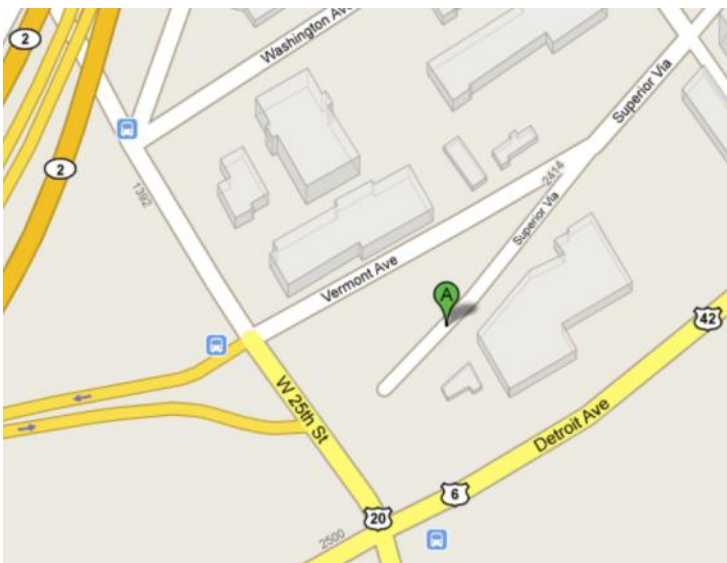
Reservations are **required**, as seating will fill up quickly! Seating limited to 50 persons.

Make Reservations by **Tuesday** December 1

Contact Program Trustee:

Eric Short 440-366-9618

shorte@windstream.net



[Click Here](#) for a full map page to the seminar.

Location:

Cuyahoga County Engineer's Classroom Facility at 2433 Superior Viaduct, Cleveland

free parking with
security camera surveillance



Precision Laser & Instrument, Inc.

WWW.LASERINST.COM



**24 Month 0% Interest
Financing Available**



CLEVELAND
888-714-GPS3
CINCINNATI
888-714-GPS2
COLUMBUS
800-714-GPS1
PITTSBURGH
724-266-1600

2011 Conference Committee Report

A friend of mine grew up in a family of plumbers. Like his father and grandfather he apprenticed in the trade in the early 1970's. He was taught to pack and melt lead for joints and solder connections. In the mid 1970's plastic pipe was introduced. Everyone who was teaching him the business had nothing good to say about the product. In fact they complained that it would fail and cause more headaches than anything ever used for plumbing. He asked his father one evening why everyone was resisting what he thought was a great invention. His father told him that it was because it was new, it was different and it worked.

Switch the words plumber to surveyor and plastic pipe to total stations, data collectors, cad computers or GPS and we can all relate to that story. Change is not easy to accept, but look at where we are today.



John G. Hoy, P.S.
2011 Conference
Chairman

On Thursday, October 15, 2009 a 2011 PLSO Conference Committee meeting was held here in Cleveland. In attendance were representatives of the PLSO Program Committee and Melinda Gilpin, the Executive Director of PLSO. The subject of the meeting was proposed changes by the Cleveland Conference Committee to the format of the Annual Conference. Based on statistics from the last few conferences we suggested several changes that could make the 2011 event a better experience. Convincing everyone was difficult and with some concessions a format was finalized.

In 2011 the conference will start on Wednesday afternoon and conclude Friday evening. The conference will still be primarily a Thursday and Friday event with 10.5 to 12 PDH credits on those days. New for 2011 will be the opportunity for the many different PLSO committees to meet on Wednesday afternoon and an *optional* 3 PDH credit session that evening. Thursday evening the new PLSO Benefit Auction will be held in the exhibit hall (first held in 2009). Friday afternoon one of the sessions after the break will be the PLSO Annual Meeting which will include the agenda from the banquet. A hospitality room will be open Wednesday and Thursday evenings. There will be no banquet event, planned spouse program or Saturday morning sessions in 2011. Many attendees from out of town would usually come into town Wednesday night. 2011 will get them a bang for their buck Wednesday and not require a Friday overnight. Along with the elimination of high cost items this could be a conference with a reasonable registration fee and fewer hotel nights. A win – win in this time of economic recovery.

Planning is moving forward and we are negotiating with our first choice hotel. The schedule includes two professional session tracts, one technical session tract and a CST session tract. If anyone has suggestions for topics please contact the 2011 Program Chair, Robert Hoy.

Conference Committee:

Chairman	John G. Hoy	jhoy.7419@att.net
Program	Robert Hoy	k666@cox.net
Exhibits	John Bischof	bischof@cvelimited.com
Facility	Ken Hejduk	kenh@hca-es.com
Benefit/Auction	Michael Straub	mikes@straubsurveying.com
Registration	Joseph O'Donnell	joeodonnps1@sbcglobal.net
Hospitality	Timothy Feller	timf@mcsteen.com

Officer Nominations

Ballots for 2010 Chapter officers will be mailed by mid-November.

I still need a member to run for President-Elect. This person ideally should have been an officer of the Cleveland Chapter previously, but not necessarily been President before.

If you have a recommendation, please contact me at mikes@straubsurveying.com or **440-333-1700** and I will follow up with that member.

Thanks in advance for your help!

Mike Straub
President-Elect



Michael A. Straub
President-Elect

Jake's Stakes

AMISH MADE

7370 Camp Road Homerville, Ohio

SURVEYING and CONSTRUCTION STAKES

High quality, light colored, HARDWOOD and smooth

MARKER STAKES

Bundle of 50	
18" x 1 5/8" x 1/2"	\$0.18 ea
24" x 1 5/8" x 1/2"	\$0.20 ea
30" x 1 5/8" x 1/2"	\$0.25 ea
36" x 1 1/2" x 7/16"	\$0.28 ea
48" x 1 1/2" x 7/16"	\$0.36 ea
48" x 7/8" x 1/2"	\$0.24 ea

SQUARE HUBS

Bundle of 25	
12" x 2" x 2"	\$0.24 ea
18" x 2" x 2"	\$0.32 ea
22" x 2" x 2"	\$0.36 ea

WEDGES HUBS

Bundle of 50	
22" HUB MARKER	\$0.13 ea/Bundle of 100
9"	\$0.13 ea
12"	\$0.15 ea

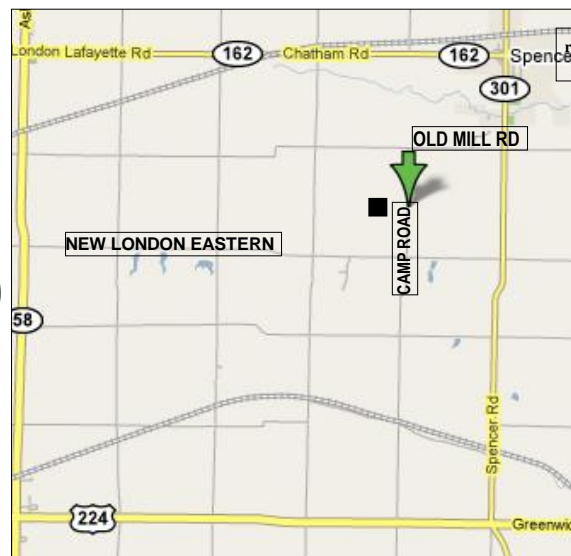
METAL REBAR RODS

30" x 5/8" 20 per bundle Call for \$

■ ■ ■ ■ ■ ■ ■ ■ ■ ■
NO ORDER TOO
SMALL or TOO
FAR
LARGE INVENTORY
 ■ ■ ■ ■ ■ ■ ■ ■ ■ ■

**ORDERS FILLED
RAPIDLY!**

**FREE DELIVERY ON
LARGE ORDERS**



IF WE DON'T HAVE IT - WE MAKE IT!

DELIVERY AVAILABLE : CALL Dwight at Spencer Feed & Supply 330-421-2596

*** WE DELIVER ANYWHERE * WE DELIVER ANYWHERE * WE DELIVER ANYWHERE ***

County Government Election Alert

Nov. 6, 2009

In both Cuyahoga and Summit Counties, ballots will contain questions that ask voters to choose to eliminate the office of County Engineer as a separate *elected* office. The result in both Counties could be that a County Executive will *appoint* the engineer.

In Summit, the County Executive could eliminate the whole office of the County Engineer, with his duties and powers "transferred" to the Executive. In Cuyahoga, the Executive would directly appoint the County Engineer, instead of direct election by the voters. Certainly, these proposals should be voted down. An elected independent County Engineer who is not beholden to one politician will best serve the citizenry.

In Cuyahoga, the County government scandals have overshadowed this issue, so it's up to us individuals to vote against the changes. In Summit, Alan Brubaker P.E., P.S. will lead the campaign against this; and you can contact him at protectyourvote@sbcglobal.net or at (330) 861-6388.



Peter D. Zwick
Past President

Survey Discs

Disc 1 \$100

Disc 2 (1 DVD or 4 CDs) \$25

Disc 1 of Scanned Surveys

Approximately 7,000 larger surveys (stored in flat files) were scanned in 1999 in part for preservation because the document storage location at the time was not very well protected against weather extremes.

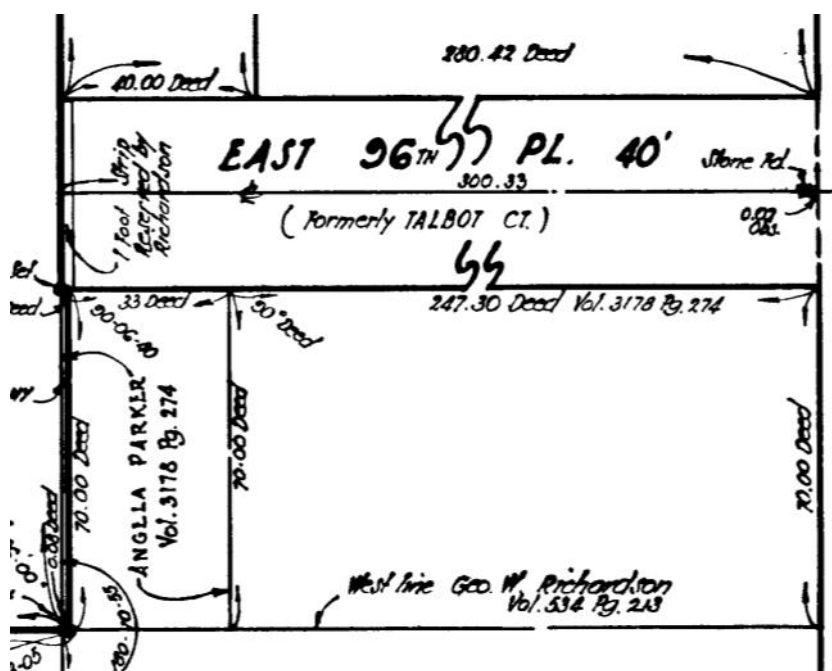
Disc 2 of Scanned Surveys

At the end of 2004, about 2,700 folded surveys were scanned using proceeds from the 2004 Annual Conference the Cleveland Chapter hosted. These surveys vary in size and also include unrecorded subdivision and county road records.

Available to PLSO Members only.

Proceeds from donation amounts for these Survey Discs go to the chapter's scholarships.

Questions or want to obtain the discs?
Call or email [Robert Hoy](mailto:Robert.Hoy@plso.com) 216-389-7677



Autodesk Technology. Avatech Expertise. Better Results.

- Consulting
- Implementation
- Surveying Technologies
- Training and Technical Support
- Software and Custom Development



Technology for the World You Build

- Increase production without additional staff
- Reduce cost, rework, redundancies, and errors
- Proven results to increase your bottom line

What can our solutions do for you?

Call our Cleveland office at **877-717-5600** to find out more.

Leica
Geosystems



AVATECH
SOLUTIONS®

Altogether Smarter Design.

Autodesk®

Authorized Value Added Reseller

www.avatech.com



CIVIL 3D FOR SURVEYORS

The training you need from IMAGINiT – The Strength behind the Solution

Finally, the survey software and training you've been waiting for.

Your civil engineering department or the firms you survey for have already switched to Civil 3D. Life would be easier, and your time would be more productive, if you could take advantage of it too. We have the class that will take you through the steps of a typical survey workflow: field to finish – designed by surveyors for surveyors. You will receive a certificate that you may use for Professional Development Hours.

Need AutoCAD Civil 3D or Map 3D software? Need help getting started? We've assisted one-man firms and ENR 100 firms, as well as city and county engineers throughout Ohio. With over 100 engineers, surveyors and Autodesk certified instructors, IMAGINiT delivers valuable training and implementation programs designed to empower your team.

Contact Kristen Hannan or Len Horowitz to get started.



TECHNOLOGIES

A RAND Worldwide Company

The largest ATC provider in North America





Authorized Training Center

www.rand.com/imaginitt • Cleveland office: 216-834-8300

Training . Implementation . Software Development . Consulting . Data & Document Management . Asset Management . Design Visualization . Support

RANDOM LINES

by John E. Dailey, P.S.

At this time of the year, I usually write about the importance of voting. I will mention it again this year. There are several very important issues on the ballot this year and they all deserve your investigation and your vote, either up or down.

With some of the things happening in local government, it would appear that greed has taken the place of public service. **Some** of our "public officials" have forgotten who they serve. The really sad part is that all public employees are now suspect. There are a lot of good people out there serving the public, doing their job and they are still under the cloud cast by a few greedy people.

Maybe more people should follow the lead of Harry Truman. Whether you admired him as a President or not, the man from Missouri, was a different kind of President. He probably made as many important decisions regarding our nation's history as any of the other 43 Presidents. However, a measure of his greatness may rest on what he did after he left the

White House. The only asset he had when he died was the house where he lived in Independence, Missouri. On top of that, his wife inherited the house from her mother. When he retired from office in 1952, his income was a U.S. Army pension reported to have been \$13,507.72 a year. Congress, noting that he was paying for his stamps and personally licking them, granted him an 'allowance' and, later, a retroactive pension of \$25,000 per year.

After President Eisenhower was inaugurated, Harry and Bess drove home to Missouri by themselves. There were no Secret Service following them. When offered corporate positions at large salaries, he declined, stating, 'You don't want me. You want the office of the President, and that doesn't belong to me. It belongs to the American people and it's not for sale.'

Even later, on May 6, 1971, when Congress was



[\(Continued on Page 14\)](#)

www.PLSO.com

RANDOM LINES

[Cleveland Surveying News - November 2009](#)

[\(Continued from Page 13\)](#)

preparing to award him the Medal of Honor on his 87th birthday, he refused to accept it, writing, 'I don't consider that I have done anything which should be the reason for any award, Congressional or otherwise.'

And the best for last: Good old Harry Truman was correct when he observed, 'My choices early in life were either to be a piano player in a bordello or a politician. And to tell the truth, there's hardly any difference.'

Modern politicians have found a new level of success in cashing in on the Presidency, resulting in untold wealth. Today, many in Congress also have found a way to become quite wealthy while enjoying the fruits of their offices. Political offices are now for sale.

Maybe we need more people with the principles of Harry S. Truman.

[John E. Dailey](#), Past

Editor's Notes

Distribution for the **Cleveland Surveying News** continues to increase and I am working on advertisers for next year. I will be adding an *extra* issue of the CSN for December. We usually put out 8 newsletters, but I want to make the December issue just for getting timely updates to our chapter members and as an extra "thank you" to our advertisers for working with us through these trying economic times.

On the *Ohio Surveying News* front, I've heard the 2nd 2009 issue should have gone to the printer about 10 days ago, so start looking for it in your mailbox *and* in your **Members Only** download section on ohiosurveyor.org around Thanksgiving. And you should notice some updated looks in OSN's after this upcoming issue.



On the Cover: a tarred over monument box.

2009 Cleveland Chapter Calendar

November 5

November 13

November 16

Seminar Meeting

State Executive Committee Meeting

Executive Committee Meeting

December 11

December 14

State Executive Committee Meeting (if needed)

Executive Committee Meeting (if needed)

January 8

January 11

January 12

January 28

State Executive Committee Meeting

Executive Committee Meeting

Cleveland Surveying News Deadline

Annual Meeting

Executive Committee Meetings

are held at:

Parma City Hall

at 6pm and are open to all Chapter members who want to attend.

Total solutions from the leader in laser scanning

Leica ScanStation 2 Leica HDS6000

Leica CloudWorx

Leica Cyclone II-TOPO

With Leica Geosystems' market-leading 3D laser scanning technology, success and profitability are within your reach. Are you scanning yet?

■ **Industry's most versatile, popular & fast scanners**

ScanStation 2 is the industry's most versatile, popular and fastest scanner for general topographic, as-built and quantity surveys. For close-range as-builts, nothing beats the compact, ultra-fast Leica HDS6000 phase scanner. Cyclone software drives them both.

■ **Comprehensive, efficient software**

Cyclone™ and CAD plug-in CloudWorx™ are industry standards for quickly processing rich laser scan data into any type of deliverable.

■ **Easy-to-learn**

Leica Geosystems newest High-Definition Surveying™ solutions are field-friendly, CAD tech-friendly, and client-friendly ... making it easier for all to profit.

■ **Industry's broadest support resources**

You not only benefit from Leica Geosystems' deeper staff resources, but also from the scanning industry's largest and most active user network.

For more info, visit www.leica-geosystems.us
or call 1-866-920-2300 x 2374

- when it has to be right

Leica
Geosystems

www.PLSO.com

Education Report

[Cleveland Surveying News - November 2009](#)

At our November 16th meeting the Executive Committee will be voting upon, in accordance with Chapter By-Laws, the addition of the language below establishing a standing Scholarship Committee. Chapter member are welcome to attend the meeting for discussion.

Scholarship Committee. The President shall appoint five Chapter members to two-year terms, with appropriate overlap, to serve as the Scholarship Committee. The Scholarship Committee shall be responsible for reviewing and verifying the recommendations and the applications submitted by the students seeking a scholarship from the PLSO Cleveland Chapter, and shall make the final recommendations to the Executive Committee. The Scholarship Committee shall also be responsible for maintaining and updating the 'Scholarship Award Rules and Qualifications'.



Robert A. Papotto
Education Trustee

Executive Committee Meeting highlights

October 19, 2009 Parma City Hall.

In attendance: All officers, John Dailey, Jack Hoy, John G. Hoy

Chapter Delegate: George Hoffman highlighted the October Executive Meeting from Columbus. (See report)

Treasury: John Bischof submitted a written report for September 2009.

Communication: Issue number 2 of the Cleveland Land Surveyor is ready to send out.

Education: Robert Papotto was looking for input on the revisions needed to the bylaws for a scholarship application approval committee.

Voting on the acceptance of the scholarship application form is needed at the next meeting to be ready for January.

Robert sent an email to high school guidance counselors detailing the PLSO scholarship and Trig-Star competition. Local colleges were sent information about the scholarship.

Membership: Sean Snezek reported new membership is down due to the economy.

Program: Topics, cost and location for the December CPD class offered by John Dailey were discussed.

Old Business: John Hoy updated the status of the 2011 Conference. Changes in the conference format to make it more economic for attendees have been approved. The nominating committee reported candidates for Education Trustee, but President Elect is still needed.

New Business: Cost for 2010 CPD seminars discussed.



Michael Ackerman



President
Tim Feller

A full room at
Parma City Hall

Delegate Report

[Cleveland Surveying News - November 2009](#)

MEETING AGENDA Thursday October 8, 2009

4.0 Unfinished Business

- 4.1 Surveyor of the Past Plaques - Barb Jones
- 4.2 Website Proposal - Paul Dinan & Melinda Gilpin
- 4.3 Soil Scientists Issues - Dean Frederick
- 4.4 Proposed Removal of PS Requirement for County Engineer - Dean Frederick
- 4.5 Statute of Limitations - Rose Coors
- 4.6 Nominations Committee Report - Rion Myers

5.0 New Business

- 5.1 New Members (See Attached List) - Bob Akins
- 5.2 2010 Budget (vote at Nov. 13 meeting)

6.0 Inter-Association Delegates

- 6.1 CEAO - Dean Ringle
- 6.2 ODOT - Jim Kenyon/Brett Shearer
- 6.3 State Board of Registration - Paul Dinan
- 6.4 OGRIP - Stu Davis

7.0 Committee Reports

- 7.1 Special Committees
 - 7.11 Political Action - Brad Kramer
 - 7.12 Standards - Brad Kramer
 - 7.121 Change in Law Regarding Metes and Bounds
 - 7.122 Monumentation of Railroads
 - 7.123 Preservation of Monumentation
 - 7.124 Minimum Standards for Plat Revision
 - 7.125 GPS Standards - Jim Kenyon
 - 7.126 FEMA Flood Mapping
 - 7.13 State Line - Dean Ringle
 - 7.14 Historic Review - Mike Besch
- 7.2 Newsletter Editor - PLSO Staff
- 7.3 NSPS Governor - Mike Besch
 - 7.31 Trig Star - Paul Dinan
 - 7.32 CST Coordinator - Pat Leonhardt
 - 7.33 Geocaching Coordinator - Bob Akins
- 7.4 Standing Committees
 - 7.41 Program - Bud Payne
 - 7.411 Annual Conference Updates
 - 2009 - Central Ohio - Brad Patridge
 - 2010 - Miami Valley - Brad Kramer
 - 2011 - Cleveland - John Hoy
 - 2012 - Central Ohio
 - 2013 - Cincinnati and Southwestern
 - 7.412 Fall Seminar Updates

- 2009 - Thomas Hutchins - Dan Susany
- 2010 - Firelands - Phil Rosebeck
- 2011 - Tuscarawas Valley - Bob Akins
- 2012 - Toledo - Pat Leonhardt
- 7.42 Membership - Bob Akins
- 7.421 Membership Brochure Draft
- 7.43 Interprofessional Affairs - A. J. Myers
- 7.44 Education - Dean Frederick
- 7.45 Legislation - Melinda Gilpin
- 7.46 Finance - Paul Dinan
- 7.47 Past Presidents Council - Paul Dinan, et al.
- 7.48 Scholarship - Rion Myers
- 7.49 Scholarship Fund Board - Frank Snyder
- 7.50 Management Review - Dean Frederick



George Hofmann
Delegate

8.0 Chapter Delegate Reports

- 8.1 Askega Chapter - Jim Donathan
- 8.2 Central Ohio Chapter - Brad Patridge
- 8.3 Cincinnati Chapter - Bob Heidkamp
- 8.4 Cleveland Chapter - George Hofmann
- 8.5 Congress Lands Chapter - Isaac King
- 8.6 Firelands Chapter - Tim Riley
- 8.7 Miami Valley Chapter - Ray Payne
- 8.8 Mohican-Killbuck Valley Chapter - Jim Kenyon
- 8.9 Muskingum Valley Chapter - Rob Lowe
- 8.10 Northwest Ohio Chapter -
- 8.11 Ohio State University Student Chapter - Jon Link
- 8.12 Ohio Valley Chapter - Larry Gardner
- 8.13 Scioto Valley Chapter - George Seymour
- 8.14 Southwestern Chapter - Rose Coors
- 8.15 The Thomas Hutchins Chapter - John Francis
- 8.16 The Univ. of Akron Student Chapter - Andrew Kis
- 8.17 Toledo Chapter - Tom Silva - Pat Leonhardt
- 8.18 Treaty Lands Chapter - John Jauert
- 8.19 Tuscarawas Valley Chapter - Dave Bodo
- 8.20 Western Reserve Chapter - Jeff Mallison

9.0 President-Elect's Report - Rion Myers

10.0 Executive Director's Report - Melinda Gilpin

11.0 President's Report - Dean Frederick

Executive Committee Meeting - Thursday October 8, 2009 Meeting call to order 6:17 P.M.

- 1.4 Quorum present
- 2.0 Secretary's minutes for Sept. 2009 were accepted.
- 3.0 Treasurer's report for Sept. 2009 accepted subject to audit.
- 4.2 Website, should be up and running within next 4 weeks, due to some glitches it may not demo at the fall seminar.
- 4.4 Removal of P.S. . House rules committee sponsor testimony heard Oct. 7, 2009
- 4.6 Rion Myers reported that the nominations were closed and that ballots would be mailed on Nov. 18th and be due back by Dec. 15.
- 5.1 New Members, 4 student, 3 reinstatement, 2 retired and 2 life accepted.
- 5.2 Proposed budget for 2010 submitted, It will be voted on at the November meeting.
- 7.2 Newsletter did not go out. Melinda Gilpin is using a new format and will take over and get the next issue out.
- 7.31 Tri Star : Looking for annual donations for 2010. Large chapters are asked to consider \$75 and small chapters \$25. Due April 2010.
- 7.32 CST : No one signed up to take test at fall seminar. It will be offered again in Feb. 2010 at the annual conference.
- 7.41 Program: Quick update as to where chapters are in planning upcoming seminars.

[\(Continued on Page 18\)](#)

www.PLSO.com

Delegate Report


(Continued from Page 17)

Cleveland Surveying News - November 2009

- 7.42 Membership: Bob Akins has had no comments on the proposed brochure. Would like comments by November, If none will send to print.
- 7.47 Past Presidents: Next meeting October 30, 2009 at 3PM
- 9.0 President-Elect: Surveyor of the Past and Member of the Year nominations due by Friday, Dec. 11, 2009
- 10.0 Executive Director: Melinda had no further comments.

Respectfully submitted,

George A. Hofmann



AEROCON

Aerocon Photogrammetric Services Inc
Dedicated to providing quality photogrammetric services since 1967

- Aerial Photography
- Digital Orthophotography
- Digital Topographic Mapping
- Analytical Triangulation
- DTM/DEM Surface Generation
- LiDAR
- Airborne GPS
- GIS Services
- Volumetric Inventories

4515 Glenbrook Road
Willoughby, OH 44094-8215
440.946.6277
440.946.2646 Fax
e-mail: skymap@aerocon.com
www.aerocon.com

The globe graphic features several service tiles: AERIAL PHOTOGRAPHY, GPS, AIRBORNE GPS, DTM/TIN, PLANIMETRICS, LIDAR, and VOLUMES. A central tile shows a building with the text 'EST. 1967'.

G. I. S. Updates

Look for updates for all 6 previously reviewed GIS's in the upcoming December issue of the **Cleveland Surveying News**.

Have county GIS questions? Email the editor: k666@cox.net

Curious about getting GIS software?

Here's some information: www.esri.com/industries/surveying/starterkit.html

G.I.S. Layers

By Joshua Appleman, GISP
jappleman@b Robinson.com

I was recently reading the October 2009 issue of Point of Beginning (POB) magazine, a publication geared towards Professional Land Surveyors. I did not get past the editor's Points which had the title, "Can you see the Opportunities?" This was a powerful headline that grabbed my attention and compelled me to read more.

After closing in on the end of the article, the author mentioned GIS and referred to GIS and other services as "Areas where the expertise of surveyors is needed." Another title in the same issue was "Our Love-Hate Relationship with Mapping and GIS." The author of this article, Joseph V.R. Paiva, PE, PS, PhD, stated "To me, the activities involved in GIS are natural for a surveyor, just like CAD, COGO, and CARTO activities."

I can personally say, there are not many GIS professionals that would say that surveying is natural to them. I have learned many valuable things from licensed surveyors that were never covered in Cartography, Remote Sensing, and Geographic Information Systems classes in college. In addition, and what got my undivided attention was a three page article about the use of LiDAR data in the State of Ohio Imagery project. It is a fact, GIS is being embraced by the licensed land surveyor and large opportunities continue to exist using this technology.

In this issue, I will highlight additional online data sources available to the Land Surveyor and anyone wanting to find geospatial data. I will concentrate on data available through the United States Department of Agriculture's Natural Resources Conservation Service (NRCS). NRCS has been around since the 1930s, and was originally called the Soil Conservation Service. This organization has provided leadership in a partnership effort to help America's private land owners and managers conserve their soil, water, and other natural resources. Data from the NRCS online data resource is usually free of charge or a nominal fee to download.

The NRCS website has data listed by type, making the navigation experience painless to the first time user of the website. The website link is: www.nrcs.usda.gov/technical/maps.html this will

Cleveland Surveying News - November 2009

bring you to a directory for Maps, Imagery, Data and Analysis. One you will not want to pass up is "Data Resources," which is the node of the National Spatial Data Infrastructure. There are more than a half a dozen Data Types in this section alone. Some of the data includes Digital Elevation Data (DEM, NED, LIDAR), Digital Raster Graphics (DRG), Soil Survey Geographic (SSURGO), State Soil Geographic (STATSGO), and Watershed Boundary Data (WBD).



Joshua Appleman
GISP

A web link, which is more focused on Ohio, is www.oh.nrcs.usda.gov/technical/gis/links_launchpad.html. The online data source for Ohio is organized in a list and clearly marked with descriptions. Some data sources are linked to USGS Geodata for Ohio by 1:24,000 Scale Quadrangle including: DEM, DRG, Boundaries, Hydrography, Public Land Survey, Roads and Railroads. You can also download a GIS shapefile for the 7.5 minute USGS quad index for Ohio at: gis1.oit.ohio.gov/geodata/data/index75.zip. And, if you are interested in Soil Survey data, you can pinpoint your areas of interest using the following link: soildatamart.nrcs.usda.gov/Survey.aspx?State=OH

The availability of geospatial data to the public is increasing. Many data sources are updated automatically and ubiquitous. Some online data sources can be viewed by software that supports Web-Map Services (WMS), which eliminates the need to store large geospatial datasets. And ultimately, your data is up-to-date with FGDC Compliant metadata. The availability of GIS data to the land surveyor may help surveyors in the office, make better decisions and improve direction and provide efficiency for the field crews that are deployed.

I hope you find all of these resources to be as exciting and useful as I do. The data from these organizations will advance everyone's efficiency and knowledge in the every-changing field of GIS, surveying, conservation, and the myriad of other specializations that make our jobs challenging and rewarding. If you have any comments, please feel free to email me at jappleman@b Robinson.com

Executive Committee Meeting Minutes

[Cleveland Surveying News - November 2009](#)

September 14, 2009 Parma City Hall.

In attendance: All officers except Peter Zwick, Robert Papotto, Tom Snezek
Meeting called to order at 6:01 pm

Secretary's minutes: Executive Committee meeting minutes from August accepted as submitted.

Chapter Delegate: George Hoffman highlighted the September 11 Executive Meeting from Columbus.

- 4.21 The new website design was introduced. It should be online by the end of October.
- 4.3 The issue of soil scientist surveying without a license is still being investigated.
- 4.5 Rose Coors reported that they have a rough draft for a statute of limitations for surveyors.
- 7.12 Tim Riley submitted a letter regarding the Huron County Rural Water Plans. No reference to existing monumentation or specification to find and protect monuments during construction is in the plans.

Treasury: John Bischof submitted a written report for August 2009.

Communication: Bob Hoy reviewed upcoming newsletter articles.

Education: Robert Papotto sent a scholarship application review update via email.

Membership: No report.

Program: Changes for the cost and location of the 2010 CPD series was discussed.

Old Business:

John Hoy updated the status of the 2011 Conference. We are still waiting for approval from the State Program Committee on the proposed changes before a hotel can be finalized. John said we need to act soon to get better rates.

New Business:

John Dailey offered to donate his time for a 4 hour CPD class.

Meeting adjourned at 7:45 pm.



Michael Ackerman
Secretary

Respectfully Submitted,

Michael A. Ackerman

PLSO 2010 Proposed Budget

[Cleveland Surveying News - November 2009](#)

TOTAL PROJECTED REVENUE	400,850	371,000	
<u>Expenses</u>			
A. Professional			
Executive Director Payroll (Includes taxes)	65,000	65,000	
Executive Director Expenses	2,000	4,000	
Certificates and Plaques	1,500	1,500	
Inter-Association Support	4,000	3,500	
Legal Consulting	3,000	3,000	
Printing and Mailing (Ballots and Brochures	3,000	3,000	
Annual Meeting Curtesy Fees	2,000	ELIMINATE	
Officer Travel Expense	7,000	4,000	
<u>Legislative Services</u>	<u>3,000</u>	<u>2,500</u>	
Sub-Total: Professional	90,500	86,500	
B. Administration			
Assistant Executive Director Payroll (Incl. taxes)	55,400	56,000	
Assistant Executive Director Expenses	2,000	2,000	
Administrative Assistant Payroll	15,000	5,000	
Administrative Assistant Expenses	500	0	
Rent	16,260	16,260	
Telephone	2,000	2,000	
Web Site	1,000	1,500	
Copies (outsources)	100	ELIMINATE	
Postage	3,000	2,500	
Office Supplies and Maintenance	3,000	3,000	
Office Furniture and Equipment	1,500	1,500	
Bank and Credit Card Charges	5,000	5,000	
Accounting Consultant Fees	2,000	2,500	
Purchase of Resale Items	1,000	1,000	
Insurance	3,600	3,600	
Miscellaneous (moving fees, filing fees, etc.)	1,000	1,140	
Sub-Total: Administration	112,360	103,000	
C. Education			
OSN Printing and Mailing	22,000	18,000	
OSN Editor Payroll (Includes Taxes)	3,750	0	
Refresher Course	2,000	2,000	
Book Purchase	2,500	2,500	
Educational P.R. (videos, etc.)	1,000	1,000	
TrigStar	1,000	1,000	
Annual Conference (Does not include Seed \$)	135,000	125,000	
Summer Seminar	0	ELIMINATE	
Fall Seminar (Does not include Seed \$)	30,000	30,000	
Business Seminar	0	ELIMINATE	
Member Appreciation	0	2,000	
Sub-Total: Education	197,250	181,500	
Total Expenses:	400,610	371,000	

CPD Seminar Review October 1, 2009**STATE BOARD of REGISTRATION UPDATE**

The good news is that John Greenhalge, the Executive Director of the Ohio State Board of Registration for Engineers and Surveyors, did not recognize many of the thirty faces in the audience from any previous investigations. He stated that “the vast majority of licensees are doing the right thing.” While 60% of his department’s efforts are spent chasing down illegal practitioners (some have been reported by our members over the years), the most common violation by licensed surveyors (40 of 85 complaints) is failing to meet the State Minimum Standards. John is hopeful that the educational opportunities afforded by on-going CPD seminars will eventually improve compliance. He acknowledged that the nature of complaints is changing because of economic impacts (financial pressure from clients, global competition, and moonlighting). Plan stamping, aiding and abetting illegal practice, and failing to safeguard one’s seal are frequent sources of complaints.



Peter D. Zwick
Past President

John emphasized that the professional Code of Ethics rules have the same force of law that the Minimum Standards have. Go to www.peps.ohio.gov and select “Laws and Rules” for links to the Ohio Revised Code and Administrative Code that govern our profession. He cautioned that the public now expects great integrity from us surveyors – after all, we are professionals.



John Greenhalge, Executive Director of the Ohio State Board of Registration for Engineers and Surveyors

Two very helpful Board opinions are also available at that same website: The Board has clarified that *only* surveyors may prepare metes and bounds legal descriptions; and that it is illegal for an unlicensed person to offer or to provide construction staking *to the public*. Click:

www.peps.ohio.gov/NewsReleases/BoardOpinions.aspx for the complete text, which we will all find very interesting. John recommended that surveyors check the website annually for updates. Some of our members were very concerned with survey “brokerage” firms. “Brokers” are technically legal, but they may not contract for surveying, may not advertise nor offer to provide surveys, nor actually provide surveys. The actual surveyor *must receive payment directly*, then pay any finder’s fee or commission -- and avoid kickbacks!

State Board “rolling” audits are underway, and are often triggered by late license renewal, so don’t miss the upcoming deadline of December 31st. If you still need CPD credit hours, Cleveland PLSO will offer seminars on November 5th and December 5th – see notices elsewhere in this issue. John did recommend obtaining credit hours through professional associations such as PLSO. Don’t forget to drop the Board a line to urge them to keep Ohio’s annual renewal fees the lowest in the U.S.A.

And by the way, John began his speaking by telling us he reads our chapter’s newsletter, the **Cleveland Surveying News**. It gets around!