

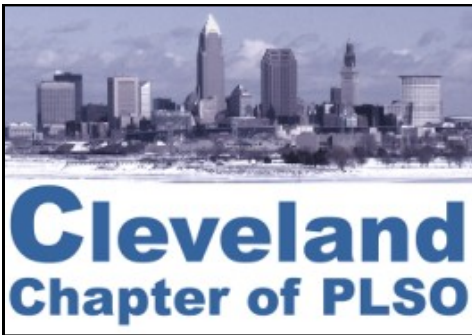


Cleveland Surveying News

November 2010

Issue Features:

- 2011 Conference Details & Registration Forms
- November 4 CPD Seminar
- O.U.P.S. Alert



P. O. Box 81713
Cleveland, OH 44181-0713

Volume 9, Issue 6 Distribution: 236

Editor: Robert Hoy, P.S.
 Website: Rob Krause, P.S.

2010 Advertising Rates:

Full page: 9.6"h x 7.3"w \$400 yr.
1/2 page: 4.8"h x 7.3"w \$200 yr.
1/4 page: 4.8"h x 3.6"w \$100 yr.

Contact: Robert Hoy, k666@cox.net

All photographs © Robert Hoy
 unless stated otherwise.

ADVERTISER INDEX

3	Roberts Surveying Supplies
5	Leica Geosystems
9	GeoShack
11	Precision Laser & Inst.
14	Jake's Stakes
16	Avatech Solutions
17	Imaginit Technologies
19	Aerocon Photogrammetry
21	City Blueprint of Toledo

*Recalling the motivation for this chapter's existence and the response we've had to date, our motto should be -
 "United we stand, divided we perish."*

- William J. Haas, 1974

Contents

Features

November 4 CPD Seminar	3
2011 Conference Details	6
2011 Annual Conference Registration Forms	25
O.U.P.S. Alert	17

Meetings

October Seminar Review	17
Executive Meeting Highlights	22

Articles

Random Lines by John Dailey, P.S.	13
---	----

Reports

President's Message	4
Delegate - Attachments (PLSO Proposed Budget)	10
Education - TrigStar	12
President-Elect: Elections	12
Communication Report	14
2011 Conference - Exhibits	17
Editor's Notes	20
Secretary's September Minutes	23

Miscellaneous

Survey Discs	12
"I can do that job for less money!"	15
Chapter Calendar	19
PLSO Membership Application Forms	28

2010 Executive Committee

President	Michael A. Straub, P.S.	440-333-1700	mikes@straubsurveying.com
President-Elect	Dino Lustri, P.S., P.E.	216-387-3781	dino@dlengineeringllc.com
Past President	Timothy J. Feller, P.S.	440-585-9800	timf@mcsteen.com
Treasurer	John J. Bischof, P.S.	440-399-0834	bischof@cvelimited.com
Secretary	Michael A. Ackerman, P.S.	216-642-1130 x115	mackerman@dgbassoc.com
Delegate	George A. Hofmann, P.S.	440-234-5544	george_hm@ameritech.net

Trustees

Communication	Robert G. Hoy, P.S.	216-389-7677	k666@cox.net
Education	Christopher J. Tomko, P.S., P.E.	440-925-0797	ctomko@rewarner.com
Program	Eric W. Short, P.S.	440-366-9618	shorte@windstream.net
Membership	Sean T. Snezek	216-970-0752	sneezeman21@yahoo.com

November 4th CPD Seminar

[Cleveland Surveying News - November 2010](#)

Proceeds go towards our Scholarship efforts.

Panel Discussion of Hot Local Surveying Issues, 1.5 PDH's moderated by Michael Straub, Chapter President

Surveyor Panel:

- Peter D. Zwick, Zwick Associates, Inc.
- Rusty Rosebeck, P.A. Rosebeck & Assoc., PLSO Past President
- Mark Yeager, KS Associates, Inc., 2008 PLSO Member of the Year
- Tom Snezek, Cuyahoga County Engineer's Office

Topics: Economic pressures compromising ethics & minimum standards

Should surveys be recorded?

Legal development: 2009 State Board opinions, Legal Descriptions & Construction Layout
ODOT's new note regarding Survey Parameters

Cost: PLSO Members \$20, Non-Members \$35

Schedule: 6:00 Socializing, registration, & pizza
6:30-8:00 Panel Discussion

Location: Cuyahoga County Engineer's
Test lab Facilities,
2433 Superior Viaduct, Cleveland
Free parking with security camera surveillance ([Map](#))



Eric Short
Program Trustee

Reservations contact:
Eric Short
by [Tuesday, November 2](#)
for reservations, 440-366-9618
shorte@windstream.net

HIGH GRADE HARDWOOD SURVEY STAKES

DELIVERY AVAILABLE

- TOPCON DEALER
- SOKKIA DEALER
- FIELD SUPPLIES
- INSTRUMENT SALES, SERVICE & RENTAL
- GPS TECHNOLOGIES
- FIELD EQUIPMENT



ROBERTS

Surveying Supplies

WWW.ROBERTSSURVEYING.COM

5758 Ridge Road Parma, Ohio 44129

Phone (440) 842-2218

Fax (440) 842-0802

President's Message

[Cleveland Surveying News - November 2010](#)

Greetings all. Its hard to believe the end of October is here. What a great experience it has been for me being able to serve as your Chapter President. I've had the opportunity to watch our organization operate on cruise control. Our chapter forefathers really did a nice job establishing how this group works. A real bonus has been being able to stay on top of what is happening locally and statewide from a surveying perspective. I think all members of the Executive Committee would echo those sentiments.

If you have not had the opportunity to be a part of the leadership the chapter recently, join us! It's only eight meetings per year, plus the Annual Meeting in January. I'll repeat a comment I made in an earlier edition of CSN – after one of the early spring meetings I was walking to my car and one of our newest members approached me with a smile on his face. "Mike, thanks for inviting me to run for office!" We talked about the knowledge gained, keeping on top of current area survey issues, and realizing that we are not an island with regard to our problems, challenges, and other experiences. It truly is a benefit.

As you all are aware, John Hoy is chairing the 2011 Annual Conference to be held at the Intercontinental Hotel, attached to the Cleveland Clinic this February. As we will not be offering our chapter CPD seminars in the spring, the Conference will be a great (and close!) way to get your credits for next year. Also, we are looking for donations for the auction to support the PAC and/or Scholarship funds. You can decide to which fund your donation can support. Cash or items of interest can be donated. Cash donations will be used to purchase local items (e.g. a basket of Malley's chocolates) for the auction.

Mid-term elections are coming up. I encourage you to familiarize yourself with the issues and the candidates. Vote – be a part of our future.

Finally, I've talked a lot this year on providing a professional service when we perform our surveys. Do what makes you proud – not what might make you look over your shoulder. We all have enough skeletons in our closets.

As always, let's work hard for a prosperous and healthy 2010. Optimism Rules!

[Michael Straub, P.S.](#)
Chapter President



Michael A. Straub
President

2011 Conference Hospitality Donations

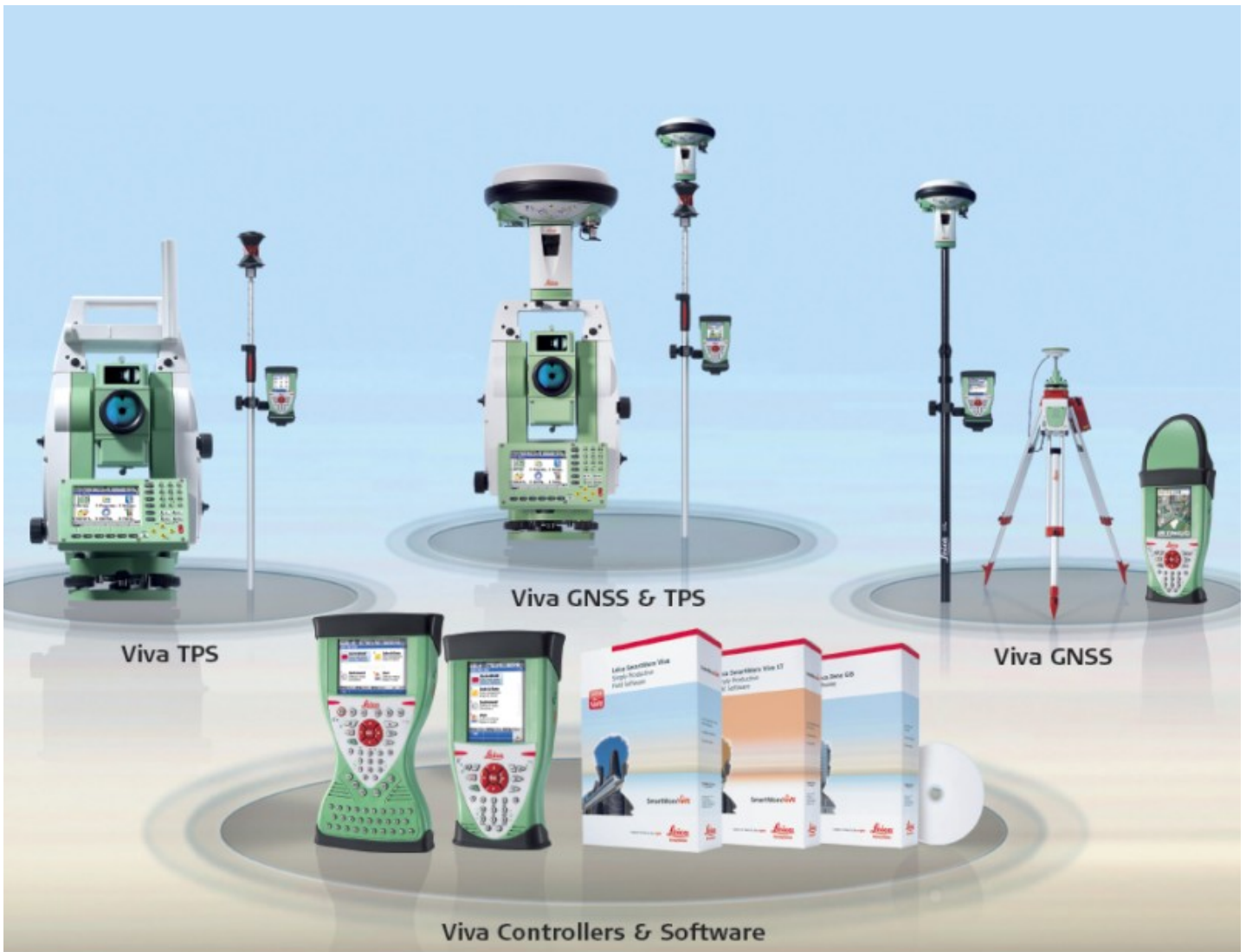
The Cleveland Chapter is hosting the 2011 Annual Conference and as Hospitality Chairman it is my pleasure to help provide a warm welcome to our fellow professionals. The hospitality room will be open to registrants both Wednesday and Thursday evening and will provide a great opportunity to network and socialize.

To insure a fine Cleveland reception I am looking for donations of \$100 from local surveying firms. If you are able to assist please me at 440-585-9800 or timf@mcsteen.com. Thank you and we are all looking forward to a wonderful event.

Tim Feller
Hospitality Committee Chairman



Timothy Feller



Leica Viva – It does not get more versatile.



Introducing Leica Viva – **a new generation measurement system** that combines the latest state-of-the-art technologies into an unrivalled portfolio of total stations, GNSS receivers, system controllers and onboard software. Encompassing innovative, feature-rich functionality with a new, modern and ergonomic design, Leica Viva is easier and more intuitive to use than any of its predecessors, yet it does not compromise on speed and precision.

For more information, contact your local Leica Geosystems representative:
Alex Cherchian ■ 614-264-6722 ■ alex.cherchian@leicaus.com

www.leica-geosystems.us

- when it has to be **right**

Leica
Geosystems

2011 Annual Conference Update

[Cleveland Surveying News - November 2010](#)

The Annual Conference is just over three months from now. Before you know it, tomorrow will be the January 14th Registration deadline. Expect in the next few days the official registration form, speaker biographies and course descriptions will be up on the [PLSO website](#). Remember that PLSO members receive a big discount on their registration. If you're not already a member, become one today and save. To help your planning the following is a glance at the schedule and activities. We mixed Surveying and Business sessions throughout the schedule and designated Friday "Technician Day".



John G. Hoy, P.S.
2011 Conference
Chairman

A lot of time and hard work went into creating this *New and Improved* PLSO Annual Conference. I believe that one of the best improvements is holding the awards, scholarship recognitions and the officer induction ceremonies during events where everyone is in attendance. The Friday evening *After the Conference* events will be great opportunities for some social time with other PLSO members. Starting the conference Wednesday evening and finishing Friday allows us to keep work during the week and the weekend for family.

One look at the cover of this issue and you'll agree that PLSO has never held a conference at a location of the quality of this Intercontinental Hotel. That quality extends to every room and meeting space they offer.

I've noticed an upswing in business lately and in talking with other members they are positioned to finish the year satisfactorily. 2011 is looking to be the turn of these economic times. A easy start will be attending the conference, brushing up on what's new and previewing the surveying "toys" in the exhibits. See you there.

PLSO Member Discount: If you are *not* a PLSO member, check out the important dates on the Conference registration and membership application forms (included in this issue). Mail your membership application in December so it arrives before Jan. 1

Preview of Sessions

Building a Positive Culture: Why Happiness Matters, Jim Smith the Executive Happiness Coach

Jim brings the science of Happiness and Positive Psychology into the workplace to help leaders create organizations that respect and engage people while also delivering great results. In this interactive session, Jim will help you:

- Understand the financial impact of Positive in the workplace and how fostering happiness in your employees can improve your bottom line.
- Learn how to make happiness an agenda item equal in importance to sales and profit—because in an era of instant access to infinite data, the only thing that differentiates you from your competition is your people. You need to have Real Conversations about happiness, starting at the top of the organization.
- Practice appreciation and happiness across the whole system, weaving it into the operational fabric of your organization.
- Embody happiness yourself through intentional actions that are simple yet powerful, and which you will learn and practice in the session.

2011 ALTA/ACSM Standards Update, Curt Sumner, L.S.

This course will outline the changes and additions incorporated into the 2011 version of the ALTA/ACSM standards by the joint committee composed of representatives from ALTA, ACSM, and the Lenders Council. The 2011 version is scheduled to go into effect February 23, 2011. Participants will be given an explanation for the logic behind the changes and additions, and will be able to discuss them with the presenter. Each participant will receive a copy of the 2011 version with changes and additions shown in red letters for easy reference when discussing them with prospective clients, and in preparing proposals to perform the surveys. There will also be discussion regarding the use of the ALTA/ACSM Land Title Survey Requirements as a Risk Management tool in developing a scope of work, and thus establishing clear expectations for the client.

2011 Annual Conference Schedule [Cleveland Surveying News - November 2010](#)

S = Surveying **B** = Business **T** = Technician

Wednesday Evening Wine & Cheese Reception

S Eric Gakstatter - Mapping & Redesign of golf courses using GPS.

Thursday Morning

Continental Breakfast in the exhibit hall

S Opening Address by Curt Sumner - The State of NSPS

S Eric Gakstatter - What's new for GPS in 2011

S John Greenhalge & Frank Snyder - 2009 Opinions of the State board of Registration

B Jim Smith - Why Happiness Matters: Building a positive culture in the workplace

S Exhibitor Information / Demonstration Sessions

Thursday Lunch - PLSO Awards

Thursday Afternoon

S Curt Sumner - The 2011 ALTA/ACSM Land Title Standard Requirements

S NEORSD - Doing business with the sewer district and the Small Business Enterprise program

B Licata & Toerek - 10 Legal Tools every small business needs to survive

S Kucera International - Using LIDAR in the disaster zones of 2009 Haiti earthquake & Tennessee floods

S Zoning and Alternative Energy Requirements

B David L. Harvey III - Creating Professional Partnerships to share office & support staff

S Exhibitor Information / Demonstration Sessions

Thursday Evening The PLSO Benefit Social: Scholarship Auction and PAC Auction in the exhibit hall with hors d'oeuvres and cash bar

Friday Morning

Continental Breakfast in the exhibit hall

S John Dailey - Cleveland Metroparks Land History

S The Cleveland Metroparks GIS

T Jeff Stanczyk of the Cleveland Police Department - Urban Field Safety

B Copyright for Surveyors and Engineers

T Andy Parr - Creating accurate contours and mapping standards for CADD

Friday Lunch - Induction of the 2011 PLSO State Officers

Friday Afternoon

S Landmarker Geospatial - How to Embrace and Thrive with Machine Guidance Technology

B Mark Yeager - Surveyor Safety Budgeting and Safety Manuals

T Jeff Stanczyk of the Cleveland Police Department - Urban Field Safety

B B. L. Robinson - Why your business needs its own internal GIS

The PLSO Annual Meeting

The OPTIONAL, Friday evening "After the Conference" Event (details being finalized)

Cleveland Cavaliers vs. L.A. Clippers

or

Dinner and the Show at the Palace Theater: South Pacific

2011 Annual Conference Speakers [Cleveland Surveying News - November 2010](#)

Eric Gakstatter founded Discovery Management Group in 2000 and spent his previous 14 years at a hardware/software manufacturer of GPS mapping equipment. DMG has successfully completed over 50 golf course projects. Some are as small as 3D graphic images for a proposed renovation. Others are as large as 18-month, 27-hole new construction projects from the ground up. Eric is very active in the GPS community. He attends and/or speaks at several technical conferences each year. He writes a bi-weekly Survey/Construction column for GPS World magazine, the leading GPS publication in the world.

Curt Sumner, L.S. is the executive Director, American Congress on Surveying and Mapping (ACSM), and National Society of Professional Surveyors (NSPS). Curt Sumner has served as the executive director for ACSM and NSPS since 1998. Among his duties as executive director is visiting with the surveying societies in each of the 50 states. During these visits, he often provides workshops for Continuing Education credits. One such workshop is on the topic of risk management, incorporating the ALTA/ACSM Land Title Survey standards as a tool in developing sound contracts for surveying services, and applying the principles outlined in Schinnerer's *The Surveyor's Contracts and Risk Management Manual*. Curt is a professional surveyor, licensed in Virginia and Maryland. Prior to taking on the role of executive director for ACSM and NSPS, he was in private practice from 1973 until 1998.



Jim Smith, *The Executive Happiness Coach* is an international speaker, executive and life coach, author, and change consultant. Jim provides his clients with inspiration and practical tools so they can lead happier lives and build more positive work cultures. Jim spent more than 20 years in the insurance, banking, and hospitality industries, where he held senior executive roles in Sales, Finance, Operations, and HR, so he understands what it takes to succeed in business. He has been coaching executives and organizational leaders since 1992, and has coached leaders from seven countries and four continents to achieve greater happiness, balance, and leadership effectiveness.



Jim's clients include non-profit, government, and educational organizations, as well as top-tier Fortune 500 companies in the service, healthcare, and manufacturing sectors. Jim holds an MBA in organizational behavior from the Weatherhead School at Case Western Reserve University and a BSBA in management and finance from John Carroll University. Jim holds certification as a Senior Professional in Human Resources and he is a Past President of the Cleveland Society for Human Resource Management. He is a founder and currently serves as President of the Cleveland Coach Federation and is on the board of the Northern Ohio HR Planning Society. In addition, he is an adjunct Instructor for Baldwin Wallace College, in their Graduate program in Human Resources.

John Hoy: I recently attended an event where Jim Smith was the speaker. He does have an extensive knowledge of dealing with other people at work. No matter what, everyone has to co-exist at work. Leaders lead, workers follow, but if they're not happy everyone walks out the door to find a better place. Jim proved to be an energetic and engaging speaker with solid ideas for improving the work environment and the relationships between workers.

Sharon L. Toerek focuses her legal practice at Licata & Toerek on intellectual property law, advising clients on trademark, copyright, trade secret, non-competition, and other intellectual property matters, corporate transactions, and business law issues. Toerek has a particular concentration of clients in the advertising, marketing and creative services industries, and she provides legal counsel on issues faced by those industries. Toerek has chaired the Intellectual Property Section of the Cleveland Bar Association, and has conducted numerous presentations on intellectual property law topics before the Cleveland Bar Association, American Advertising Federation (AAF) Cleveland, and many more. Toerek received a B.A. degree in Political Science from Cleveland State University, and and Juris Doctor from Cleveland-Marshall College of Law.



(photos courtesy of each individual speaker)

2011 Annual Conference Speakers

[Cleveland Surveying News - November 2010](#)

Jeff Stanczyk of the Cleveland Police Department spoke at a Cleveland Chapter seminar in the autumn of 2008. He is often sent into a hostile neighborhood after an incident to help diffuse the situation and calm the residents. Jeff is very knowledgeable about how to think safely when driving and working in cities. It's good to have this knowledge because a dangerous environment may not always present itself as such.



Jeff is an extremely engaging speaker, to a degree that we considered having him present the keynote opening speech on Thursday morning because he would definitely get people excited and ready for the day's events! He spoke mainly to business owners and office surveyors back in 2008, but he *really* needs to be in front of *your* field personnel to get the information directly to them.

John F. Greenhalge is Executive Director of *Ohio State Board of Registration for Professional Engineers and Surveyors*. John F. Greenhalge is the Executive Director of the Ohio State Board of Registration for Professional Engineers and Surveyors. The Ohio State Board of Registration for Professional Engineers and Surveyors is the state regulatory agency that licenses and regulates the professions of engineering and surveying in Ohio. The Board has approximately 30,000 registered professionals, 2,000 registered firms and administers more than 2,500 licensing examinations yearly. Mr. Greenhalge has been with the Board since 1998 previously serving as the Board's Enforcement Supervisor and as the Assistant Executive Director. Mr. Greenhalge is a member of the National Council of Examiners for Engineering and Surveying (NCEES) where he serves as Chairman of the NCEES Committee on Law Enforcement. Mr. Greenhalge is a frequent lecturer on regulatory investigation and professional ethics.



in the

RTK GNSS

Palm of Your Hand

ultimate in

Affordability

& Versatility

Contact your local representative for a FREE demonstration! ... Tom Bacon (440) 343-2285 or tbacon@geoshack.com

883 Hampshire Road, Ste. J Stow, OH 44224... (800) 527-3762... www.geoshack.com

Delegate Report

[Cleveland Surveying News - November 2010](#)

MEETING AGENDA Friday October 7, 2010

4.0 Unfinished Business

- 4.1 Surveyor of the Past Plaques - Barb Jones
- 4.2 Website - Melinda Gilpin
- 4.3 Soil Scientists Issues - Dean Frederick
- 4.4 Statute of Limitations – Rose Coors

5.0 New Business

- 5.1 New Members (See Attached List) - Bob Akins
- 5.2 Proposed Budget for Fiscal Year 2011-2012

6.0 Inter-Association Delegates

- 6.1 CEAO - Dean Ringle
- 6.2 ODOT - Jim Kenyon
- 6.3 State Board of Registration - Melinda Gilpin
- 6.31 Legal Description Questions
- 6.4 OGRIP - Stu Davis

7.0 Committee Reports

- 7.1 Special Committees
 - 7.11 Political Action - Dean Frederick
 - 7.12 Standards - Brad Kramer
 - 7.121 Preservation of Monumentation
 - 7.122 Minimum Standards for Plat Revision
 - 7.123 GPS Standards - Jim Kenyon
 - 7.124 FEMA Flood Mapping
 - 7.125 Definition of Surveying
 - 7.13 State Line - Dean Ringle
 - 7.14 Historic Review - Mike Besch
- 7.2 Newsletter Editor - PLSO Staff
- 7.3 NSPS Governor - Robert Akins
 - 7.31 Trig Star - Pat Leonhardt
 - 7.32 CST Coordinator - Pat Leonhardt
 - 7.33 Geocaching Coordinator - Robert Akins
- 7.4 Standing Committees
 - 7.41 Program - Dean Frederick
 - 7.411 Annual Conference Updates
 - 2011 - Cleveland - John Hoy
 - 2012 - Central Ohio - Kevin Stacy
 - 2013 - Cincinnati and Southwestern - Rose Coors
 - 7.412 Fall Seminar Updates
 - 2010 - Firelands - Phil Rosebeck

- 2011 - Tuscarawas Valley - Bob Akins
- 2012 – Toledo – Pat Leonhardt
- 7.42 Membership - Bob Akins
- 7.43 Interprofessional Affairs - AJ Myers
- 7.44 Education - Dean Frederick
- 7.45 Legislation - A.J. Myers
- 7.46 Finance - Paul Dinan
- 7.47 Past Presidents Council - Dean Frederick
- 7.48 Scholarship - Rocky Lomano
- 7.49 Scholarship Fund Board - Frank Snyder
- 7.50 Management Review - Rion Myers



George Hofmann
Delegate

8.0 Chapter Delegate Reports

- 8.1 Askega Chapter - Jim Donathan
- 8.2 Central Ohio Chapter - Brian Bingham
- 8.3 Cincinnati Chapter - Bob Heidkamp
- 8.4 Cleveland Chapter - George Hofmann
- 8.5 Congress Lands Chapter - Isaac King
- 8.6 Firelands Chapter - Tim Riley
- 8.7 Miami Valley Chapter - Harry Herbst
- 8.8 Mohican-Killbuck Valley Chapter - Jim Kenyon/Lynn Snyder
- 8.9 Muskingum Valley Chapter - Rob Lowe
- 8.10 Northwest Ohio Chapter - (no delegate)
- 8.11 Ohio State University Student Chapter - Domonic Brigano
- 8.12 Ohio Valley Chapter - Al Smith
- 8.13 Scioto Valley Chapter - George Seymour
- 8.14 Southwestern Chapter - Rose Coors
- 8.15 The Thomas Hutchins Chapter - John Francis
- 8.16 The Univ. of Akron Student Chapter - Luke Walker
- 8.17 Toledo Chapter - Bryan Ellis
- 8.18 Treaty Lands Chapter - John Jauert
- 8.19 Tuscarawas Valley Chapter - Dave Bodo
- 8.20 Western Reserve Chapter - Rick Hunsicker

9.0 President-Elect's Report - Brett Tieben

10.0 PLSO Staff Report - Melinda Gilpin

11.0 President's Report - Rion Myers

Executive Committee Meeting - Friday October 7, 2010

Meeting call to order 6:07 P.M.

1.3 Alternate Delegates seated

1.4 Quorum present

2.0 Minutes for Sept., 2008 and January 2009, and September, 2010 were approved

3.0 Treasurers report July, 2010 was accepted subject to audit. August and September 2010 were not submitted.

4.3 Soil Scientist Issues: Still being discussed.

5.1 New members: Motions to accept 2 professionals, 1 associate, 2 student and 3 reinstatements, Motions passed.

5.2 Proposed budget for Fiscal Year 2011-2012 was distributed. Delegates were asked to take it back to their chapter for discussion. The executive committee will vote on it at the Nov. 2010 meeting.

6.3 State Board of Registration: There will be spots shown on PBS on the surveying profession. Melinda will post on the web if a schedule becomes available.

6.31 Legal Descriptions: The state board is looking into the practice of some surveyors who are writing legal description from a known point and going directly to the parcel they are describing, instead of going along the centerline of a street. The line they are using is a random line which may cut thru parcels. Anyone with samples of this should forward them to the state board or the PLSO office.

7.11 Political Action: Donations to PAC funds over \$100.00 must be by check.

[\(Cont'd on Page 15\)](#)



Precision Laser & Instrument, Inc.

WWW.LASERINST.COM



**24 Month 0% Interest
Financing Available**



CLEVELAND
888-714-GP53
CINCINNATI
888-714-GP52
COLUMBUS
800-714-GP51
PITTSBURGH
724-266-1600

Education - TrigStar Report

[Cleveland Surveying News - November 2010](#)

In an attempt to revive the Trig-Star program within the Cleveland area, I am asking for some help. Anyone with contacts at the surrounding high schools is asked to email or call me. I am attempting to generate a list of schools that would like to participate in the Trig Star program. Your help is greatly appreciated.

Chris Tomko
Education Trustee
ctomko@rewarner.com
440-773-4677



Officer Nominations

Nominations are still needed for 2011 chapter officers. Any nominations will be verified with the individuals before being placed on the ballot. Being a chapter officer is a great opportunity to become more involved and help shape the future of Surveying. Thank you for your interest in maintaining a high level of professionalism in our organization!

Dino Lustri P.S., P.E.,
dino@dlengineeringllc.com



Survey Discs **Collection #1 \$100** **Collection #2 (1 DVD or 4 CDs) \$25**
Scholarship Fundraiser (Proceeds from donation amounts go to the chapter's scholarships)

Disc 1 of Scanned Surveys

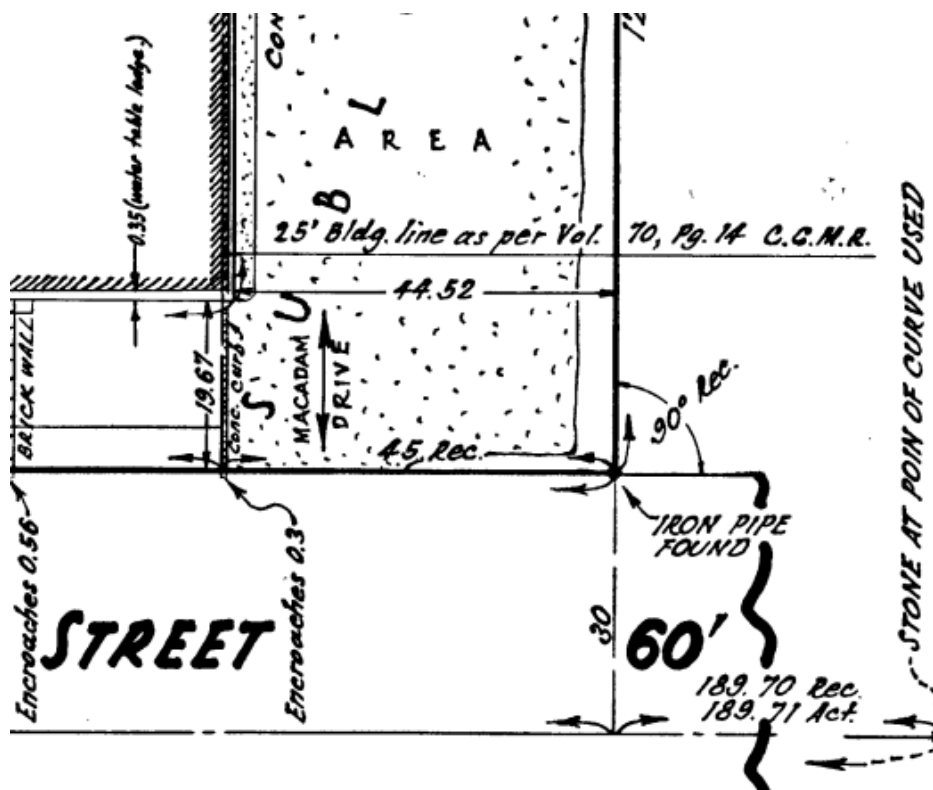
Approximately 7,000 larger surveys (stored in flat files) were scanned in 1999 in part for preservation because the document storage location at the time was not very well protected against weather extremes.

Disc 2 of Scanned Surveys

In 2004, about 2,700 folded surveys were scanned in 2005. These surveys vary in size and also include unrecorded subdivision and some county road records.

Available only to PLSO Members.

Questions or want to obtain the discs? Call or email [Robert Hoy](#)



Random Lines

by John E. Dailey, P.S.

Anybody that knows me knows that I am a real bug on **Survey Safety**. I have preached safety everywhere I go and sometimes it falls on deaf ears. On September 30 at about 2:00 P.M., a survey crew was working in the center of Pearl Road between Smith Road and Bagley Road in Middleburgh Heights. They had no signs, no cones, no flags, not even safety vests.

It makes you wonder just how stupid people can be. Maybe this crew did not want to go home safely that night.

There is a movement afoot (again) on the national scene to separate the National Society of Professional Surveyors (NSPS) from the American Congress on Surveying and Mapping (ACSM). NSPS is currently a Member Organization of ACSM, along with the Cartographic and Geographic Information Society (CaGIS), the Geographic and Land Information Society (GLIS) and the American Association for Geodetic Surveying (AAGS). Together they form the basis of the Geo-spatial-Data professions. NSPS is also responsible for the NSPS Foundation, a separate non-profit foundation for educational and humane purposes.

This movement towards separation comes up every few years because certain leaders of NSPS (those who attend national meetings) feel that they are being put upon by the other, smaller MO's. To a point, this is true. NSPS is the major MO with about 70% of the membership and therefore over 70% of the dues income.

Some of the leadership feel that being the largest should give them the greatest say in how things are done. They seem to have forgotten that in a democracy, everyone should have a say and should be treated equally. So feeling that they are being imposed upon, they will attempt to take their toys and go home.

ACSM as a whole and NSPS in particular, have been losing members over the past 25 years or so, mainly due to the growth and improvement of the state societies. This could indicate a feeling among the surveyors that local is better. This also shows that many surveyors do not understand that what is happening nationwide will eventually affect them. What affects surveyors anywhere in the country will affect you locally in the near future.

If we, all the practitioners within the overall geo-spatial community do not stand together, we will lose our franchise to earn a living in the future.

We are in a quickly changing profession with many of our old talents phased out and our beliefs of who we

Cleveland Surveying News - November 2010

are and what we do will no longer be valid. If you expect to continue as a boundary surveyor only, you will starve. The technology of our profession is changing. Information can be gathered with high speed laser imaging. Many counties are putting fairly good GIS program up on line. Contractors are using GPS machine control. Utility companies are using non-professionals with GPS rovers to gather information. "Google Earth" is not necessarily the friend of the surveyor.



John E. Dailey

Our profession and the possibilities of new areas of business are much different than they were only 10 years ago. We as practitioners must change with the times. This is not the time to drive a wedge between surveyors and the other "geo-spatial" professions. This is the time to work more closely than ever.

To quote Robert Foster in POB Magazine,

"Even allowing for the current recession, it is clear that all the attempts of ACSM and NSPS to reinvent themselves have done little to build the membership to include a respectable portion of the U.S. surveying universe. Perhaps it is because we have been moving in the wrong direction. Instead of separating ourselves from each other--the NSPS surveyors from the AAGS surveyors; the land information specialists of NSPS from the land information specialists of GLIS and CaGIS; and the boundary surveyors from the engineering surveyors--maybe we ought to recognize that surveying is a broad field rather than an assortment of silos. We will only achieve a survivable and significant strength of numbers when we 'break down the silos.'"

Well said, Robert.

On a more personal note, the NSPS leadership recently sent out a questionnaire to their members asking nine questions. Any answer given could be slanted in specific ways to meet the desires of the questioner. I am happy to see this one because I sent out a similar questionnaire that did the same thing in 1992 when NSPS as moving toward incorporation under the corporate umbrella of ACSM. I was severely vilified at that time for the make up of the survey questions. I am happy to see someone else in that position now so that they may take the flak that I did and maybe my questionnaire will be forgotten.

John E. Dailey, P.S., Past
idaileye@sbcglobal.net



The 2010 Issue 2 of the *Cleveland Land Surveyor* has started mailing to municipalities, villages, and townships within Cuyahoga and Lorain counties. This is the fourth issue in all so far.

I've now received payments from all advertisers. Thanks to all that have contributed to help the CSN have another strong year. The next issue will come out mid-January. My biggest challenge for next year will be finding the next Communication Trustee that can put in a solid effort to continue publishing the CSN to high standards. I plan to run for chapter President-Elect in 2011.



Robert Hoy
Communication
Trustee

Communication

Talk with Professional Engineer colleagues of yours about our upcoming Annual Conference in Cleveland this coming February. We carefully chose session topics that have an appeal to both Surveyors *and* Engineers. Topics with dual appeal:

- Working with NEORS
- Alternative Energy & Zoning
- Copyright for Surveyors & Engineers
- Embrace and Thrive with Machine Guidance Technology - engineers are increasingly being asked for CAD files to upload into automated earth movers.

Our conference is a great opportunity for Professional Engineers to get a different flavor of Continuing Education!

Jake's Stakes

AMISH MADE

8200 Camp Road Homerville, Ohio

SURVEYING and CONSTRUCTION STAKES

High quality, light colored, HARDWOOD and smooth

MARKER STAKES		Bundle of 50
18" x 1 5/8"	1/2"	\$0.18 ea
24" x 1 5/8"	1/2"	\$0.20 ea
30" x 1 5/8"	1/2"	\$0.25 ea
36" x 1 1/2"	7/16"	\$0.28 ea
48" x 1 1/2"	7/16"	\$0.36 ea
48" x 7/8"	1/2"	\$0.24 ea

SQUARE HUBS	Bundle of 25
12" x 2" x 2"	\$0.24 ea
18" x 2" x 2"	\$0.32 ea
22" x 2" x 2"	\$0.36 ea

WEDGES HUBS		Bundle of 50
22" HUB MARKER	\$0.13 ea	Bundle of 100
9"	\$0.13 ea	
12"	\$0.15 ea	

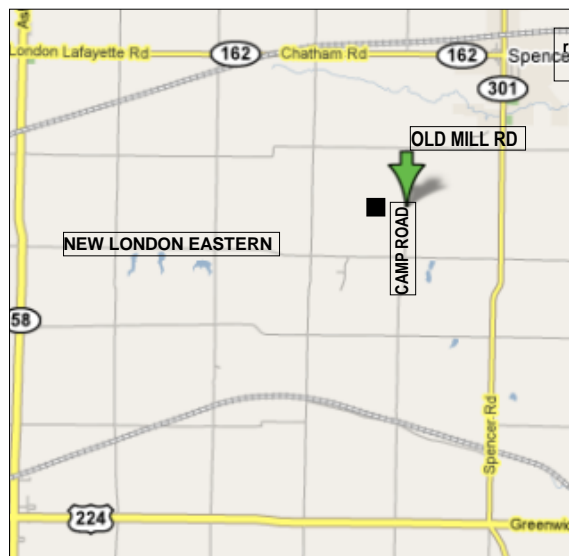
METAL REBAR RODS

Available Any Length Call for \$

■ **NO ORDER TOO**
■ **SMALL or TOO**
■ **FAR**
■ **LARGE INVENTORY**
■

**ORDERS FILLED
RAPIDLY!**

**FREE DELIVERY ON
LARGE ORDERS**



IF WE DON'T HAVE IT - WE MAKE IT!

DELIVERY AVAILABLE : CALL Dwight at Spencer Feed & Supply 330-648-2111

*** WE DELIVER ANYWHERE * WE DELIVER ANYWHERE * Fax Orders: Attn. Dwight 330-648-2552**

Delegate Report [\(Cont'd from Page 10\)](#)

At the annual convention there were two items that were paid by cash that exceeded the limited. PLSO had to return the cash.

7.2 Newsletter Editor: Melinda Gilpin reported that the next newsletter will be sent to print October 11, 2010.

7.41 Program: Fall seminar was expected to have 245-250 attendees.

8.0 Chapter Delegates gave either verbal or written reports.

9.0 President Elect's Report: Brett Tieben reported that since there is only one individual for each position there will be *no ballot*.

12.0 Motion to Adjourn at 7:41 P.M

Respectfully Submitted

George A. Hofmann
Cleveland Chapter Delegate

[Cleveland Surveying News - November 2010](#)

"I can do that job for *less* money!"

I am such a great surveyor (or engineer) that I can charge much less than my competitor. Forget that the value of the service is twice the amount that both of us are so eager to accept. Forget that any accountant would tell us that a fair calculation of operating costs would show the need to charge significantly more. Forget that low fees tempt me to cut corners and not serve my client to the best of my abilities. Forget that only a select few are licensed to provide this professional service in the first place. Forget that I really am a great surveyor, and that I shouldn't be satisfied with rock-bottom fees.

Maybe we great surveyors should start acting like great businessmen!

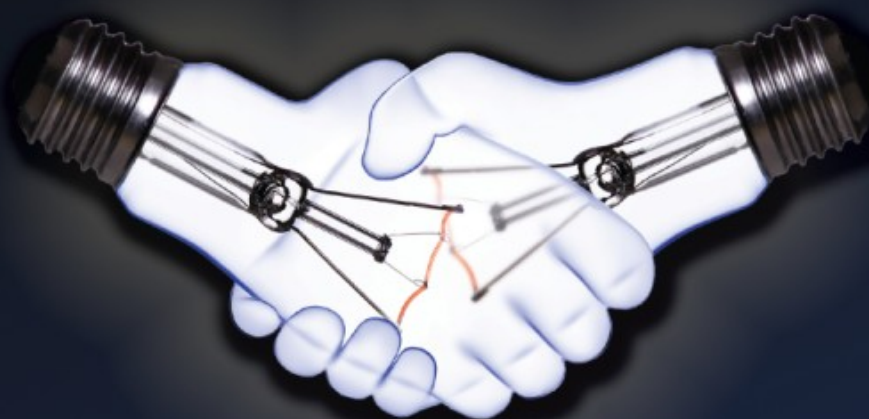
Come to the next PLSO meeting on [November 4th](#) at Cuyahoga County Engineer's Test Lab Facility (3rd floor) and discuss this problem with your peers.

What's this photo about? See the [alert](#) on [Page 18](#)



Photo © Peter D. Zwick

WE HAD A BRIGHT IDEA ...



... WE'VE MERGED.

IMAGINIT **+** **AVATECH**
TECHNOLOGIES SOLUTIONS®

Autodesk design, engineering, and survey solutions.

www.imaginit.rand.com 800.356.9050

BRINGING YOU MORE BRIGHT IDEAS IN MORE PLACES.

ALBANY ALBUQUERQUE ANN ARBOR APPLETON BALTIMORE BOSTON BUFFALO
CEDAR RAPIDS CHARLOTTE CHICAGO CLEVELAND COLUMBUS DALLAS DENVER
DES MOINES DETROIT GRAND RAPIDS GREENSBORO HOUSTON INDIANAPOLIS
KINGSFORD MANCHESTER NEW YORK CITY OMAHA ORLANDO PHOENIX PIQUA
POCATELLO PORTLAND RALEIGH RICHMOND ROLLING MEADOWS SALT LAKE CITY
SEATTLE ST. PAUL SYRACUSE TAMPA TOLEDO VIRGINIA BEACH CALGARY EDMONTON
HALIFAX LONDON REGINA SASKATOON TORONTO VANCOUVER WINNIPEG
MELBOURNE NORTH ADELAIDE KUALA LUMPUR SINGAPORE



CIVIL 3D FOR SURVEYORS

The training you need from IMAGINiT – The Strength behind the Solution

Finally, the survey software and training you've been waiting for.

Your civil engineering department or the firms you survey for have already switched to Civil 3D. Life would be easier, and your time would be more productive, if you could take advantage of it too. We have the class that will take you through the steps of a typical survey workflow: field to finish – designed by surveyors for surveyors. You will receive a certificate that you may use for Professional Development Hours.

Need AutoCAD Civil 3D or Map 3D software? Need help getting started? We've assisted one-man firms and ENR 100 firms, as well as city and county engineers throughout Ohio. With over 100 engineers, surveyors and Autodesk certified instructors, IMAGINiT delivers valuable training and implementation programs designed to empower your team.

Contact Kristen Hannan or Len Horowitz to get started.



TECHNOLOGIES

A RAND Worldwide Company

The largest ATC provider in North America





Authorized Training Center

www.rand.com/imaginitt • Cleveland office: 216-834-8300

Training . Implementation . Software Development . Consulting . Data & Document Management . Asset Management . Design Visualization . Support

2011 Annual Conference - Exhibitors

Calling all Exhibitors!!

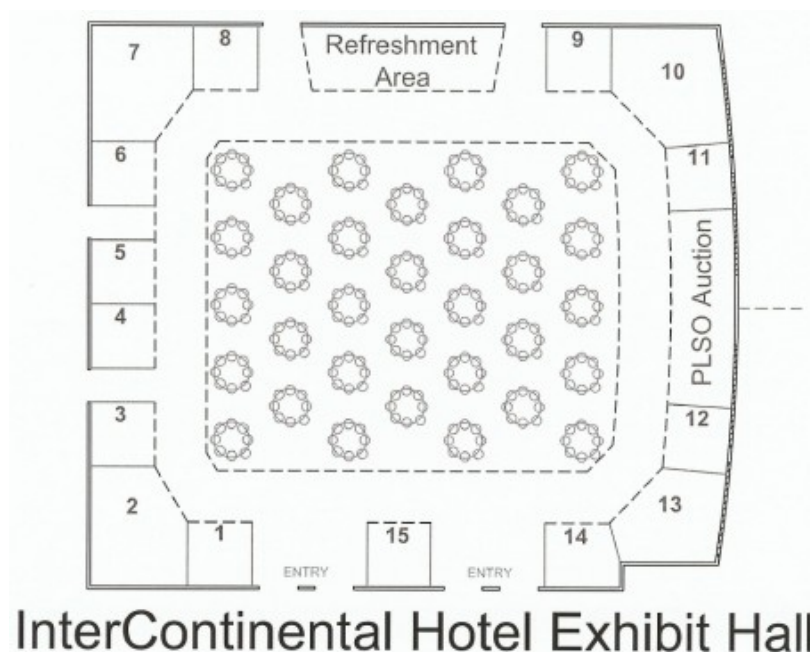
We still have a few booths available for the thirty-sixth PLSO ANNUAL CONFERENCE. This is being held on February 10 and 11, 2011, at the InterContinental Hotel in Cleveland, Ohio.

This conference has a unique setup for Cleveland, that surrounds the dining area with the exhibition booths. Talk about a captive audience!

Don't hesitate and lose out on a great networking opportunity. Contact Barb Jones at plso@ohiosurveyor.org to request an exhibitors application packet or [Click Here](#) for all the exhibit information on the [PLSO website](#).

See you at the Conference

[John J. Bischof P.S.](#)
2011 Exhibits Chairman



CPD Seminar Review

[Cleveland Surveying News - November 2010](#)

October 14, 2010

Cleveland Memory Project & Cleveland State University's Special Collection Library

presented by Bill Barrow, CSU Special Collection Librarian



Timothy Feller
Past President



Bill Barrow

Program Trustee Eric Short dished up a wonderful evening for our October Seminar meeting. The packed house enjoyed pizza, soda and a very interesting and relaxing topic pertaining to the development history of the City of Cleveland and some surrounding municipalities. Bill Barrow is the Special Collections Librarian of Cleveland State University who holds Masters of Art in History from Cleveland State University and Masters of Library Science from Kent State University. Bill's talk was filled with some very interesting anecdotes on how and why some of the original townships were developed.

We were made aware of a number of websites that can be very helpful not only in researching of maps but to also understand what was going on in those founding years. The website clevelandmemory.com contains information and links to various other sites such as railsandtrails.com that contains an enormous amount of information on a number of railroads. The Cleveland Public Library also holds some valuable research information that is available upon request. The only problem I have encountered while viewing these websites, is the lack of time in a day. I can spend hours reviewing photos, maps and stories from all over the state. The next time I start a survey abutting a railroad system this will be my first stop. A special thanks to Bill Barrow for presenting a wonderful evening.

O.U.P.S. Alert

Unfortunately, the Ohio Utility Protection Service now considers "DRIVING SURVEY PINS" to be a regulated type of excavation which is subject to the "Call before you Dig" notification. According to the State law, penetration of the earth more than 12" deep is the regulated activity.

Other types of excavation:

- | | |
|-----------------------|------------------------|
| • Grading | • Trenching |
| • Digging | • Ditching |
| • Dredging | • Drilling |
| • Auguring | • Tunneling |
| • Scraping | • Moving |
| • Wrecking | • Razing |
| • Blasting | • Cable or pipe plowin |
| • Setting poles/pipes | • Driving survey pins |

Above from OUPS' Excavator Manual
Website link: [OUPS Downloads](#)



Therefore, the law requires notification (call 1-800-362-2764) at least 48 hours before driving a 30" long iron pin into the ground! Of course it gets more complicated: Technically, we are required to mark the area with white paint or with white flagging in advance. Of course, this involves a delay, and would require an extra trip to the site.

Before you scoff, and continue with business as usual, be aware that the liabilities are as follows:


- Possible electrocution
- Liability for the costs of repairing the utility, putting out the fire, paying for utility company overtime, etc.
- Legal and other hassles

Who knows, you may have unknowingly already damaged a utility, and will soon be presented with the evidence in the form of your capped iron pin prominently piercing through a hunk of yellow plastic gas line (true story).

Come to the next [PLSO Seminar, a Panel Discussion downtown on November 4th at 6:00 P.M.](#) to learn how your colleagues are dealing with this significant liability, and with other issues that affect our profession.




Proposed Excavating



Aerocon Photogrammetric Services Inc
Dedicated to providing quality photogrammetric services since 1967

- **Aerial Photography**
- **Digital Orthophotography**
- **Digital Topographic Mapping**
- **Analytical Triangulation**
- **DTM/DEM Surface Generation**
- **LIDAR**
- **Airborne GPS**
- **GIS Services**
- **Volumetric Inventories**

4515 Glenbrook Road
Willoughby, OH 44094-8215
440.946.6277
440.946.2646 Fax
e-mail: skymap@aerocon.com
www.aerocon.com



2011 Conference Committee

Chairman	John G. Hoy	jhoy.7419@att.net
Program	Robert Hoy	k666@cox.net
	Peter D. Zwick	
	John G. Hoy	
Exhibits	John Bischof	bischof@cvelimited.com
Facility	Ken Hejduk	kenh@hca-es.com
Benefit/Auction	Michael Straub	mikes@straubsurveying.com
Registration	George Hofmann	george_hm@ameritech.net
Hospitality	Timothy Feller	timf@mcsteen.com

2010 Cleveland Chapter Calendar

Nov 4	Seminar Meeting
Nov 12	State Executive Committee Meeting
Nov 15	Executive Committee Meeting
Nov 22	Cleveland Land Surveyor Deadline
Dec 10	State Executive Committee Meeting (if needed)
Dec 13	Executive Committee Meeting (if needed)
Jan 14	State Executive Committee Meeting

Jan 17	Executive Committee Meeting
Jan 19	Cleveland Surveying News Deadline
Jan 27	Annual Meeting
Feb 7	Executive Committee Meeting (if needed)
Feb 9-11	PLSO Annual Conference , held in Cleveland, Ohio

Executive Committee Meetings:

Parma City Hall at 6 p.m. and are open to all Chapter members who want to attend.

Editor's Notes

[Cleveland Surveying News - November 2010](#)

Cover Photo - Cleveland 2011 Annual Conference

What you're seeing on the cover of this issue is a view in the amphitheater of the Intercontinental Hotel. This room is where *everyone* will be attending the keynote speech to open Thursday's schedule. This room seats 500 comfortably, and has fit 800 people when needed for events the Cleveland Clinic has sponsored. This hotel has 1st class accommodations. Dignitaries and heads of other nations stay in this hotel when they come to the Cleveland Clinic for health procedures (this hotel is connected to the Cleveland Clinic hospital).

The seats in this amphitheater are of the kind you're not accustomed to when attending previous educational happenings. Each seat has a "push to talk" button hooked into the room's state-of-the-art audio visual system for easily being heard when asking questions. The room will have its divider installed during lunch on Thursday.

Spouse/Guest Program is organized differently this year. Make sure you review the official 2011 Conference information for details when it gets posted on www.ohiosurveyor.org

Ohio Utilities Protection Service

Make sure you read the **alert** on [Page 18](#), because O.U.P.S. has published in their *Excavator Manual* that driving "Survey Pins" is an excavation. So you have a reason to state why you are calling O.U.P.S. for an issue like this!

2011 PLSO Annual Conference Cleveland, Ohio Feb. 9-10-11, 2011

T
O
P
I
C
S

Opening Address by Curt Summner: The NSPS Decision

Eric Gakstatter - GPS & GPS Golf Course Surveys ♦ The 2011 ALTA/ACSM Land Title Standards Update ♦ Use of LIDAR in the recent Haiti & Tennessee Disasters ♦ Embracing Machine Guidance Technology ♦ Copyright for Surveyors & Engineers ♦ History of the Cleveland Metropolitan Parks District ♦ The Cleveland Metropolitan Park GIS ♦ Urban Field Safety ♦ 10 Legal Tools every Small Business needs to Survive ♦ CADD: Improving Contours and Map Standards



Sales • Service • Rental • Leasing • Training • Support

We Moved!!

3455 Briarfield Blvd. - Suite D
Maumee, OH 43537

Tel: 800-548-1503

Tel: 419-243-7271

Fax: 419-243-6418



Check our website for directions...
www.cityblueprintoftoledo.com

Executive Committee Meeting Highlights

[Cleveland Surveying News - November 2010](#)

October 18, 2010

Parma City Hall

In attendance: Jack Hoy, John Hoy, Tom Snezek and all officers.

Chapter Delegate: George Hofmann reviewed October 7, 2010 meeting. The proposed 2010-2011 budget was distributed.

Communication: Electronic archiving of the old paper newsletters was proposed.

Education: Chris Tomko reported on the lack of interest in the Trig Star program by local schools. In order to help increase participation, a cash prize will be created.

Program: Topics for discussion at the remaining seminar were reviewed.

Conference Update: John Hoy reported the budget is being finalized. The chapter will donate to the hospitality fund for the 2011 annual conference in Cleveland.

Old Business:

- It was agreed to dismiss the formation of an Ethics/Standards Committee at this time. Instead, a free 3 credit hour CPD seminar on ethics and standards may be offered. This will be open to members and nonmembers.
- John Dailey informed President Straub he is still considering nominations for surveyor of the past.
- The online survey record database was discussed. Dino Lustri is still looking for feedback before proceeding with quotes.

New Business:

Nominees are still needed for the 6 open positions for next years Executive Committee officers.



Michael Ackerman
Secretary



October executive
committee meeting

Executive Committee Meeting Minutes

[Cleveland Surveying News - November 2010](#)

September 13, 2010 Parma City Hall, 6:05 pm.

In attendance: Jack Hoy and all officers except for Chris Tomko and Sean Snezek.

Secretary's minutes: Executive Committee meeting minutes from August accepted as submitted.

Treasury: Written reports for August accepted as submitted. Where to show in the budget, payments donated back from instructors was discussed.

Chapter Delegate: George Hofmann reported on By-law changes
Melinda Gilpin stated that bi-annual renewals will be an option in 2011.



Michael Ackerman
Secretary

Communication:

- Bob Hoy moved the newsletter deadline one week to September 22 and reminded all to submit reports on time.
- The Cleveland Land Surveyor deadline is September 29.
- **MOTION PASSED** for the chapter to purchase an updated version of Microsoft Publisher. The cost is approximately \$140 plus tax.
- A second notice was sent to 3 advertisers who are not up to date with payments.

Education: No report

- Bob Hoy asked how we will recognize this year's scholarship winner. The committee decided to invite the winner to the annual meeting, place a photo and bio in the chapter newsletter and post a press release in the local newspaper.
- Changes were made in the scholarship application form. Place of Birth is to be removed and wording will be changed in references needed from 1 Cleveland PLSO chapter member to any PLSO member in good standing.

Membership: No report. Joe O'Donnell has been reinstated.

Program:

Fall seminars and future locations were discussed.

The speaker from the last seminar donated his payment back to the chapter.

Conference Update: No report. The program is set.

Old Business:

- Updates to the Executive Committee Officer Handbook were approved.
- Jack Hoy informed the Executive Committee the formation of an Ethics/Standards Committee was tried at the state level, but were advised by their lawyers not to create one.
- Dino Lustri handed out a preliminary scope for review on creating the online survey record database.

New Business:

- Online access and notifications will be researched as way to add an extra level of security to chapter bank account. Our current account may not have these features available without fees.
- State PLSO Member of the Year nominations are requested by the end of the year.
- Nominees are needed for next years Executive Committee officers.

Meeting adjourned at 8:25 p.m.

Respectfully submitted
Michael A. Ackerman

2011-2012 Proposed PLSO Budget

[Cleveland Surveying News - November 2010](#)

PLSO FY12 Proposed Budget - Revenue				
Acct #	Sub Acct #	Item Description	FY11 Budget	FY12 Proposed
		<u>Revenue</u>		
1000		Dues	\$135,000.00	\$138,000.00
1100		<u>Member Services</u>		
	1110	Items for Resale		
	1111	Book Sales	\$5,000.00	\$5,000.00
	1112	Educational, P.R. (videos, etc.)	\$100.00	\$0.00
	1113	Miscellaneous Sales	\$600.00	\$300.00
	1150	O.S.N. Advertising	\$8,000.00	\$6,000.00
1500		<u>Education</u>		
	1510	Annual Conference	\$165,000.00	\$145,000.00
	1530	Fall Seminar	\$50,000.00	\$60,000.00
	1550	Refresher Course	\$5,000.00	\$4,000.00
	1570	Workshops		\$6,000.00
	1590	TrigStar	\$500.00	\$500.00
1700		Fundraising Income		
1800		Other Income	\$600.00	\$1,000.00
1900		Checking Interest	\$200.00	\$200.00
		Savings Interest	\$1,000.00	
Total Projected Revenue			\$371,000.00	\$366,000.00
PLSO FY12 Proposed Budget - Expenses				
		<u>Expenses</u>		
3000		<u>Personnel</u>		
	3100	Executive Director Payroll (Includes taxes)	\$65,000.00	\$69,000.00
	3150	Executive Director Expenses	\$4,000.00	\$3,500.00
	3200	Assistant Executive Director Payroll (Incl. taxes)	\$56,000.00	\$59,000.00
	3250	Assistant Executive Director Expenses	\$2,000.00	\$2,000.00
	3300	Administrative Assistant Payroll	\$5,000.00	\$0.00
4000		<u>Administration</u>		
	4100	Rent	\$16,260.00	\$17,000.00
	4200	Telephone	\$2,000.00	\$2,000.00
	4250	Web Site	\$1,500.00	\$1,500.00
	4300	Postage	\$2,500.00	\$3,500.00
	4400	Office Supplies and Maintenance	\$3,000.00	\$3,000.00
	4450	Office Furniture and Equipment	\$1,500.00	\$3,800.00
	4500	Bank and Credit Card Charges	\$5,000.00	\$5,000.00
	4600	Legislative Reference Service (Hannah Report)	\$2,500.00	\$2,500.00
	4700	Insurance	\$3,600.00	\$3,600.00
	4800	Miscellaneous (moving fees, filing fees, etc.)	\$1,140.00	\$500.00
	4900	Legal Consulting	\$3,000.00	\$2,000.00
	4950	Accounting Consultant Fees	\$2,500.00	\$2,500.00
5000		<u>Member Services</u>		
	5100	Certificates and Plaques	\$1,500.00	\$500.00
	5200	Inter-Association Support	\$3,500.00	\$3,500.00
	5300	Printing and Mailing (Ballots and Brochures)	\$3,000.00	\$3,000.00
	5400	Officer Travel Expense	\$4,000.00	\$4,000.00
	5500	OSN Printing and Mailing	\$18,000.00	\$14,000.00
	5600	Member Appreciation Activities	\$2,000.00	\$500.00
	5700	<u>Items for Resale</u>		
	5710	Book Purchase	\$2,500.00	\$2,500.00
	5720	Educational P.R. (videos, etc.)	\$1,000.00	\$0.00
	5730	Miscellaneous Items for Resale	\$1,000.00	\$1,000.00
	5740	Ohio Sales Tax		
6000		<u>Education</u>		
	6100	Annual Conference	\$125,000.00	\$120,000.00
	6200	Fall Seminar	\$30,000.00	\$30,000.00
	6300	Refresher Course	\$2,000.00	\$2,000.00
	6400	Workshops		\$3,600.00
	6500	TrigStar	\$1,000.00	\$1,000.00
7000		<u>Fundraising</u>		
	7100	Transfer to Scholarship Fund		
	7200	Other Fundraising Disbursement		
Total Projected Expenses			\$371,000.00	\$366,000.00

2011 Conference Information

Cleveland Surveying News - November 2010

PLEASE USE SEPARATE FORM FOR EACH REGISTRANT-TYPE OR PRINT NEATLY-COMplete BOTH SIDES. COPY THIS FORM AS NEEDED.



Professional Land Surveyors of Ohio, Inc. 36th Annual Conference February 9 - 11, 2010 InterContinental Hotel Cleveland, Ohio REGISTRATION FORM

Name _____ Last First Middle Initial Name for Badge _____

Company/Employer _____ Bus. Phone () _____

Address _____ Please indicate if this is your ☐ Home or ☐ Office address Home Phone () _____

City/State/Zip _____ Fax Number () _____

Spouse/Guest's Name _____ Name for Badge _____ (if attending Spouse/Guest Program)

Registration (check all that apply) ☐ P.S. ☐ P.E. ☐ S.I. ☐ E.I. ☐ Student (School attending) ☐ Other

PLSO Member? ☐ Yes ☐ No If not a PLSO member, are you a member of another state's surveying society? ☐ Yes ☐ No
Chapter _____ If yes, you are eligible to register at PLSO Member fees. Please indicate one state _____

PLEASE NOTE WHAT YOUR REGISTRATION INCLUDES.		* PLSO Member	Non-Member	Amount
PRINTED HANDOUTS (notebook with printed copies of all session handouts provided by instructors by printing deadline)		\$ 20.00	\$ 25.00	
FULL REGISTRATION (Registered Professional - Licensed P.S. or P.E.) includes Thursday and Friday continental breakfasts, lunches, and breaks, Thursday auction, hospitality area, and admission to Wed. - Fri. technical sessions and exhibits.		\$ 300.00	\$ 460.00	
ONE DAY REGISTRATION (Registered Professional - Licensed P.S. or P.E.) includes continental breakfast, lunch and admission to technical sessions and exhibits for the day(s) indicated.	Thursday	\$ 220.00	\$ 380.00	
	Friday	\$ 220.00	\$ 380.00	
SPOUSE/GUEST REGISTRATION includes all breakfasts and lunches, Thursday auction, and exhibits. (Spouse interest form will be sent to determine activities).		\$ 135.00	\$ 135.00	
TECHNICIAN REGISTRATION (Non-Licensed - Not a P.S. or P.E.) includes continental breakfast, lunch and admission to technical sessions and exhibits for the day(s) indicated.	Thursday	\$ 170.00	\$ 240.00	
	Friday	\$ 170.00	\$ 240.00	
	Three Days	\$ 255.00	\$ 320.00	
STUDENT REGISTRATION (Enrolled in a full-time surveying curriculum) includes breakfast, lunch, breaks and admission to technical sessions and exhibits for the day(s) indicated.	Thursday	\$ 70.00	\$ 95.00	
	Friday	\$ 70.00	\$ 95.00	
	Three Days	\$ 105.00	\$ 130.00	
CANCELLATION POLICY 100% Refund - 30 days prior to date of event 50% Refund - 29 to 10 days prior to date of event No Refund - 9 days prior to date of event		EXTRA MEALS (If NOT included above)		
		Number	Per Person	
		Thursday Lunch		\$ 30.00
		Friday Lunch		\$ 30.00
Payment by check or credit card should accompany the registration form. If necessary, a purchase order or invoice may be used; however, this will NOT guarantee registration until the actual payment is received.		TOTAL EXTRA MEALS		
		**ALL REGISTRATIONS ARE DUE TO THE PLSO OFFICE BY JANUARY 14, 2011		
		GRAND TOTAL		

*Application for membership must be received by January 1, 2011

MAKE CHECKS PAYABLE TO: Professional Land Surveyors of Ohio, Inc.
or

WE ACCEPT: ☐ MasterCard or ☐ Visa (Please check appropriate box)

Card Number

Exp. Date

Name as it appears on card _____

Signature of Cardholder _____

**Registrations received after the deadline are not guaranteed and are subject to availability.

Mail completed form and payment to:
Professional Land Surveyors of Ohio, Inc.
6465 Reflections Drive, Suite 100
Dublin, Ohio 43017-2353
(FAX TO: 614-761-2317
if paying by credit card ONLY)

(614)761-2313 plso@ohiosurveyor.org

REGISTRATIONS MUST BE RECEIVED IN THE OFFICE BY FRIDAY, JANUARY 14, 2011

2011 Conference Information

[Cleveland Surveying News - November 2010](#)

2011 PLSO Annual Conference - Program of Sessions

Please mark your preference for the following topics. Inadequate registration for a particular session may result in cancellation of that session.

TIME		WEDNESDAY, FEBRUARY 19, 2011	
5:00-6:00PM		FREE Wine and Cheese Welcome Reception - Sponsored by The InterContinental Hotel	
Registration: 4:00 P.M.			
		SESSION TOPIC	SPEAKER
6:00 - 9:00 PM		Mapping and Redesigning Golf Courses with GPS (3 PDHs)	Eric Gakstetter
TIME		THURSDAY, FEBRUARY 10, 2011	
Registration: 7:00 A.M.			
Exhibit Hall: 7:00 A.M. - 7:00 P.M.			
		SESSION TOPICS	SPEAKERS
8:00 - 8:30		KEYNOTE ADDRESS - The State of NSPS (.5 PDH)	Curt Sumner
8:45 - 9:45		What's New For GPS in 2011 (Part 1) (1 PDH)	Eric Gakstatter
8:30 - 9:30		State Board of Registration Update and Recent Opinions Review (1 PDH)	John Greenhalge and Frank Snyder
8:45 - 9:45		Exhibitors Informational Sessions (1 PDH)	Various Exhibitors
Break Between Sessions - Please Visit Exhibits			
10:30 - 12:00		What's New For GPS in 2011 (Part 2) (1.5 PDHs)	Eric Gakstatter
10:20 - 11:50		Why Happiness Matters (1.5 PDHs)	Jim Smith
10:20 - 11:50		Exhibitors Informational Sessions (1.5 PDHs)	Various Exhibitors
PLSO Awards Luncheon - Please Visit Exhibits			
1:30 - 3:00		2011 ALTA/ACSM Standards Update (1.5 PDH's)	Curt Sumner
1:45 - 3:15		Working with NEORS (1.5 PDH's)	(Speaker TBA)
1:20 - 2:50		10 Legal Tools Every Small Business Owner Needs to Survive (1.5 PDH's)	Sharon Toerek, Esq.
1:20 - 2:50		Exhibitors Informational Sessions (1.5 PDHs)	Various Exhibitors
Break Between Sessions - Please Visit Exhibits			
3:30 - 5:00		Lidar in Disaster Zones: Tennessee and Haiti (1.5 PDH's)	Kucera Staff
3:20 - 4:50		Professional Partnerships: Sharing Office Space and Support Staff (1.5 PDH's)	David L. Harvey III, Esq.
3:10 - 4:40		Alternative Zoning and Energy (1.5 PDH's)	(Speaker TBA)
5:30 - 7:30		PLSO Benefit Social - Hors D'oeuvres and Cash Bar in Exhibit Hall (Auctions benefit Scholarship Fund and PAC)	
TIME		FRIDAY, FEBRUARY 11, 2011	
Registration: 7:00 A.M.			
Exhibit Hall: 7:00 A.M. - 3:00 P.M.			
		SESSION TOPICS	SPEAKERS
8:00 - 9:30		Cleveland Metroparks Land History (1.5 PDH's)	John Dailey
8:10 - 9:40		Copyright for Surveyors and Engineers (part 1) (1.5 PDHs)	Speaker TBA
8:20 - 9:50		CADD Contours and Map Standards (1.5 PDH's)	ImaginIt
Break Between Sessions Please Visit Exhibits			
10:00 - 11:30		Cleveland Metroparks GIS (1.5 PDHs)	Steven Mather
10:10 - 11:40		Copyright for Surveyors and Engineers (part 2) (1.5 PDHs)	Speaker TBA
10:20 - 11:50		Cleveland Police Department - Urban Area Field Safety (1.5 PDH's)	Jeff Stanczyk
PLSO 2011 Officer Induction Luncheon - Please Visit Exhibits (Exhibits close at 3:15 P.M.)			
1:00 - 2:30		Why Your Company Needs Its Own Internal GIS (1.5 PDHs)	Speaker TBA
1:10 - 2:40		How to Embrace and Thrive with Machine Guidance Technology (1.5 PDHs)	Landmarker Geospatial
1:20 - 2:50		Cleveland Police Department - Urban Area Field Safety (1.5 PDH's)	Jeff Stanczyk
Break Between Sessions Please Visit Exhibits			
3:00 - 4:30		How to Embrace and Thrive with Machine Guidance Technology (1.5 PDHs)	Landmarker Geospatial
3:10 - 4:40		Surveyor Safety Budgeting and Manuals (1.5 PDH's)	Mark Yeager
3:00 - 5:00		Annual Meeting of the Professional Land Surveyors of Ohio, Inc.	

Please note that final determination of what qualifies for CPD credit ultimately lies between the license holder and the State Board of Registration for Professional Engineers and Surveyors.

LODGING: Registrants are responsible for their own room arrangements. The InterContinental Hotel, 9801 Carnegie Ave., Cleveland, has given us a rate of \$119.00 per room per night, plus all applicable city and state taxes, for those individuals making their reservations prior to **January 19, 2011**. Reservations can be made by calling (877) 707-8999 and stating that they are attending the Annual Conference of the Professional Land Surveyors of Ohio to receive the discounted room rate.

PARKING: There is parking available in the parking garage on the corner opposite of the hotel, which is connected by a skywalk to the hotel's 2nd floor entrance. The InterContinental Hotel has also offered a special valet parking rate of \$15 per day, a \$10 discount from their normal fee, that can be charged to your room. Please see the PLSO website for more information.

For Office Use Only: Postmark Date: _____ Amount Paid: _____ Check Number: _____

PLSO 2011 Annual Conference

*Don't miss the upcoming Annual Conference, to be held
Wednesday, Feb. 9—Friday, Feb. 11, 2011 at the
Intercontinental Hotel on the campus of the Cleveland Clinic
Hosted by the Cleveland Chapter of PLSO*

*Classes will be held Wednesday evening
through 5pm Friday.*

Scheduled sessions include:

Wednesday Evening:

- *Free Wine and Cheese Welcome Reception sponsored by the Intercontinental Hotel!*
- *Mapping and Redesigning Golf Courses with GPS with Eric Gakstatter*

HOSPITALITY SPONSORED BY THE CLEVELAND CHAPTER AND MEMBERS

Thursday:

- *Keynote Address on The State of NSPS by Curt Sumner*
- *What's New for GPS in 2011 with Eric Gakstatter*
- *ALTA Standards Update with Curt Sumner*
- *Why Happiness Matters, with Jim Smith*
- *State Board Update and Opinions Discussion*
- *Working with NOERSD*
- *Legal Tools for Small Business with Sharon Toerek*
- *Lidar in the Haiti and Tennessee Natural Disasters with Kucera Staff*

HOSPITALITY SPONSORED BY IMAGINIT TECHNOLOGIES AND THE CLEVELAND CHAPTER AND MEMBERS

Thursday Evening will be the Annual PLSO Benefit Social. Proceeds support the PLSO Scholarship Fund and PLSO PAC.

Friday

- *Cleveland Metroparks History with John Dailey*
- *Cleveland Metroparks GPS with Steven Mather*
- *CADD Contours and Mapping with Imaginit*
- *Copyright Law for Surveyors*
- *Urban Area Field Safety with the Cleveland Police Department*
- *Surveyor Safety Budgets and Manuals with Mark Yeager*
- *How to Embrace and Thrive in Machine Guidance Technology with Landmarker Geospatial*
- *ANNUAL MEETING OF PLSO, INC.*

Watch for optional Friday Evening Events on the website—details will be posted as they become available.

The Annual Banquet will not be held in 2011 at the conference. Instead, awards and officer inductions will be held during the conference luncheons. Scholarship recipients will be recognized at Thursday's Benefit Social.

For more information, check the Education Page on the PLSO web site at www.ohiosurveyor.org

Professional Land Surveyors of Ohio, Inc. 6465 Reflections Drive, Suite 100 Dublin, OH 43017 (614) 761-2313

PLSO Membership Application

Cleveland Surveying News - November 2010

**MEMBERSHIP APPLICATION**

Professional Land Surveyors of Ohio, Inc.
 6465 Reflections Drive, Suite 100, Dublin, OH 43017-2353
 (614)761-2313 Fax (614)761-2317
 (PLEASE PRINT)



Date _____

Name _____ Reg. No. _____

(Mr., Mrs., etc.)

(Last)

(First)

(Initial)

Date of Birth: Mo. _____ Day _____ Year _____ Highest Academic Degree Attained _____

CHECK PREFERRED MAILING ADDRESS
☐

Home _____

Phone No. () _____

Cell No. () _____

Fax No. () _____

Zip Code _____ County _____ E-Mail _____

Employer _____

☐

Bus. Address _____

Phone No. () _____

Cell No. () _____

Fax No. () _____

Zip Code _____ County _____ E-Mail _____

Present surveying or related occupation: _____

Other Professional Registrations(s): _____

Membership in: NSPS _____ ASCE _____ Other _____

MEMBERSHIP (Check applicable categories)**ANNUAL DUES**
(7/1 through 6/30)

- ☐ **PROFESSIONAL MEMBER** - Professional Surveyor in the State of Ohio \$ 145.00 *
- ☐ **ASSOCIATE MEMBER** - Surveyor-Intern \$ 55.00 *
- ☐ **CERTIFIED SURVEY TECHNICIAN MEMBER** - \$ 50.00 *
- (Please provide Certificate Number assigned by NSPS/ACSM _____)
- ☐ **AFFILIATE MEMBER** - A person actively associated with the profession of surveying who does not qualify for one of the above categories \$ 50.00 *
- ☐ **STUDENT MEMBER** - Full-time or part-time student in surveying or geomatics \$ 15.00 *
- Educational Institution _____
- Faculty Member's Printed Name _____
- Faculty Member's Signature _____
- ☐ **SUSTAINING MEMBER** - Any company or person providing materials or services to the surveying profession \$ 100.00 *
- ☐ **CHAPTER MEMBER** \$ _____
- (See the reverse side for chapter and dues information)
- ☐ **INITIATION FEE** \$ 10.00
- (Required for all new members - Not subject to proration)
- ☐ **REINSTATEMENT FEE** \$ 20.00
- (Required for all former members whose membership lapsed - Not subject to proration)

*PRORATING OF DUES: July 1 through December 31 . . . 100% of Annual Dues
 January 1 through June 30 50% of Annual Dues

AMOUNT ENCLOSED \$ _____

Contributions or gifts to Professional Land Surveyors of Ohio, Inc. (PLSO) are not tax deductible as charitable contributions. However, they may be tax deductible as ordinary and necessary business expenses.

Signature of Applicant _____

06/08

Make Checks Payable to: **Professional Land Surveyors of Ohio, Inc. (PLSO)**WE ACCEPT: ☐ MasterCard or ☐ VISA (Please check appropriate box)Card Number Exp. Date

Name as it appears on card _____

Signature of cardholder _____

For Office Use Only:

Rec'd _____

Approved _____

Amount _____

Check # _____

PLSO Membership Application

Cleveland Surveying News - November 2010

As stated in the PLSO Constitution, "...Chapters of PLSO are hereby established to which each member shall belong as indicated by preferred mailing address, or another Chapter of their choice."

Use the following information to determine your Chapter affiliation and dues:

CHAPTER BOUNDARIES BY COUNTY

ASKEGA 4 - Ashtabula 28 - Geauga 43 - Lake	MOHICAN-KILLBUCK VALLEY 3 - Ashland 38 - Holmes 70 - Richland 85 - Wayne	SOUTHWESTERN 1 - Adams 8 - Brown 13 - Clermont 14 - Clinton 24 - Fayette 36 - Highland
CENTRAL OHIO 21 - Delaware 23 - Fairfield 25 - Franklin 42 - Knox 45 - Licking 49 - Madison 65 - Pickaway 80 - Union	MUSKINGUM VALLEY 16 - Coshocton 58 - Morgan 60 - Muskingum 61 - Noble 64 - Perry	THOMAS HUTCHINS 15 - Columbiana 50 - Mahoning 78 - Trumbull
CINCINNATI 9 - Butler 31 - Hamilton 83 - Warren	NORTHWEST OHIO 20 - Defiance 26 - Fulton 35 - Henry 63 - Paulding 69 - Putnam 81 - Van Wert 86 - Williams	TOLEDO 32 - Hancock 48 - Lucas 62 - Ottawa 72 - Sandusky 74 - Seneca 87 - Wood
CLEVELAND 18 - Cuyahoga 47 - Lorain	OHIO VALLEY 7 - Belmont 30 - Guernsey 34 - Harrison 41 - Jefferson 56 - Monroe 84 - Washington	TREATY LANDS 2 - Allen 6 - Auglaize 46 - Logan 54 - Mercer 75 - Shelby
CONGRESS LANDS 17 - Crawford 33 - Hardin 51 - Marion 59 - Morrow 88 - Wyandot	SCIOTO VALLEY 5 - Athens 27 - Gallia 37 - Hocking 40 - Jackson 44 - Lawrence 53 - Meigs 66 - Pike 71 - Ross 73 - Scioto 82 - Vinton	TUSCARAWAS VALLEY 10 - Carroll 76 - Stark 79 - Tuscarawas
FIRELANDS 22 - Erie 39 - Huron		WESTERN RESERVE 52 - Medina 67 - Portage 77 - Summit
MIAMI VALLEY 11 - Champaign 12 - Clark 19 - Darke 29 - Greene 55 - Miami 57 - Montgomery 68 - Preble		STUDENT CHAPTERS 89 - Ohio State University 90 - The University of Akron



CHAPTER DUES BY MEMBERSHIP CATEGORY

(Chapter dues are not subject to proration)

ASKEGA All categories except Student. . . \$10.00 Student. . . \$ 0.00	MOHICAN-KILLBUCK VALLEY Professional. . . \$15.00 Associate. . . \$15.00 Certified Survey Technician. . . \$10.00 Affiliate. . . \$10.00 Sustaining. . . \$25.00 Student. . . \$ 5.00	THOMAS HUTCHINS Professional. . . \$20.00 Associate. . . \$20.00 Certified Survey Technician. . . \$ 0.00 Affiliate. . . \$ 0.00 Sustaining. . . \$ 0.00 Student. . . \$ 0.00
CENTRAL OHIO All categories except Student. . . \$15.00 Student. . . \$ 0.00	MUSKINGUM VALLEY All categories. . . \$ 5.00	TOLEDO Professional. . . \$20.00 Associate. . . \$10.00 Certified Survey Technician. . . \$10.00 Affiliate. . . \$10.00 Sustaining. . . \$25.00 Student. . . \$ 4.00
CINCINNATI Professional. . . \$15.00 Associate. . . \$10.00 Certified Survey Technician. . . \$ 7.00 Affiliate. . . \$ 7.00 Sustaining. . . \$25.00 Student. . . \$ 5.00	NORTHWEST OHIO All categories except Student. . . \$10.00 Student. . . \$ 0.00	TREATY LANDS Professional. . . \$15.00 Associate. . . \$15.00 Certified Survey Technician. . . \$ 5.00 Affiliate. . . \$ 5.00 Sustaining. . . \$ 5.00 Student. . . \$ 5.00
CLEVELAND All categories except Student. . . \$20.00 Student. . . \$ 0.00	OHIO VALLEY All categories. . . \$10.00	TUSCARAWAS VALLEY All categories except Student. . . \$25.00 Student. . . \$ 0.00
CONGRESS LANDS Professional. . . \$20.00 Associate. . . \$15.00 Certified Survey Technician. . . \$ 5.00 Affiliate. . . \$ 5.00 Sustaining. . . \$15.00 Student. . . \$ 5.00	SCIOTO VALLEY Professional. . . \$10.00 Associate. . . \$10.00 Certified Survey Technician. . . \$10.00 Affiliate. . . \$10.00 Sustaining. . . \$25.00 Student. . . \$ 5.00	WESTERN RESERVE Professional. . . \$30.00 Associate. . . \$20.00 Certified Survey Technician. . . \$20.00 Affiliate. . . \$20.00 Sustaining. . . \$45.00 Student. . . \$ 0.00
FIRELANDS All categories. . . \$15.00	SOUTHWESTERN Professional. . . \$15.00 Associate. . . \$10.00 Certified Survey Technician. . . \$10.00 Affiliate. . . \$10.00 Sustaining. . . \$10.00 Student. . . \$ 0.00	OHIO STATE UNIVERSITY Student. . . \$ 5.00
MIAMI VALLEY All categories except Student. . . \$20.00 Student. . . \$ 0.00		THE UNIVERSITY OF AKRON Student. . . \$10.00

07/08