

Cleveland Surveying News

October 2009

- CPD Seminar Oct 1st
Mr. John Greenhalge , 1.5 PHDs
- County Government
Election Alert!
- G.I.S. Updates



Cleveland Chapter of PLSO

**P. O. Box 81713
Cleveland, OH 44181-0713**

Volume 8, Issue 6
Circulation: 215 issues

Editor: Robert Hoy, P.S.
Proof: John G. Hoy, P.S.
Website: Rob Krause, P.S.

2009 Advertising Rates:

Full page: 9.8"h x 7.3"w \$400 yr.
One-half page: 4.8"h x 7.3"w \$200 yr.
One-sixth page: 3"h x 3.6"w \$80 yr.
Single Issue Full Page: \$100

Help Wanted or Position Wanted up to
one-half page is \$30.00 per issue.

Contact: Robert Hoy, k666@cox.net

All photographs © Robert Hoy unless
stated otherwise.

Contents

Meetings

October CPD Seminar Announcement	4
August CPD Review	10
Excom. Meeting Highlights	11
September CPD Review	19

Columns

G.I.S. Layers by Joshua Appleman	7
Random Lines by John Dailey	15

Reports

Communication	3
President's Message	6
Delegate	13
Editor's Notes	14
2011 Conference	16
Secretary - Excom. Meeting Minutes	18

Miscellaneous

County Government Election Alert	8
Survey Discs	8
G.I.S. Updates	18
Chapter Calendar	19

ADVERTISER INDEX

3	Roberts Surveying Supplies	10	Imaginit Technologies
5	Precision Laser & Inst.	12	Leica Geosystems
6	Jake's Stakes	16	Aerocon Photogrammetry
9	Avatech Solutions	17	City Blueprint of Toledo

2009 Executive Committee

President	Timothy J. Feller	440-585-9800	timf@mcsteen.com
President-Elect	Michael A. Straub	440-333-1700	mikes@straubsurveying.com
Past President	Peter D. Zwick	440-235-2729	zwick@eng.ohiocoxmail.com
Treasurer	John J. Bischof	440-439-1999	bischof@cvelimited.com
Secretary	Michael A. Ackerman	216-642-1130 x115	mackerman@dgbassoc.com
Delegate	George A. Hofmann	440-234-5544	george_hm@ameritech.net
Trustees			
Communication	Robert G. Hoy	216-389-7677	k666@cox.net
Education	Robert A. Papotto	440-934-7878	bobpapotto@wideopenwest.com
Program	Eric W. Short	440-366-9618	shorte@windstream.net
Membership	Sean T. Snezek	216-970-0752	sneezeman21@yahoo.com

Communication Report

[Cleveland Surveying News - October 2009](#)



Robert Hoy
Communication
Trustee

I started the year with a wake-up call about how PLSO communicates, and there has been small yet noticeable improvements. We will take a bigger step forward when the new state PLSO website is scheduled to debut at the PLSO Fall Seminar. It is anticipated to be available to the membership by the end of October. I hope this is a first big step to a significant shift in how PLSO communicates and shares information. See the Delegate Report for more details.

Last month issue 1c of the **Cleveland Land Surveyor** was sent to the remaining building departments of Cuyahoga and Lorain counties. This means at the end of this month some municipal building departments will receive their second **CLS** of the year. Please send me an [email](#) if you have an idea on ways our chapter can promote professional land surveying.

This fall I will be running for PLSO Secretary and for Chapter Trustee. We are looking for a couple new officers to run for chapter office. Email President-Elect [Mike Straub](#), chairman of the nominating committee, if you are interested in running for an office or have election questions.

Lastly on the communication theme I recently saw a TV news story about mobile phone security. There are many "apps" or "programs" that can be downloaded for iphones, ipods, smart phones, etc. which have the potential to have spyware imbedded that could allow the spyware *buyer* (yes you can buy spyware designed for mobile phones) to listen to all your voice calls, read all your ingoing and outgoing text messages, and even track your phone's location via the GPS receiver in your phone! Do a little on-line searching and read up for yourselves.

HIGH GRADE HARDWOOD SURVEY STAKES

DELIVERY AVAILABLE

- TOPCON DEALER
- SOKKIA DEALER
- FIELD SUPPLIES
- INSTRUMENT SALES, SERVICE & RENTAL
- GPS TECHNOLOGIES
- FIELD EQUIPMENT



ROBERTS

Surveying Supplies

WWW.ROBERTSSURVEYING.COM

5758 Ridge Road Parma, Ohio 44129

Phone (440) 842-2218

Fax (440) 842-0802

October CPD Seminar

Thursday October 1st

Cost: \$35 PLSO Members, \$60 Non-Members

Speaker: John Greenhalge - 1.5 PDHs

Mr. Greenhalge is the executive director of the Ohio State Board of registration for Surveyors & Engineers www.peps.ohio.gov

Topic: John will speak ethics, CPD, and on topics or questions we provide him with *before* the seminar. Give your State Board questions or issues to be clarified to Program Trustee Eric Short 440-366-9618 or email shorte@windstream.net.
(also visit: www.peps.ohio.gov/ContinuingEducation.aspx for good info)



Eric Short
Program Trustee

Schedule

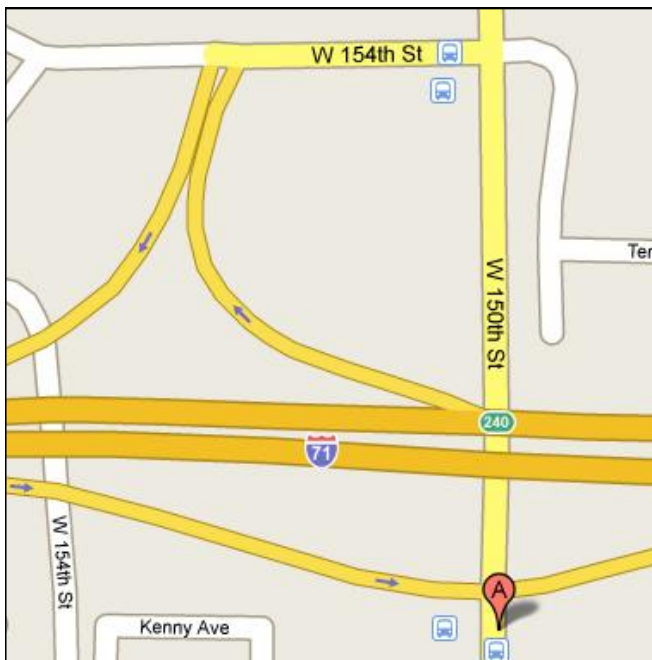
- 5:30 Registration & Socializing
- 6:30 Dinner
- 7:00 President's comments
- 7:05 Speaker

Meal: Roast Sirloin

Marriott Hotel
4277 West 150th St.
Cleveland

FREE PARKING

[Click Here](#) for a full map page to the Marriott.



Make Reservations by
Tuesday September 29

Contact Program Trustee:
Eric Short 440-366-9618
shorte@windstream.net

PLSO Fall Seminar: October 8 & 9

Official seminar information is now available on the PLSO website at:
www.ohiosurveyor.org/seminar.html

Drive in for the day to pick up 8 PDHs,
call some friends and share the ride.

Or stay overnight and attend both days.
The room rate is comparatively reasonable!



Precision Laser & Instrument, Inc.

WWW.LASERINST.COM



**24 Month 0% Interest
Financing Available**



CLEVELAND
888-714-GPS3
CINCINNATI
888-714-GPS2
COLUMBUS
800-714-GPS1
PITTSBURGH
724-266-1600

President's Message

Public pools are all closed, kids are back in school and diminished daylight hours are all sure signs of the end of summer. Oh yes one more thing. Fall Seminars are here again and hopefully everyone has enrolled. The makeup seminar from this past spring was held at the Cuyahoga County Engineers Test Lab Facility. The event was attended by approximately 40 persons with a number of new faces in the crowd. I am not quite sure what stimulated the turnout. It could have been our speakers and their subject, the location and time or possibly the free PDH's and pizza. I would like to hear some feedback. Maybe this should be the way to handle the 2010 spring seminars. Let me know timf@mcsteen.com



Timothy Feller
President

On a side note, how many times have you called a business only to be connected to an automated directory system? Whatever happened to personal service? I have spent countless hours wading through directory options only to discover that the option I need is not an actual option. Frustration mounts when a simple conversation with a human would probably resolve the issue at hand. Can our reliance on technology erode the personal relationship we are striving to develop with our clients? I know I have probably handled more problems by promptly giving a client an answer or the promise of an answer by simply talking to him directly. One's tone of voice and knowledge of the issue at hand can immediately sooth a potential client and sure goes a long way even if that person doesn't become a client. Just a thought as we all struggle to expand our client base.

Timothy Feller, P.S.
Chapter President

Jake's Stakes

AMISH MADE

7370 Camp Road Homerville, Ohio

SURVEYING and CONSTRUCTION STAKES

High quality, light colored, HARDWOOD and smooth

MARKER STAKES

18" x 1 5/8" x 1/2"	Bundle of 50	\$0.18 ea
24" x 1 5/8" x 1/2"		\$0.20 ea
30" x 1 5/8" x 1/2"		\$0.25 ea
36" x 1 1/2" x 7/16"		\$0.28 ea
48" x 1 1/2" x 7/16"		\$0.36 ea
48" x 7/8" x 1/2"		\$0.24 ea

SQUARE HUBS

12" x 2" x 2"	Bundle of 25	\$0.24 ea
18" x 2" x 2"		\$0.32 ea
22" x 2" x 2"		\$0.36 ea

WEDGES HUBS

22" HUB MARKER	Bundle of 50	\$0.13 ea
9"	Bundle of 100	\$0.13 ea
12"		\$0.15 ea

METAL REBAR RODS

30" x 5/8" 20 per bundle Call for \$

■ ■ ■ ■ ■ ■ ■ ■ ■ ■
NO ORDER TOO
SMALL or TOO
FAR
LARGE INVENTORY
 ■ ■ ■ ■ ■ ■ ■ ■ ■ ■

**ORDERS FILLED
RAPIDLY!**

**FREE DELIVERY ON
LARGE ORDERS**



IF WE DON'T HAVE IT - WE MAKE IT!

DELIVERY AVAILABLE : CALL Dwight at Spencer Feed & Supply 330-421-2596

*** WE DELIVER ANYWHERE * WE DELIVER ANYWHERE * WE DELIVER ANYWHERE ***

G.I.S. Layers

By Joshua Appleman, GISP
jappleman@blobinson.com

GIS Data Sources

In my last "GIS Layers" column, I announced ways to become more involved in geographical information systems (GIS) and notified you of upcoming local and regional events that you are invited to attend to learn more about GIS. One of the events included the 2009 Ohio GIS Conference, hosted by the County Engineering Association of Ohio (CEAO). You may have also learned about other GIS opportunities for surveyors during a presentation "New GIS Technologies" at the PLSO Seminar Meeting held earlier this month at the Cleveland Airport Marriott hotel in Cleveland. This month we will briefly cover some of the online GIS Data Sources available to Surveyors. Although the sources online are practically unlimited, general online sources will be discussed.

One local source of GIS data comes from the Ohio Geographically Referenced Information Program (OGRIP). This is a source of public GIS data, including county level Digital Ortho Quarter Quads (DOQQ), Color Infrared (CIR) Imagery, LiDAR data, and Digital Elevations Models (DEM). Additional geographically referenced data is available for download, including road centerlines, address points, landmarks, and railroad crossings. This data is useful for planning purposes and GIS implementation. Depending on software resources, surveyors can utilize this georeference data. You can attend an OGRIP meeting the last Monday of every month at the ODOT headquarters in Columbus, Ohio. For information on downloading this data, visit: ogrip.oit.ohio.gov

The next source is NOAA's National Geodetic Survey (NGS). National Geodetic Survey (NGS) defines and manages a national coordinate system. This network, the National Spatial Reference System (NSRS), provides the foundation for transportation and communication; mapping and charting; and a multitude of scientific and engineering applications. Surveyors can download geodetic control in shapefile format (.shp) with associated datasheet tables. Now useful GIS data in shapefile format can be downloaded by surveyors. You can explore this data source under the Data & Imagery section at www.ngs.noaa.gov.

The National Atlas is a popular source of GIS data which includes a National Atlas Map Maker, where you can assemble, view, and print your own maps. You can choose from hundreds of layers of

[Cleveland Surveying News - October 2009](#)

geographic information to make maps. These dynamic, GIS layers are indexed by categories including: Agriculture, Biology, Boundaries, Climate, Environment, Geology, History, Map Reference, Transportation, and Water. The raw data used to generate maps on this site can be downloaded for free. Vector files are available in Shapefile and SDTS-TVP formats.

National Atlas geostatistical data are in DBF format. Images are GeoTIFF files. Data files are compressed to facilitate delivery on the World Wide Web, so you'll need decompression software. For more information, visit: nationalatlas.com/maplayers.html

Lastly, we will discuss GIS data sources for your surveying operation. The first online data source we will discuss is the ArcGIS Online Services provided by ESRI. ESRI designs and develops one of the world's leading geographic information system (GIS) software technology solutions. ArcGIS Online provides maps and other content for use with ESRI's ArcGIS software. This resource will allow you to share, find, and use GIS content across the Web with the new sharing application. Visitors can access free maps and reference layers including aeriels, streets, topography and shaded relief. This data resource can be used for information, mapping, graphics and planning purposes. Surveyors can take their geographically referenced data and directly overlay their surveying data in a mapping environment. You take a test drive using this data and create an online map at: www.arcgisonline.com/home

I encouraged you to take some time to explore these resources and see how they may fit into the your needs of your organization. Mark your calendar for an upcoming event called **GIS Day** on November 18, 2009. GIS Day provides an international forum for users of geographic information systems (GIS) technology to demonstrate real-world applications that are making a difference in our society. More than 80 countries will participate in holding local events such as corporate open houses, hands-on workshops, community expos, school assemblies, and more.

If you have any questions, you can email me at jappleman@blobinson.com or feel free to call me at (330) 836-8487. I hope you find this information helpful and encourage your feedback.



Joshua Appleman
GISP

County Government Election Alert

Nov. 6, 2009

In both Cuyahoga and Summit Counties, ballots will contain questions that ask voters to choose to eliminate the office of County Engineer as a separate *elected* office. The result in both Counties could be that a County Executive will *appoint* the engineer.

In Summit, the County Executive could eliminate the whole office of the County Engineer, with his duties and powers "transferred" to the Executive. In Cuyahoga, the Executive would directly appoint the County Engineer, instead of direct election by the voters. Certainly, these proposals should be voted down. An elected independent County Engineer who is not beholden to one politician will best serve the citizenry.

In Cuyahoga, the County government scandals have overshadowed this issue, so it's up to us individuals to vote against the changes. In Summit, Alan Brubaker P.E., P.S. will lead the campaign against this; and you can contact him at protectyourvote@sbcglobal.net or at (330) 861-6388.



Peter D. Zwick
Past President

Survey Discs

Disc 1 \$100

Disc 2 (1 DVD or 4 CDs) \$25

Disc 1 of Scanned Surveys

Approximately 7,000 larger surveys (stored in flat files) were scanned in 1999 in part for preservation because the document storage location at the time was not very well protected against weather extremes.

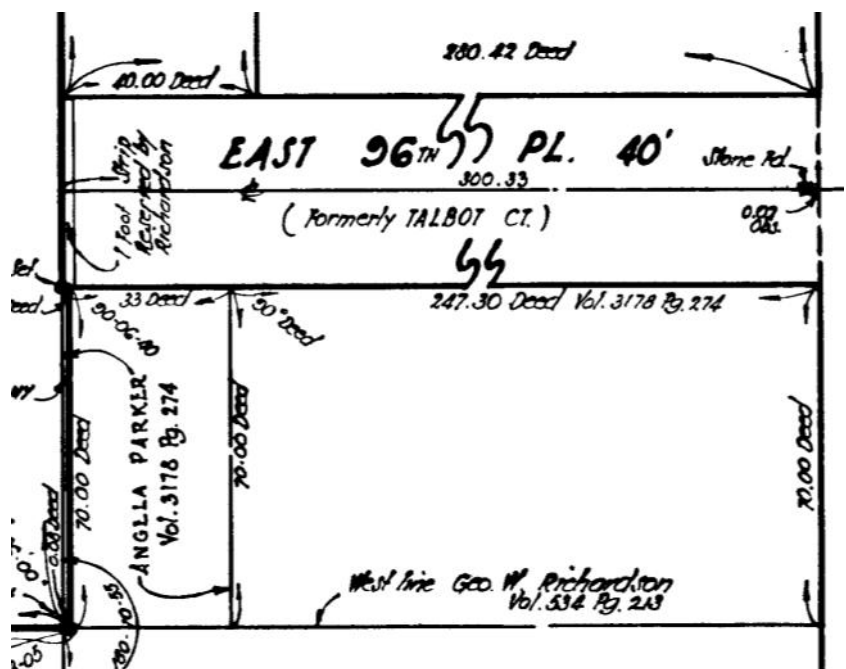
Disc 2 of Scanned Surveys

At the end of 2004, about 2,700 folded surveys were scanned using proceeds from the 2004 Annual Conference the Cleveland Chapter hosted. These surveys vary in size and also include unrecorded subdivision and county road records.

Available to PLSO Members only.

Proceeds from donation amounts for these Survey Discs go to the chapter's scholarships.

Questions or want to obtain the discs?
Call or email [Robert Hoy](mailto:Robert.Hoy@plso.com) 216-389-7677



Autodesk Technology. Avatech Expertise. Better Results.

- Consulting
- Implementation
- Surveying Technologies
- Training and Technical Support
- Software and Custom Development



Technology for the World You Build

- Increase production without additional staff
- Reduce cost, rework, redundancies, and errors
- Proven results to increase your bottom line

What can our solutions do for you?

Call our Cleveland office at **877-717-5600** to find out more.

Leica
Geosystems



AVATECH
SOLUTIONS®

Altogether Smarter Design.

Autodesk®

Authorized Value Added Reseller

www.avatech.com



CIVIL 3D FOR SURVEYORS

The training you need from IMAGINiT – The Strength behind the Solution

Finally, the survey software and training you've been waiting for.

Your civil engineering department or the firms you survey for have already switched to Civil 3D. Life would be easier, and your time would be more productive, if you could take advantage of it too. We have the class that will take you through the steps of a typical survey workflow: field to finish – designed by surveyors for surveyors. You will receive a certificate that you may use for Professional Development Hours.

Need AutoCAD Civil 3D or Map 3D software? Need help getting started? We've assisted one-man firms and ENR 100 firms, as well as city and county engineers throughout Ohio. With over 100 engineers, surveyors and Autodesk certified instructors, IMAGINiT delivers valuable training and implementation programs designed to empower your team.

Contact Kristen Hannan or Len Horowitz to get started.



TECHNOLOGIES

A RAND Worldwide Company

The largest ATC provider in North America





Authorized Training Center

www.rand.com/imaginitt • Cleveland office: 216-834-8300

Training . Implementation . Software Development . Consulting . Data & Document Management . Asset Management . Design Visualization . Support

CPD Seminar Review August 27, 2009 by Peter D. Zwick, P.S., P.E.

The price was right for this free two-hour seminar! Even the pizza was on the house, so the great turnout—attendance at its highest in several years of Cleveland PLSO seminars—was not surprising. If you like this meeting format, then tell our officers how you feel. Many thanks to the Cuyahoga County Engineer for making available his Bridge Garage Classroom Facility at no cost.

Our own Tom Snezek, P.S., began the seminar with an overview of one of the first geodetic surveys accepted by the NGS: Cuyahoga County's Regional Geodetic Survey. Seventy years ago, the C.R.G.S. was envisioned as a regional planning and engineering tool. Jarvis Sweet spearheaded the initial effort in the 1930's before handing-off the torch to Professor of Civil Engineering G. Brooks Earnest, of Case Institute of Technology.



Tom displayed historic reports and showed the audience black-and-white photographs of field crews constructing triangulation towers, observing Polaris, employing plane tables, and using a unique sight rod that incorporated a neon light tube for high visibility over long distances at night. The C.R.G.S. surveyors began working at the recently established USGS monument near the Soldiers and Sailors Monument in downtown Cleveland (NGVD 1929), and extended baselines from there throughout the County. Crews completed the C.R.G.S. in 1958 under County Engineer Albert Porter, who issued the final report titled "Mapping the Region" that same year.

Tom remarked that although the County constantly loses original monuments to new construction, no program or funding exists to replace them. Certainly, all surveyors in the audience were keenly aware of the ongoing loss of monumentation: a frustrating problem.

[\(Continued on Page 11\)](#)

CPD Seminar Review [\(Continued from Page 10\)](#) [Cleveland Surveying News - October 2009](#)



Ohio NGS Representative
Dave Conner

Following Tom's presentation, David Conner of the NGS began by turning to modern developments in surveying, perceptively observing that both Ohio's dense state-wide geodetic control network, *and the expertise of Cleveland's micro-brewers*, are second to none.

A highlight of his portion of the seminar, Dave solicited input on the future of ground-based geodetic monumentation from the 38 gathered PLSO professionals. According to Dave, there is a current debate in the geodetic community on this subject. While a majority of the surveyors in the room seemed most interested in using the monuments (e.g. C.R.G.S.) only for traditional bench mark elevations, the geodesist community wonders whether the cost of establishing and maintaining ground-based monuments is justified. The writing on the wall, Dave concluded, indicates that governmental budget priorities will soon consign new, in-ground monuments to the ash heap of history. Why invest in boring technical infrastructure right inside our communities, anyway?

Dave, whom we now call "Mr. Acronym," discussed GPS-CORS (new 2010 coordinates coming soon), VRS, GNSS, OPUS (soon to cost \$500 per year), and NSRS from the points of view of O.S.U. scientists and NGS geodesists. Like all survey professionals, he recommends understanding the precision of one's measurements, and always checking into physical monuments. He cautioned that Professional Surveyors' expectations of accuracy can exceed greatly those of G.I.S. practitioners.



Did you know that glacial rebound in Cleveland is zero, but in Canada the surface of the earth rises as much as ¼ inch per year? Dave knows.

Executive Committee Meeting highlights

September 14, 2009 Parma City Hall.

In attendance: All officers except Peter Zwick, Robert Papotto, and Sean Snezek.

Secretary's minutes: Executive Committee meeting minutes from August accepted as submitted.

Chapter Delegate: George Hoffman highlighted the September 11 Executive Meeting from Columbus. See [Page 13](#) for his report.

Treasury: John Bischof submitted a written report for August 2009.

Communication: Bob Hoy reviewed upcoming newsletter articles.

Education: Robert Papotto sent a scholarship application review update via email.

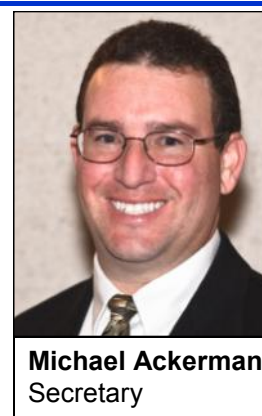
Program: Changes for the cost and location of the 2010 CPD series was discussed.

Old Business:

John Hoy reported we are still waiting for approval from the State Program Committee on the proposed changes before a hotel can be finalized. John said we need to act soon to get better rates.

New Business:

John Dailey offered to donate his time for a 4 hour CPD class.



Michael Ackerman
Secretary

Total solutions from the leader in laser scanning

Leica ScanStation 2 Leica HDS6000

Leica CloudWorx

Leica Cyclone II-TOPO

With Leica Geosystems' market-leading 3D laser scanning technology, success and profitability are within your reach. Are you scanning yet?

■ **Industry's most versatile, popular & fast scanners**

ScanStation 2 is the industry's most versatile, popular and fastest scanner for general topographic, as-built and quantity surveys. For close-range as-builts, nothing beats the compact, ultra-fast Leica HDS6000 phase scanner. Cyclone software drives them both.

■ **Comprehensive, efficient software**

Cyclone™ and CAD plug-in CloudWorx™ are industry standards for quickly processing rich laser scan data into any type of deliverable.

■ **Easy-to-learn**

Leica Geosystems newest High-Definition Surveying™ solutions are field-friendly, CAD tech-friendly, and client-friendly ... making it easier for all to profit.

■ **Industry's broadest support resources**

You not only benefit from Leica Geosystems' deeper staff resources, but also from the scanning industry's largest and most active user network.

For more info, visit www.leica-geosystems.us
or call 1-866-920-2300 x 2374

- when it has to be right

Leica
Geosystems

www.PLSO.com

Delegate Report

[Cleveland Surveying News - October 2009](#)

MEETING AGENDA Friday, September 11, 2009

4.0 Unfinished Business

- 4.1 Surveyor of the Past Plaques - Barb Jones
- 4.2 Website Proposal - Paul Dinan & Melinda Gilpin
- 4.3 Soil Scientists Issues - Dean Frederick
- 4.4 Proposed Removal of PS Requirement for County Engineer - Dean Frederick
- 4.5 Statute of Limitations - Rose Coors
- 4.6 NSPS Boy Scout Jamboree Request - Mike Besch

5.0 New Business

- 5.1 New Members (See Attached List) - Bob Akins
- 5.2 Nominations Committee Interim Report - Rion Myers

6.0 Inter-Association Delegates

- 6.1 CEAO - Dean Ringle
- 6.2 ODOT - Jim Kenyon/Brett Shearer
- 6.3 State Board of Registration - Paul Dinan
- 6.4 OGRIP - Stu Davis

7.0 Committee Reports

- 7.1 Special Committees
 - 7.11 Political Action - Brad Kramer
 - 7.12 Standards - Brad Kramer
 - 7.121 Change in Law Regarding Metes and Bounds
 - 7.122 Monumentation of Railroads
 - 7.123 Preservation of Monumentation
 - 7.124 Minimum Standards for Plat Revision
 - 7.125 GPS Standards - Jim Kenyon
 - 7.126 FEMA Flood Mapping
 - 7.13 State Line - Dean Ringle
 - 7.14 Historic Review - Mike Besch
- 7.2 Newsletter Editor - PLSO Staff
- 7.3 NSPS Governor - Mike Besch
 - 7.31 Trig Star - Paul Dinan
 - 7.32 CST Coordinator - Pat Leonhardt
 - 7.33 Geocaching Coordinator - Bob Akins
- 7.4 Standing Committees
 - 7.41 Program - Bud Payne
 - 7.411 Annual Conference Updates
 - 2009 - Central Ohio - Brad Patridge
 - 2010 - Miami Valley - Brad Kramer
 - 2011 - Cleveland - John Hoy
 - 2012 - Central Ohio
 - 2013 - Cincinnati and Southwestern
 - 7.412 Fall Seminar Updates

- 2009 - Thomas Hutchins - Dan Susany
- 2010 - Firelands - Phil Rosebeck
- 2011 - Tuscarawas Valley - Bob Akins
- 2012 - Toledo - Pat Leonhardt
- 7.42 Membership - Bob Akins
- 7.421 Membership Brochure Draft
- 7.43 Interprofessional Affairs - A. J. Myers
- 7.44 Education - Dean Frederick
- 7.45 Legislation - Melinda Gilpin
- 7.46 Finance - Paul Dinan
- 7.47 Past Presidents Council - Paul Dinan, et al.
- 7.48 Scholarship - Rion Myers
- 7.49 Scholarship Fund Board - Frank Snyder
- 7.50 Management Review - Dean Frederick



George Hofmann
Delegate

8.0 Chapter Delegate Reports

- 8.1 Askega Chapter - Jim Donathan
- 8.2 Central Ohio Chapter - Brad Patridge
- 8.3 Cincinnati Chapter - Bob Heidkamp
- 8.4 Cleveland Chapter - George Hofmann
- 8.5 Congress Lands Chapter - Isaac King
- 8.6 Firelands Chapter - Tim Riley
- 8.7 Miami Valley Chapter - Ray Payne
- 8.8 Mohican-Killbuck Valley Chapter - Jim Kenyon
- 8.9 Muskingum Valley Chapter - Rob Lowe
- 8.10 Northwest Ohio Chapter -
- 8.11 Ohio State University Student Chapter - Jon Link
- 8.12 Ohio Valley Chapter - Larry Gardner
- 8.13 Scioto Valley Chapter - George Seymour
- 8.14 Southwestern Chapter - Rose Coors
- 8.15 The Thomas Hutchins Chapter - John Francis
- 8.16 The Univ. of Akron Student Chapter - Andrew Kis
- 8.17 Toledo Chapter - Tom Silva - Pat Leonhardt
- 8.18 Treaty Lands Chapter - John Jauert
- 8.19 Tuscarawas Valley Chapter - Dave Bodo
- 8.20 Western Reserve Chapter - Jeff Mallison

9.0 President-Elect's Report - Rion Myers

10.0 Executive Director's Report - Melinda Gilpin

11.0 President's Report - Dean Frederick

Executive Committee Meeting - Friday September 11, 2009

Meeting call to order 6:13 P.M.

1.4 Quorum present

2.0 Secretary's minutes for July 2009 were accepted. Minutes for September, 2008 and January 2009 still to be submitted.

3.0 Treasurers report for July and August accepted subject to audit

4.21 Web Site: Major design complete. Working on navigation buttons. Will present new web site at fall seminar, it should be on line at end of October. On line registration for 2010 seminar, on line ballots will be an option. It has been designed so additional components can be added as needed. Will have direct links to chapter sites. PLSO will maintain and update the site

4.3 Soil scientist still being investigated. Keep sending any additional evidence you may have to the State Board. John Greenhalge is forming a group to work directly with the Board of Health

4.4 Removal of PS requirement. Nothing further to report. Dean Frederick reported that Summit County will attempt to have the requirement for both a P.E. & P.S. removed by vote in the next election and have the office of County Engineer become a appointed position. This attempted change has failed twice.

4.5 Statue of Limitations: Rose Coors reported that they have a rough draft and that it will be for surveying only. With the multitude of disciplines in engineering it was decided that it would be to complex to include them.

[\(Continued on Page 14\)](#)

www.PLSO.com

Delegate Report

(Continued from Page 13)

[Cleveland Surveying News - October 2009](#)

4.6 Boy Scout Jamboree: Ohio's donation was noted. All positions have been filled except two positions for college students

5.1 New Members, 3 professional, 5 associate, 1 sustaining. & 3 Reinstatements. Motion Passed.

5.2 Nominating Committee: Nominations were received for all offices. 1 for each office except secretary where they received two nominations. Written nominations are open till Oct. 1.

6.3 State Board of Registration: Board approved 41 applicants for the fundamentals test and 26 for the principals test. Board reviewed letter regarding monuments. No action taken.

7.11 Political Action: Two new donations were received bringing the total balance to \$3,214.85

7.12 Tim Riley submitted letter regarding Huron County Rural Water plans. Plans consist of photo with new water line overlay. No reference to existing monumentation or specifications to find and protect monuments during construction.

7.14 Historic Review: Mike Besch is looking for volunteers to work on this committee. Anyone interested should contact him.

7.2 Newsletter Editor: Latest issue has been sent to the printer. Deadline for next issue November 1st, 2009.

7.3 NSPS Governor: Anyone interested in what is happening at NSPS should go on their web site and read the news and Views column, and the government affairs update on the ACSM web site. An American Military History Show "A Ride Through History" will be presented on Sept. 26th (9-5) and Sept. 27th (9-4) at 16123 Armour St, Alliance, Ohio \$6.50 Adults, \$3.50 children under 12. There are a couple opening left for the trip to Egypt, March 12-21, 2010. Call Mike Besch for details.

7.33 Bob Akins reported on the geocaching monument at his office.

7.41 Bud Payne reported on the upcoming Annual Conferences and Fall Seminar. 2010 Annual Conference will be held at the Cincinnati Netherlands Hilton Feb. 11-13, sponsored by the Miami Valley Chapter. 2009 Fall Seminar will be held Oct. 8-9 at the Metroplex Hotel and Conference Center, sponsored by the Thomas Hutchins Chapter.

7.42 Membership Bob Akins submitted a draft of the proposed membership brochure.

7.44 Education Committee: State Board is evaluating the submittals received from colleges offering surveying programs.

8.0 Both written and oral reports were given by Chapter Delegates

10.0 Executive Directors Report: Melinda Gilpin reported that she has had the opportunity to attend meetings with many of the Chapters. She is continuing monitoring the state for legislature affecting surveying.

12.0 Adjournment 8:56 P.M

Editor's Notes

What's more *Cleveland* than the air show?

I attended the Cleveland Air Show at Burke Lakefront Airport over Labor day weekend for the first time in about 25 years. The weather was great and so was the entertainment, though the quality of which slowly grew as the day progressed. I was impressed at how many people attended the event. Needless to say I got some very good photos.

I heard from someone from Pennsylvania who attended the show though he usually goes to the Pittsburg air show. Pittsburg didn't have their air show due to lack of funding, and he was complaining about the high prices of the Cleveland air show. Go figure.

On the Cover 50 years of military aviation.

At right: Army paratrooper flying the Ohio flag.



RANDOM LINES

by John E. Dailey, P.S.

Well, this CSN deadline slipped by me. I am writing this while in a hotel in Pennsylvania, without the use of my library at home. I wonder how this is going to turn out.

Shirley and I are doing some genealogical research on my family in Elk County, Pennsylvania, and it seems that research for genealogical information is very much like research for survey data. Both are tied to old records, some good and some not so good, and land records play a large part in it.

Land records are the oldest records that were kept, dating back over 4000 years to Mesopotamia and the lands of the "golden triangle", an area we now recognize as downtown Baghdad, Iraq. Land records were important for one very simple reason, taxation. Land means value and value means taxes. How else could the King or the government generate funds needed for everything else? Being so important, these records were accurately kept. Accuracy in this case is a nebulous word. Record keeping that was accurate for the specific time period may not be good today.. What was good record keeping 200 years ago would not make the grade today. Accurate birth records date back only about 200 years and marriage records only about 300 to 500 years. Most of these were kept in either family Bibles or in local church records. Birth and marriage records were not kept by governmental agencies until the 1800's. These may have been interesting but land meant money. Birth records

became more important when the prince or king decided he needed to draft soldiers.

All research requires attention to detail that is the same across the board: correct lines of ownership, direct lines of ancestry, analyzing evidence, sorting out random pieces of information to determine what is the true answer. Actual proven data such as original survey markers and survey lines are fact. Everything else used to determine and prove those points is evidence.

That is no different in genealogy: There is a lot of information to be found in census records, voting records, birth and death records, immigration and naturalization records and marriage records and it is easy to get off on the wrong track. We sometimes follow an incorrect line of people, people whose names are the same or close to the same, but not the right ones. Sounds a little like surveying, doesn't it?

How much research is enough? A good rule of thumb is to gather all the information you think there is, then go back, look again and find what you missed.



John E. Dailey

[John E. Dailey](#), Past

Don't miss the PLSO Fall Seminar: October 8 & 9

Official seminar information is available on the
PLSO website at: www.ohiosurveyor.org/seminar.html

An easy drive from Cleveland.

2011 Conference Committee Report

On Friday, September 11, 2009 was a Program Committee meeting in Columbus prior to the Executive Committee meeting. At that meeting I presented our proposal for changes to the format of the conference.


Progress was made toward confirming a new format, but the work was not completed. Further communication should finish the process within the next two weeks. This will allow us to shift our efforts to contracting with a hotel and working on the program. We are still considering three hotels: The Cleveland Renaissance, The InterContinental Hotel and The Crown Plaza City Center. We are less than seventeen months until this event.



John G. Hoy, P.S.
2011 Conference
Chairman

Conference committee:

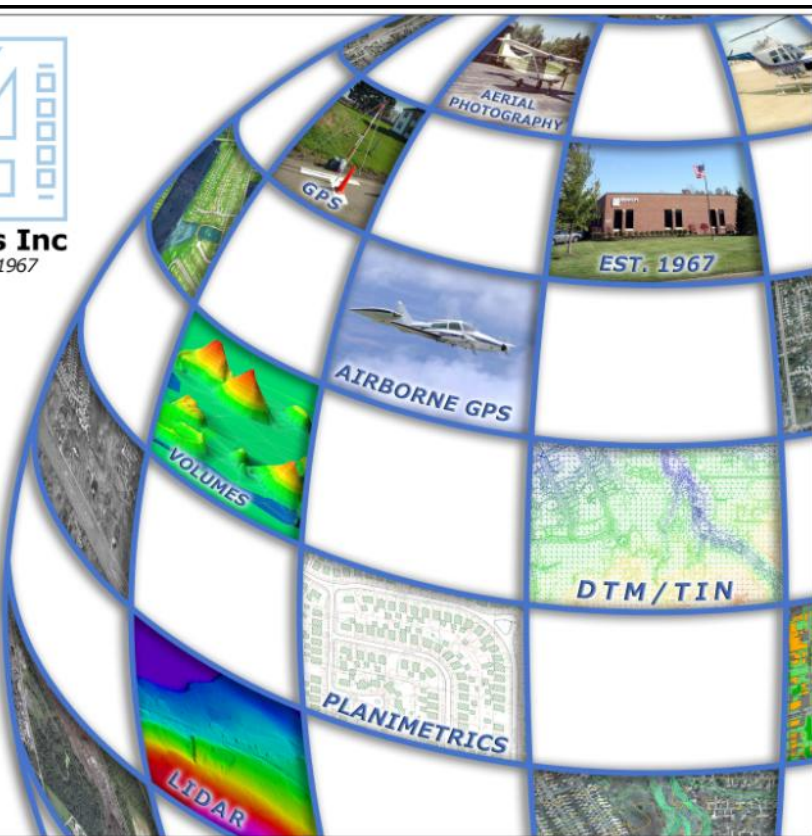
Chairman	John G. Hoy	jhoy.7419@att.net
Program	Robert Hoy	k666@cox.net
Exhibits	John Bischof	bischof@cvelimited.com
Facility	Ken Hejduk	kenh@hca-es.com
Benefit/Auction	Michael Straub	mikes@straubsurveying.com
Registration	Joseph O'Donnell	joeodonnps1@sbcglobal.net
Hospitality	Timothy Feller	timf@mcsteen.com



Aerocon Photogrammetric Services Inc
Dedicated to providing quality photogrammetric services since 1967

- **Aerial Photography**
- **Digital Orthophotography**
- **Digital Topographic Mapping**
- **Analytical Triangulation**
- **DTM/DEM Surface Generation**
- **LIDAR**
- **Airborne GPS**
- **GIS Services**
- **Volumetric Inventories**

4515 Glenbrook Road
Willoughby, OH 44094-8215
440.946.6277
440.946.2646 Fax
e-mail: skymap@aerocon.com
www.aerocon.com



Your
Complete
Source



Sales • Service • Rental • Leasing • Training • Support

 **Trimble**



SOKKIA



SCHONSTEDT
INSTRUMENT COMPANY

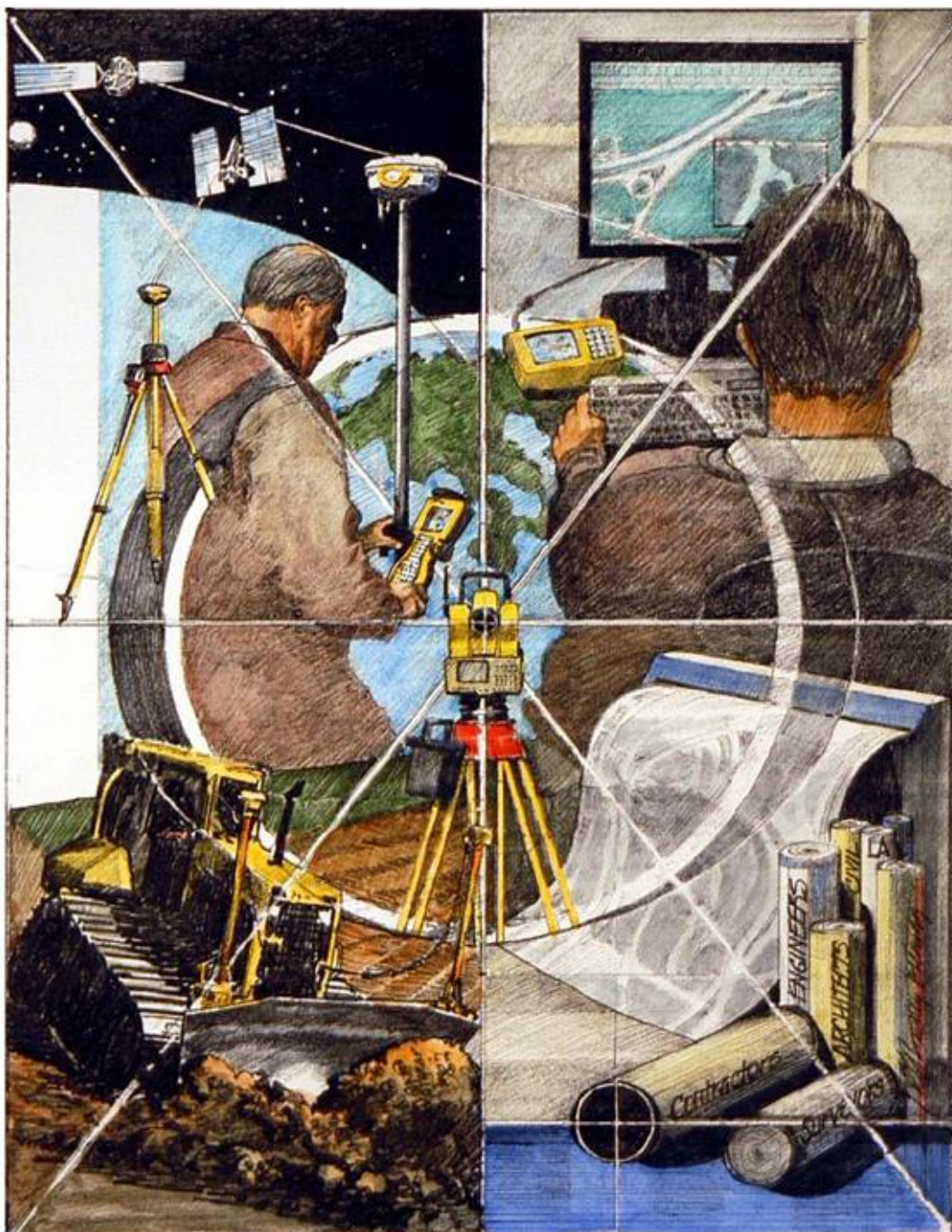
Lufkin®

CRAIN®



ROLATAPE®
CORPORATION

CST



2010 Madison Avenue - Toledo, OH 43604

Tel: (419) 243-7271 Fax: (419) 243-6418 Toll Free: 800-548-1503

E-Mail: cbt@cityblueprintoftoledo.com

www.PLSO.com

Executive Committee Meeting Minutes

[Cleveland Surveying News - October 2009](#)

August 10, 2009 Parma City Hall.

In attendance: All officers, Jack Hoy, John Hoy, Tom Snezek and John Dailey.

Meeting called to order at 6:05 pm

Secretary's minutes: Executive Committee meeting minutes from May accepted as submitted.

Chapter Delegate: George Hoffman reported the issue of illegal surveying was addressed at the July 10 state executive committee meeting. It was brought to the state's attention that AT&T is accepting bids from companies who do not have a Certificate of Authorization to practice Surveying in the State of Ohio. The state is also asking that anybody with information on soil scientist doing survey work submit it to the board.



Michael Ackerman
Secretary

Treasury: John Bischof submitted written reports for May, June and July 2009

Communication: Bob Hoy reviewed the newsletter and advertisers.

Education: Robert Papotto updated the status of the Cleveland PLSO Scholarship and the Trigstar program. The scholarship application form is waiting final review. Cleveland PLSO chapter by-laws will be amended to create the scholarship selection committee.

Membership: New ideas were discussed to increase membership.

Program: Eric Short reminded everyone of the make-up seminar on August 27. The fall session classes are being finalized. A suggestion was made to offer a reduction in price for the upcoming classes.

Old Business:

- John Hoy updated the status of the 2011 Conference. The location has been narrowed to 2 hotels. Changes in the program format have been proposed.

A loss of \$138 was reported from the golf outing, due to a drop in participation.

New Business:

- New ways to promote land surveying were discussed.

The current officers and past presidents have been appointed by President-Elect Mike Straub to be on the nominating committee for the upcoming chapter elections.

Meeting adjourned at 7:36 pm

Respectfully Submitted,
Michael A. Ackerman

G. I. S. Updates

Medina County <http://www.highwayengineer.co.medina.oh.us/cgi-bin/query.cgi>

- A new feature has been added which allows the user to switch the "MapView" between the default Tax-Map and MCDPS Zoning.
- The Planning view and zoning layers are maintained by County Planning.
- The Scanned Image Search page now contains a link which can alert maintenance personnel if a user finds that a downloaded full size scan is unreadable.
- New zoom options allow a user to pick a general area by name from a drop-down box.
- The initial oblique image view incorporates newly resized obliques which allows the page to load 5 times faster. (you can click on the oblique image to view the full size image that takes longer to load).

Cuyahoga County <http://gis.cuyahogacounty.us/>

The mapping refreshes **much** faster and many tax map distances have been added.

CPD Seminar Review September 3, 2009

Bruce L. Robinson Engineering & Surveying Co. presented "New G.I.S. Technologies" for two hours to the usual group of about two dozen local members at the Airport Marriot Hotel who received certificates for one and one-half CPD credits.



Bruce's associate, Joshua Appleman GISP, began the program and immediately grabbed our attention by brandishing a copy of a recorded warranty deed that referenced its point of beginning to handheld GPS waypoint coordinates! Otherwise, Josh feels that the G.I.S. profession would benefit from greater involvement of Professional Surveyors; and that as technology becomes more precise and less expensive, more professional surveyors will participate. He mentioned that ESRI's "Surveyor Starter Kit" now costs \$1,200.

Now, keep in mind that his boss, Bruce Robinson, P.E., P.S. who is one of our own PLSO members, is a guy who refers to 2002 as "a long time ago."

Bruce characterizes G.I.S. as "one more tool" available to us. Bruce explained that the central concept of G.I.S. is the placement and storage of different kinds of information "all under one roof" that is accessible from a computer. He explained the value of G.I.S. this

way: Suppose that a City Engineer desires to set up his construction projects to minimize disruption time, and to avoid digging up the same areas more than once. He needs to excavate to replace all his combined sewers, and he wants to know how many miles of those same roadways also suffer from deficient pavement condition. While he's at it, he should check for any of the work that will take place within riparian setback areas or flood plains that will require special permits. Perhaps he should also check to see whether the Fire Department plans to replace any old hydrants on these same streets. By clicking on the appropriate layers of information, his robust G.I.S. system could allow him to quickly view all the information he needs to answer his questions.

The G.I.S. concept is the counterpart to the traditional format of storing printed copies of all the above information in various file cabinets, manually retrieving reports and drawings, and then organizing and overlaying them as needed. This means that each of us already maintains his own rudimentary G.I.S. within his office files. In his business, Bruce initially utilizes G.I.S. for pre-planning and for preliminary site engineering, then adds more detailed information as his project progresses through the design and construction phases.

Bruce predicted that clients will request survey data in G.I.S. formats more often (especially governmental and corporate clients). The ability to immediately insert data into geographic coordinates will appeal to many types of clients who operate facilities in more than one location. According to Bruce, assuming coordinates of N 5000 and E 5000 will just not cut it in the 21st century !



2009 Cleveland Chapter Calendar

October 1

October 8-9

October 8

October 19

October 21

Seminar Meeting

PLSO Fall Seminar - Girard, Ohio

State Executive Committee Meeting (at Fall Seminar)

Executive Committee Meeting

Cleveland Surveying News Deadline

November 5

November 13

November 16

Seminar Meeting

State Executive Committee Meeting

Executive Committee Meeting

December 11

December 14

State Executive Committee Meeting (if needed)

Executive Committee Meeting (if needed)

January 8

January 11

January 12

January 21

State Executive Committee Meeting

Executive Committee Meeting

Cleveland Surveying News Deadline

Annual Meeting

Executive Committee Meetings

are held at:

Parma City Hall

at 6pm and are open to all Chapter members who want to attend.

I'm out of Stories from the Past Presidents!

Past Chapter Presidents who have not submitted a story, please reminisce over your careers and find a good story to share. Email your stories to the [CSN Editor](#).



September Executive Committee meeting, Parma City Hall