



September 2007

# Cleveland Surveying News



Newsletter of the Cleveland Chapter of the Professional Land Surveyors of Ohio



## Cleveland Surveying News

Circulation: 175 issues

John G. Hoy, P.S. Editor  
Robert G. Hoy, P.S. Photographer

MAILING ADDRESS:



**Cleveland**  
**Chapter of PLSO**

**P. O. Box 81713**  
**Cleveland, OH. 44181-0713**

### 2007 Newsletter Advertising Rates:

**One-sixth page:** 3"h x 3.6"w \$80 yr.  
**One-half page:** 4.5"h x 7.5w \$200 yr.  
**Full page:** \$400 yr.  
  
Single Issue Full Page: \$100  
(accepting only two per issue)

Help Wanted or Position Wanted up to one-half page is \$30.00 per issue.

Contact John G. Hoy [jhoy.7419@att.net](mailto:jhoy.7419@att.net)

### ADVERTISERS INDEX

- 3 [Aerocon Photogrammetry](#)
- 4 [Avatech Solutions](#)
- 6 Jake's Stakes
- 10 [Imaginit Technologies](#)
- 12 [Roberts Surveying Supplies](#)
- 14 [City Blueprint of Toledo](#)

**On the Cover:** I couldn't attend the Golf Outing because of a family vacation at Little St. Simon's Island in Georgia. 10,000 acres of coastal wilderness. Found a survey point anyway. Photos by John (scenery) and Bob (monument) Hoy.

## Contents

Newsletter Information	2
Communication Committee, John G. Hoy	3
Seminar Meeting Registration, Lou Veverka	5
Message from our President, John Bischof	6
June Meeting Review, John G. Hoy	7
Random Lines, John E. Dailey, Past	8
Executive Committee Meeting, Robert G. Hoy	10
Surveying Industry News, Robert G. Hoy	11 & 12
Education Committee, Tom Snezek	
Field Technician Seminar Registration	13
PLSO Business Seminar	15
2008 Conference Report, Mark Yeager	16
Calendar	17
Membership Committee, Tim Feller - No Report	
Chapter Delegate, Sean Boland - No Report	

### 2007 Executive Committee

#### President

John J. Bischof  
[Bischof@cvelimited.com](mailto:Bischof@cvelimited.com)  
(440) 439-1999

#### President Elect

Peter D. Zwick  
[Zwick@eng.ohiocoxmail.com](mailto:Zwick@eng.ohiocoxmail.com)  
(440) 235-2729

#### Past President

Joseph F. O'Donnell, Jr.  
[Joe.O'donnell@lakewoodoh.net](mailto:Joe.O'donnell@lakewoodoh.net)  
(216) 529-6809

#### Treasurer

David J. Bruckner  
[dbruckner@city.cleveland.oh.us](mailto:dbruckner@city.cleveland.oh.us)  
(216) 664-2462

#### Secretary

Robert G. Hoy  
[k666@cox.net](mailto:k666@cox.net)

#### Chapter Delegate

Sean A. Boland  
[Saboland@gmail.com](mailto:Saboland@gmail.com)  
(440) 835-5632

#### Communication

John G. Hoy  
[Jhoy.7419@att.net](mailto:Jhoy.7419@att.net)  
(216) 476-3600

#### Education

Tom Snezek  
[dadsurv@aol.com](mailto:dadsurv@aol.com)  
(216) 671-4902

#### Program

Louise Veverka  
[Lvsurvey@sbcglobal.net](mailto:Lvsurvey@sbcglobal.net)  
(216) 251-6972

#### Membership

Timothy Feller  
[timf@mcsteen.com](mailto:timf@mcsteen.com)  
(440) 585-9800

**Its not the heat, it's the humidity.** Could it be any hotter and drier? Well, yes. I just returned from a reunion in Augusta, Georgia. The temperature was 106° and a heat index of 116°. Down there a cold front coming through makes the humidity drop from 75% to 50%. The temperature doesn't change, just the humidity.

I know that hot dry spells can affect field work. The crew works a little slower to compensate for the conditions. I keep in touch with people who have their ear to the ground concerning the surveying community. Several of the larger engineering / surveying firms in our area are slowing down to the point of laying off personnel. That's not a good sign during the usually busy summer season. This reflection of the US economy will affect everyone to some extent.

The Annual PLSO Memorial William J. Haas Golf Tournament enjoyed beautiful weather. Attendance was shy by three foursomes and donations were down causing a loss of about \$300.00. Everyone had a good time and considering the \$300.00 profit last year it's a success.

The PLSO Summer Seminar in Sandusky was not very successful. Attendance was planned for a minimum of 150 but they reached only about half of that number. The actual loss is still being calculated. The PLSO Business Seminar is September 24 in Columbus. See page 15. The PLSO Fall Seminar is October 25 in Newark.

Our Chapter is continuing the Seminar Meeting schedule through the fall. Anyone who works with AutoCAD (and who doesn't) will reap the benefits of these three diner meetings. Not to mention the CPD hours. See pages 4 and 9 for complete information.

See you September 6th.



**John G. Hoy**  
Communication Trustee  
CSN Editor

# AEROCON

**Aerocon Photogrammetric Services Inc**  
*Dedicated to providing quality photogrammetric services since 1967*

- **Aerial Photography**
- **Digital Orthophotography**
- **Digital Topographic Mapping**
- **Analytical Triangulation**
- **DTM/DEM Surface Generation**
- **LIDAR**
- **Airborne GPS**
- **GIS Services**
- **Volumetric Inventories**

4515 Glenbrook Road  
Willoughby, OH 44094-8215  
440.946.6277  
440.946.2646 Fax  
e-mail: [skymap@aerocon.com](mailto:skymap@aerocon.com)  
[www.aerocon.com](http://www.aerocon.com)







# Autodesk Technology. Avatech Expertise. Better Results.



- Consulting
- Implementation
- Surveying Technologies
- Training and Technical Support
- Software and Custom Development

## Technology for the World You Build

- Increase production without additional staff
- Reduce cost, rework, redundancies, and errors
- Proven results to increase your bottom line

### What can our solutions do for you?

Call our Cleveland office at **877-717-5600** to find out more.



**AVATECH**  
SOLUTIONS®

Altogether Smarter Design.

**Autodesk**  
Authorized Value Added Reseller

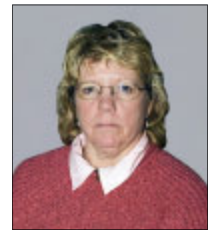
[www.avatech.com](http://www.avatech.com)

## REGISTRATIONS ARE REQUIRED IN ADVANCE

To Register for the next meeting on Thursday, Sept. 6, 2007 contact:

**Louise Veverka at (216) 251-6972**

**Subscriptions must be paid in advance  
and are due by Friday, August 31, 2007**



**Louise Veverka**  
Program Trustee

## EARN ONE PDH OF CONTINUING PROFESSIONAL DEVELOPMENT AT EACH MEETING

To join P.L.S.O. and qualify for the discount, download the form from [www.ohiosurveyor.org/join.html](http://www.ohiosurveyor.org/join.html). If you have any questions about joining contact Barb Jones at (614) 761-2313.

### Dinner menu for September 6, 2007:

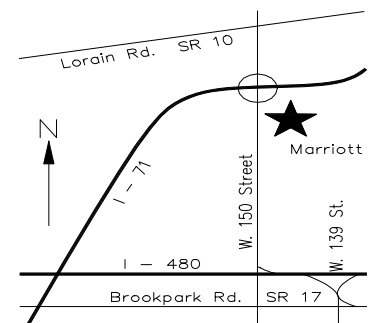
Marriott House Salad  
Stuffed Chicken Breast Angelo with Artichoke and Olives  
Roasted Redskin Potatoes, Green Bean Amandine  
Baked Rolls and butter  
Coffee, Decaf Coffee, Tea, Herbal Tea, Iced Tea or milk  
Carrot Cake

Social time in the lounge at 5:30 p.m., Dinner/Meeting at 6:00 p.m.



**Cleveland Airport Marriott Hotel**  
4277 West 150th Street  
Cleveland

### FREE PARKING



## SEMINAR MEETING REGISTRATION

- ☐ **Sept. 6** **Preparing Electronic Files for Clients/Consultants**
- ☐ **Oct. 4** **The 1, 2, 3's of Creating Effective Libraries**
- ☐ **Nov. 1** **Every Good Design Begins with a Solid Foundation**

Cost for each Seminar: **PLSO Members \$35.00 Non-Members \$60.00**

☐ **Special Subscription Rate, all three Seminars for PLSO Members: \$90.00**

**Amount Enclosed: \$ \_\_\_\_\_**

Name \_\_\_\_\_ Phone Number \_\_\_\_\_

Email \_\_\_\_\_ Address \_\_\_\_\_

Company \_\_\_\_\_ PLSO Member ? ☐ Yes ☐ No\*

Make checks payable to: **Cleveland Chapter of PLSO**  
**P.O. Box 81713**  
**Cleveland, OH. 44181**

Registration is required in advance.

\* to join PLSO and qualify for the discount, apply without delay at [www.ohiosurveyor.org/join.html](http://www.ohiosurveyor.org/join.html)

Dear Members,

It is mid August and soon the leaves will be changing and autumn will be here before we know it. This time of year also signals the restart of our CPD sessions after the summer break. Be sure to see the signup form in this issue for the sessions that are going to be held at the Marriott Hotel. A good dinner coupled with earning one PDH and the conversations with your fellow Surveyors make this the best bargain in town. Trustee Louise Veverka has scheduled some very informative sessions to broaden your professional knowledge. I look forward to seeing you there.

Trustee Tom Snezek has been working on a replacement program for the former Survey school classes that were discontinued. Tom presented a program of 3 hour classes that will usually be held on Saturdays with the first one scheduled for November, and will cover field operation of a robotic total station.

The intent of these classes will be to offer further instruction for your field personnel. These will not offer CPD credit. The board will be monitoring these sessions closely to see if the membership will support this effort by sending their field personnel for training. Tom presented several ideas for future sessions such as correct performance of level loops, a basic math session, etc. I am sure that Tom would be interested in any ideas that you might have. Look for the flyer in this newsletter and sign up your field crews.

Unfortunately, this year's chapter picnic was cancelled due to a lack of interest or schedule conflicts although the weather that evening was not cooperating anyway. The board is looking for any comments you have regarding continuation of the picnic. If the membership will not support this event, should we look into scheduling something different? Some ideas that I have currently received are a trip

.....Continued on Page 7



# Jake's Stakes

**Amish**  
Custom Made  
Surveying and Construction Stakes

Produced by Jake Shetler  
7370 Camp Road  
Homerville, Ohio 44235

(Our stakes are high quality hardwood smooth for excellent writing surface)

## HARDWOOD STAKE PRICING (Soft wood available upon request)

### Marker Stakes

1-1/2" x 3/8" x 48"	\$0.36 ea.
1" x 1/2" x 48"	\$0.22 ea.
1-1/2" x 3/8" x 36"	\$0.28 ea.
1-5/8" x 1/2" x 30"	\$0.25 ea.
1-5/8" x 1/2" x 24"	\$0.20 ea.
1-5/8" x 1/2" x 18"	\$0.17 ea.

### Hub Stakes

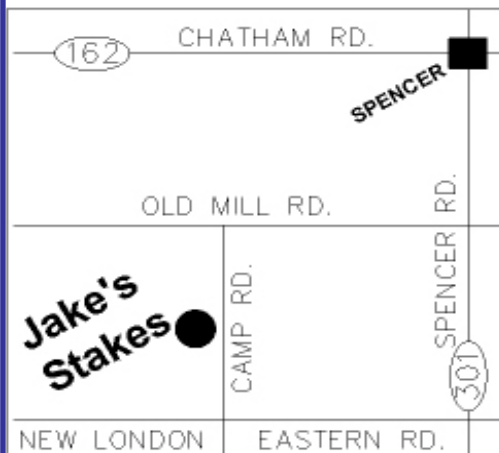
22" Hub Marker	\$0.13 ea.
18" Hub Wedge	\$0.19 ea.
12" Mine Wedge	\$0.30 ea.
12" Hubs	\$0.15 ea.
9" Hubs	\$0.13 ea.

1-1/2" x 1/2" x 15" Form-A-Drain Stake with nail hole	\$0.17 ea.
1-1/2" x 1/2" x 12" Form-A-Drain Stake with nail hole	\$0.14 ea.
5/8" x 30" Reinforcing Rods - Bundle of 20	= \$27.00

Large Stake Inventory - Orders Filled Rapidly  
Delivery Service Available - Pricing Subject to Order Size  
**FREE DELIVERY ON LARGE ORDERS**

Order Placement: Call Dwight Powers at 330-421-2596 or 330-648-2111

Fax Orders: Attention Dwight at 330-648-2552





on the Cuyahoga Valley Railway with a surveying theme or a PLSO day at the Cleveland Zoo. The thought here is to keep a family outing theme with a little surveying thrown in. I would appreciate an email with your thoughts.

The 2008 Conference is rapidly approaching and volunteers are still needed. Contact Mark Yeager or myself if you are able to help out.

This Chapter exists solely for the purpose of the members. We pay dues to belong so that we can access the opportunities that are presented to the membership. PDH seminars, a golf outing, personnel training sessions, a yearly State conference, an informative local chapter newsletter, etc., are just some of the avenues that your board makes available to you. This was the intent when the chapter was originally started and continues on today. The original Surveyors that started all this, had an idea that has evolved over the years with the input of new members that wanted to take the time to get involved. I often think that the greatest benefit that I get from my dues is meeting with other Surveyors, hearing their experiences, being able to discuss some particular problem, or the ability to talk in person about our profession. This is only possible by attending and supporting the functions. Ask yourself, why are you a member of the PLSO?

Are you getting your money's worth by taking advantage of all or some of the functions that the elected board presents to you?

I look forward to seeing you at our next meeting.

Respectfully,  
John J. Bischof, PS

## MEMBERSHIP MEETING REVIEW

The June 7, 2007 General Membership Meeting is one of the two meetings each year that are not Seminar Meetings. This meeting is our *Education Meeting* where we usually recognize graduates from the Survey School. However, since the survey school was cancelled last year there were no graduates.

Bob Papotto accepted the task of involving the Cleveland Chapter in the TrigStar program for 2007. During the last school year he started the program at Trinity High School in Garfield Heights. The winner of the competition at that



**John G. Hoy**



*Coleen Maher accepts the plaque and prize from Bob Papotto in recognition of winning the TrigStar Competition at Trinity High*

school was Coleen Maher, a 2007 graduate. She attended our meeting with her parents and accepted the TrigStar plaque and the prize provided by our Chapter. Dr. Thomas Maher, the executive principal of Trinity High School, also addressed our group with details of the innovative programs the school will be offering this fall. Their program is creating pre-professional internships in which students shadow professionals and experience real world employment. The students actually work in real employment environments including AutoCad internships. This program helps students pay for their schooling.

Our meeting was also attended by PLSO President Bradley J. Kramer.  
.....continued on Page 16

I have always liked the Newburgh area of Cleveland, not only because I grew up there but because of its history. Newburgh, a township south of Cleveland, was an early population and economic center for the area. Bounded by Cleveland on the north, Warrensville Township on the east, Independence on the south and the Cuyahoga River on the west, it was on higher ground than Cleveland and could avoid some of the outbreaks of malaria that hampered the growth of early Cleveland. In the early 1800's, Newburgh was much larger than Cleveland, boasting 10 families and was actually a city before Cleveland..



The first flour mill in Cuyahoga County was built around 1899 at the falls at Mill Creek. There is now a Cleveland Metro Park site commemorating this fact, but the falls of today are not where they were in 1799. It seems the falls were moved due to railroad construction in the area. The main coach road between Cleveland and Pittsburgh ran through this area. It is now called Broadway.

The Cleveland Rolling Mill was built in the area in 1857 and quickly became one of the largest companies in Ohio. This mill probably did more to change the ethnic composition of northeast Ohio than anything else. The original New England mill workers were replaced by Welsh iron workers, then they were replaced by Irish immigrants, then the Irish were replaced by Polish and Czech mill workers.

Newburgh was in the running to become the Cuyahoga County seat because of its greater population and healthier climate, but its hopes were dashed in 1809 when Cleveland was chosen because of its location as a port and its political clout. Poor Newburgh never recovered. Parts of Newburgh was annexed to the City of Cleveland in 1823, 1873, 1878 1893 and 1894. Other sections became Newburgh Heights and Garfield Heights. The final vestige of the City of Newburgh disappeared when the old City Hall was demolished in the 1970's.

Today, old Newburgh is remembered only by historians and genealogists who track their family roots there. It now makes up Cleveland Wards 2 and 12 and is just a shadow of its former glory.

Now, let me shift gears from history to today.

There have to be some really stupid surveyors and survey crews working in our area. On July 3, I was traveling on Day Drive in Parma, just south of Parmatown Shopping center. A survey crew was doing some work on the now vacant Tops store on the south side of Day Drive. A crew member was doing some location work in Day Drive. So far, not too bad.

This fool was dashing in and out of heavy traffic with the range (prism) pole without even a cone or sign nearby and was not even wearing a safety vest.

Traffic was too heavy for me to look around and find the vehicle, which was probably not marked anyway, or to get over to talk some sense to the rod person. This person obviously has had absolutely no safety training or forgot what he learned.

I hope that the person in the street or his boss reads this and makes some sense out of it. We work in a dangerous profession and we will be seriously injured or killed if we are not alert and careful at all times. Use some common sense. Use the safety equipment that is available. Do not take stupid risks, Go home safe at night.

[John E. Dailey, Past](#)





## Cynthia L. Dunn of CCAD inc.

Cindy Dunn has been teaching AutoCAD to engineering and technical professionals since 1986 when she started CCAD inc. By 1993 the face of AutoCAD training changing as more and more students were being integrated into established CAD departments, so CCAD acquired space to conduct AutoCAD training. Although classes held at CCAD frequently include students from different companies, the emphasis on personalized, practical training hasn't changed. Classes typically consist of 2-6 students and materials designed by Cindy address a variety of engineering disciplines. Along with her training responsibilities, Cindy maintains the CCAD Web Site and publishes a monthly AutoCAD Tip Sheet to any interested AutoCAD user.

Cindy has a BS in Industrial Design from Kent State University, has Level 1 & 2 AutoCAD Certification and completed AutoCAD Designer Training in 1994 and Autodesk Visual Basics Training in 1998. She founded the Northeastern Ohio AutoCAD (NORCAD) Users Group in 1988 and served as its Chairperson from 1988 through 1991 and its Newsletter Editor from 1988 through 1994.

Cindy is the presenter for each of the Seminars in the Fall Seminar Subscription:

**September 6, 2007**

### **Preparing Electronic Files for Clients/Consultants Exchanging Files with Little or No Hassle**

More and more organizations are exchanging drawings and documentation electronically. The information may be in its native form or protected in a view only format. This exchange should lead to greater efficiency and productivity, but all too often this is not the case.

A successful exchange depends on choosing the proper file format, access to all linked files and a reliable method of sharing information.

Choosing A File Types – PDF, DWF, DWG

Viewing And Marking Up Files For Clients/Consultants

Managing Linked Files – Fonts, Plot Style Tables, Plotter Configuration, Xrefs, Hyperlinks, OLE

Making The Exchange – Email, CD, FTP Site

**October 4, 2007**

### **The 1, 2, 3's of Creating Effective Libraries**

A little time spent on upfront planning, reaps big time-savings in the long haul.

- Sizing and Scaling Issues
- Insertion Points
- Layer, Color, Linetype, Lineweight Settings
- Blocks vs. Drawings
- Creating Libraries with Tool Palettes

**November 1, 2007**

### **Every Good Design Begins with a Solid Foundation**

Templates save time and promote a professional image.

- Establishing Styles
- Defining Layers
- Adding Sheet Formats
- Saving and Locating Template Files

August 6, 2007 at the office of John R. Hoy and Associates, Inc.

*In attendance:* John Bischof, John Hoy, Pete Zwick, Dave Bruckner,  
Tom Snezek, Bob Hoy.  
Also in attendance: Jack Hoy, John E. Dailey

*Absent:* Tim Feller, Louise Veverka, Sean Boland, Joe O'Donnell



**Robert Hoy**  
Secretary

Ohio SB189, submerged lands, and its surveying related effect was discussed.

Tom Snezek will prepare a flyer for the fall single day education class for the next newsletter.

John Bischof reported for Lou Veverka that one individual will speak at all 3 of our fall seminar meetings.

John also reported that as of today, only 5 reservations had been received for the summer picnic.

John Dailey reported the Chapter Data Bank has been moved to the Cuyahoga County Archives, but the county is still preparing storage and display space for our collection. The Data Bank will not be accessible until they are finished.



**Your software has changed.  
Your clients have new demands.**

**Have you kept up?**

**Your CAD software should support your business goals and meet your design needs.** We can help you fit your Autodesk Civil 3D, Land Desktop and Map 3D software to your workflow – and free up your time to do more surveying and less drafting.

**We've been your source for Autodesk Surveying, Civil Engineering and GIS software for over 20 years** – the right tools for every size survey, mapping and land development project.

**Turn to us for the training, implementation and technical support services that keep you productive.**

***Challenge us – tell us one thing you don't like about your software – and see if we can show you a better way.***

**Offices throughout Ohio**

Phone: 216.834.8326

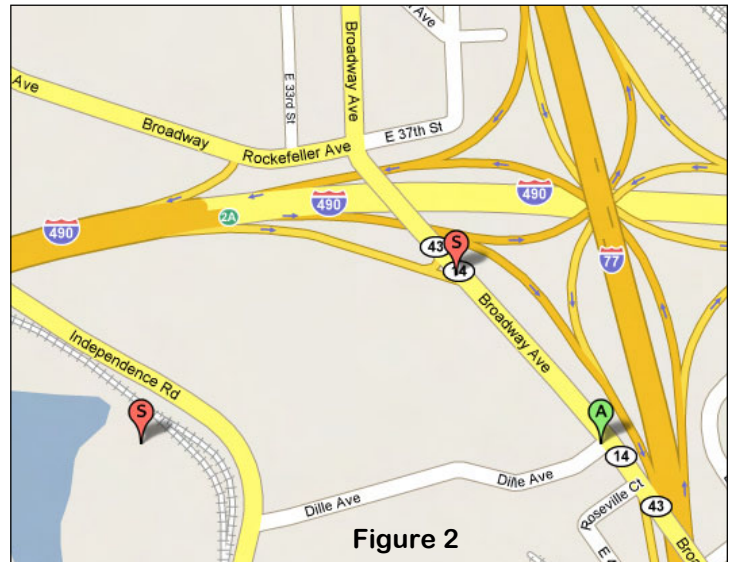
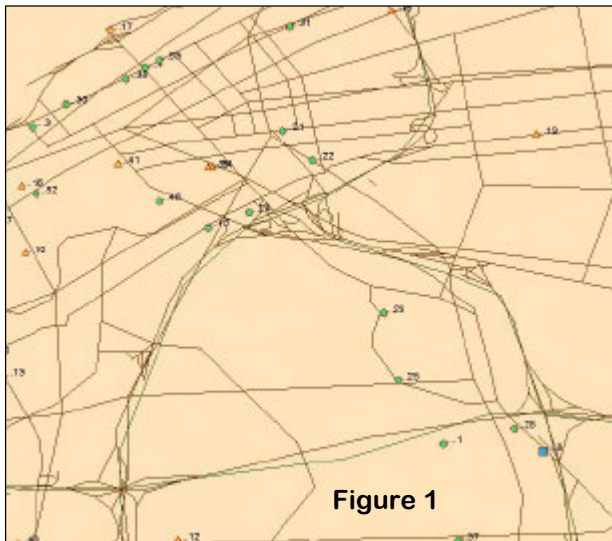
Web: [www.rand.com/IMAGINiT](http://www.rand.com/IMAGINiT)

Email/info: [LHorowitz@rand.com](mailto:LHorowitz@rand.com)



**NGS BENCHMARKS** by Robert G. Hoy

Finding information on geodetic monuments set by the National Geodetic Survey has been difficult. If you have used the NGS Survey Control Map viewer, you have my sympathy. It is awkward to navigate, lacking in geographic information, and is not user friendly. Here is what the area around downtown Cleveland looks like from the NGS Map Viewer (Figure 1). You might be fortunate to discern I-71 and I-77, but you will need to use the Identify tool and click on a line to have the road name displayed at the bottom of the screen.



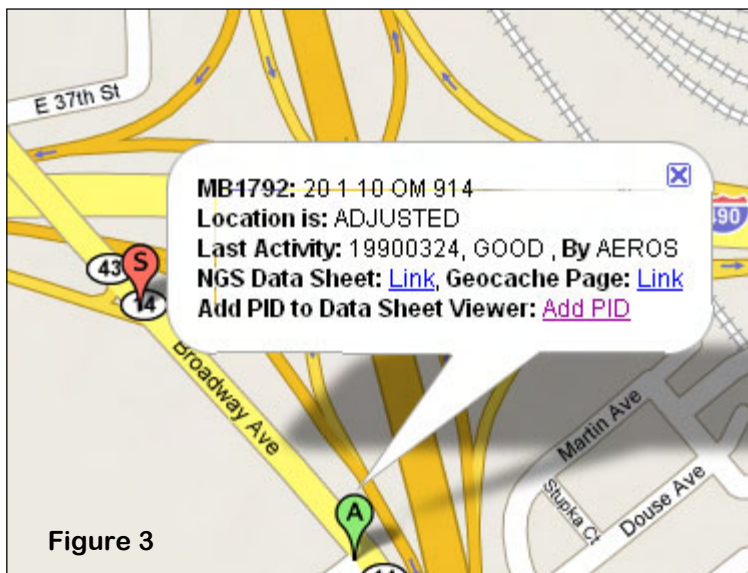
A few weeks ago I emailed Dave Connor, Ohio's NGS representative, asking if there was an easier way to find geodetic information. He was as frustrated as I was about the Map Viewer and he offered a couple of downloadable shape files.

A couple weeks later Chapter member Trevor Bixler forwarded me this link to an alternative NGS data point finder: <http://benchmarks.scaredycatfilms.com/OH.html>. This site is not affiliated with the National Geodetic Survey. It displays NGS control points inside Google Maps with the option of a few different geographical backdrop overlays. This site operates a bit slower than Google Maps usually does, but it is well worth the extra couple of seconds. I am able to find useable information in a couple of minutes compared to the NGS Map Viewer that could cost me an hour or more of my time.

One disappointing thing about the NGS Map viewer is its inability to not display stations destroyed or not found. This new site corrects this issue. Here is a screen shot from this new site (Figure 2). The area shown is in the bottom right corner of the NGS Map Viewer screen shot (Figure 1).

Notice how easy it is to identify where exactly these monuments are located with the full road and railroad map. Red signifies monuments destroyed or not found and green is an active monument. **A** stands for good adjusted values and **S** for data value being scaled from a map. These are explained in the legend on this new site. When you click on the green A point locator, the display is shown in Figure 3.

.....Continued on Page 12



If you click on the NGS Data Sheet: [Link](#), the official NGS Data Sheet pops up. What more could you ask for? I have an idea, but it will have to wait for a later article. Enjoy this great new tool!

Robert G. Hoy

# HIGH GRADE HARDWOOD SURVEY STAKES

## DELIVERY AVAILABLE

- TOPCON DEALER
- SOKKIA DEALER
- FIELD SUPPLIES
- INSTRUMENT SALES, SERVICE & RENTAL
- GPS TECHNOLOGIES
- FIELD EQUIPMENT



# ROBERTS

## *Surveying Supplies*

[WWW.ROBERTSSURVEYING.COM](http://WWW.ROBERTSSURVEYING.COM)

5758 Ridge Road Parma, Ohio 44129

Phone (440) 842-2218

Fax (440) 842-0802



August, 2007

My report in the last issue of the newsletter explained that we are trying a new approach to educational classes sponsored by the Cleveland Chapter and directed toward field personnel. Our first class is outlined below. Our plan is to offer one class in the fall and another in the spring. The success of this first class will be considered when we plan the spring session.



**Tom Snezek**  
Education Trustee

## **FALL 2007 TECHNICAL SEMINAR**

**Saturday, November 3<sup>rd</sup>, 2007  
9:00 a.m. to 12:00 noon**

**FIELD OPERATIONS - TECHNICAL SEMINAR  
FOR PARTY CHIEFS, INSTRUMENTMEN AND FIELD TECHNICIANS**  
(This is not a CPD credit seminar)

The Cleveland Chapter is offering a one-day class at the Cuyahoga County Engineers Test-Lab training facilities located at 2429 Superior Viaduct, Cleveland, Ohio 44113.

# **FIELD OPERATIONS WITH ROBOTIC INSTRUMENTS**

**Presented by Dale Glancy and Dennis Fay from City Blueprint of Toledo**

Instructional seminar followed by a field demonstration outdoors at the Test-Lab. A question and answer session will be included along with pizza and beverages immediately following the demonstration, so bring all your issues and notes.

The cost of the seminar is \$50.00 per attendee and the checks should be made out to the "Cleveland Chapter, P.L.S.O." The deadline for registration is October 19<sup>th</sup>, 2007.

Please mail your check and application form to: Thomas M. Snezek, P.S. Education Committee Chairman.  
3496 Colletta Lane, Cleveland, Ohio 44111.

If you have any questions call or email me. My contact information is: (216) 348-3846 or dadsurv@hotmail.com.

### **DIRECTIONS:**

From Downtown Cleveland go west on Superior Ave. Cross the Veterans Memorial Bridge, (Detroit-Superior to some). Turn right onto West 25<sup>th</sup>. Then right again onto the Viaduct, (right in front of St. Malachi Church). The Test Lab will be on your right.

NAME: \_\_\_\_\_ PHONE: \_\_\_\_\_

NAME: \_\_\_\_\_ PHONE: \_\_\_\_\_

NAME: \_\_\_\_\_ PHONE: \_\_\_\_\_

COMPANY: \_\_\_\_\_

**REGISTRATION**

**FALL 2007  
TECHNICAL SEMINAR**



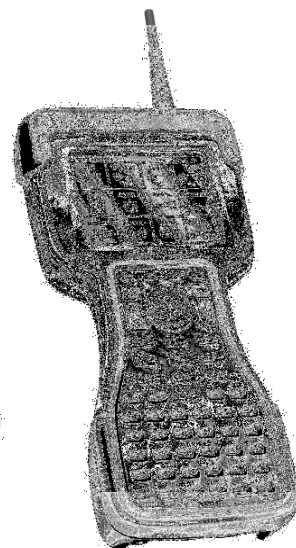
2010 Madison Avenue  
Toledo, OH 43604

Sales • Service • Rental  
Leasing • Training • Support

## Trimble TSC2 Controller

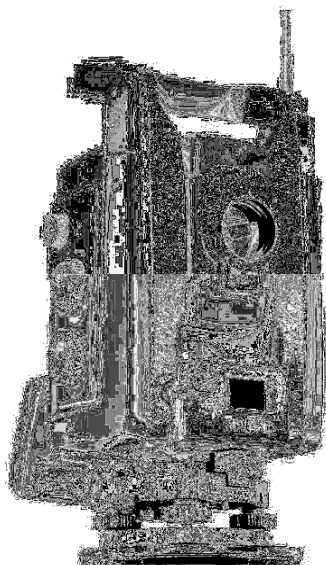
### Key Features

- Highest flexibility for optical and GPS surveying
- Wireless operations in both the field and office
- Exceptional versatility, efficiency, and freedom
- Choice of powerful TDS or Trimble software.
- Flexible Communication Options
- Increase your productivity
- Built for field conditions



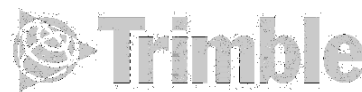
For Northwest Ohio Call Dennis Fay at 419-206-0308  
for onsite demonstration.

## Trimble S6 Robotic Total Station



### Key Features

- 100% cable free
- Reflectorless EDM
- SurePoint accuracy
- Internal smart battery
- MultiTrack technology
- Increase your productivity
- MagDrive servo technology
- Coaxial Optics, EDM, Laser Pointer, Tracker



For Northeast Ohio Call Dale Glancy at 216-513-3083  
for onsite demonstration.

Tel: (419) 243-7271    Fax: (419) 243-6418    Toll Free: 800-548-1503  
E-Mail: [cbt@cityblueprintoftoledo.com](mailto:cbt@cityblueprintoftoledo.com)



## A Dynamic

## One-Day Seminar on

September 24, 2007

Quest Business Center

8405 Pulsar Place Columbus, OH 43240

(800) 909-7665 or (614) 540-5540

[www.quest-centers.com](http://www.quest-centers.com)

# Essential Business Skills for Professional Surveyors and Engineers

**\$225 - PLSO members**

**\$275 - Non-members**

(includes lunch)

**You'll earn eight Professional Development Hours (PDH's) in just one day by attending one of the following eight-hour sessions taught by adjunct faculty from accredited universities who are recognized experts in their fields.**

## COMMUNICATION SKILLS FOR TECHNICAL PROFESSIONALS

This course is designed specifically for technical professionals who wish to improve their interpersonal and written communication skills.

## ESSENTIALS OF EMPLOYMENT LAW

An introduction to employment and labor law and its practical application to hiring, supervising and terminating employees.

## SUPERVISORY SKILLS FOR DYNAMIC LEADERSHIP

An introduction to the skills, tools and strategies necessary to be an effective manager in today's work environment.

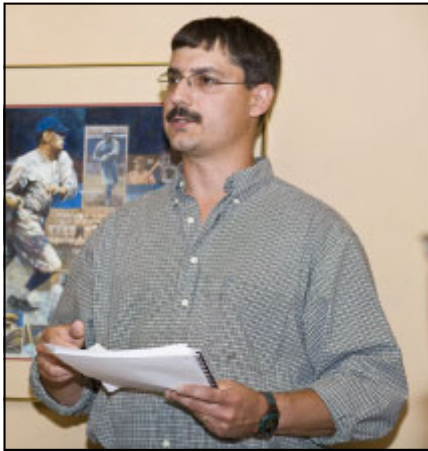
Download a registration form at:

[www.ohiosurveyor.org/seminar.html](http://www.ohiosurveyor.org/seminar.html)

***Registrations are due by September 1, 2007***

For more information call: (614) 761-2313





Brad presented an overview of PLSO at the State level. The central office is now up to three employees. The State Line project headed by Dean Ringle is marching on along the Indiana line and will be in Butler County this weekend. The next *State Executive Committee* meeting is on July 20 and several additional meetings are always scheduled earlier in the day. The *Scholarship Committee* is looking to set a higher goal for future scholarships. They would like to see a total of six scholarships each year. Three \$1,000.00 awards for Associates Degrees and three \$2,000.00 awards for Bachelor of Science. The committee also includes delegates from every chapter that offers a scholarship. This consolidates information on what scholarships are available and who is applying for the scholarships and provides a safety net to ensure that anyone in need can

find assistance. The *Political Action Committee* has funds of \$800.00 and would like to see that amount tripled. A fund raiser is scheduled during the Summer Seminar in August. The *Legislation Committee* is following SB 83 and HB 110 which concern a revision to septic system requirements. The goal is to revert to the former rule that involves a professional surveyor.

Other news ..... Our first attempt at a Summer Seminar is August 3 in Sandusky hosted by the Firelands Chapter. The Business Seminar is scheduled for September 24 in Columbus. The Fall Seminar is October 25 at the Cherry Valley Lodge in Newark hosted by the Central Chapter. ODOT is reviewing policy for setting R/W monumentation. Currently they require the surveyor who initially surveyed the area to set monuments and are now considering letting any surveyor set the monuments as long as the work is completely documented. They're also looking for a Newsletter Editor since Don Freimoth is retiring after 30 years.

## 2008 Annual Conference Report

### Conference Dates: Feb. 7-8, 2008

**Location:** Renaissance Cleveland Hotel

Although it's the middle of summer the PLSO Annual Conference in Cleveland will be here before you know it. The Renaissance Hotel should provide a great facility for the event with indoor access to Tower City and a short walk from the Warehouse District.

The conference agenda is coming together with nearly all of the speakers committed or under contract. We have several nationally recognized speakers as well as some local flavor. So there should be something interesting for everyone. Some of the speakers and topics, in no particular order include:

**James Reilly, PhD** – GPS/Geodesy

**Joseph Paiva, PhD, PS, PE** – Analysis of Errors in Surveying and  
Making the Most of Your Total Station

**Jeff Lucas, JD, PLS** – Being a Expert Witness and Land Surveyor's Liability

**John E. Dailey, PS** – History of Ohio Surveys

**Tricia Thurman** – Business Procedures

**John Matricardi, P.E.** – Submerged Land Leases



**Mark Yeager**  
2008 Conference  
Chairman

Mark your calendars and stay tuned for more information on the event in the coming months.



# Calendar

August 6                    **Executive Committee Meeting**  
 August 10                Cleveland Surveying News Deadline

September 6            **Seminar Meeting**  
 September 14          State Executive Committee Meeting  
 September 17          **Executive Committee Meeting**  
 September 21          Cleveland Surveying News Deadline  
 September 24          **PLSO Business Seminar, Columbus**

**Executive Committee Meetings**  
 are held at the office of  
 John R. Hoy and Associates  
 4562 W. 130 St., Cleveland  
 and are open to all members of the  
 Chapter who want to attend.

October 4                **Seminar Meeting**  
 October 12            State Executive Committee Meeting  
 October 15            **Executive Committee Meeting**  
 October 19            Cleveland Surveying News Deadline  
 October 19            *Registration Deadline for Field Technician Seminar*  
 October 25-26        **PLSO Fall Seminar, Cherry Valley Lodge, Granville**

November 1            **Seminar Meeting**  
 November 3            *Field Technician Seminar - Cuyahoga County Test Lab*  
 November 9            State Executive Committee Meeting  
 November 19          **Executive Committee Meeting**

December 10          **Executive Committee Meeting** (if needed)  
 December 14          State Executive Committee Meeting (if needed)

---

January 11, 2008      State Executive Committee Meeting  
 January 14, 2008      **Executive Committee Meeting**  
 January 18, 2008      Cleveland Surveying News Deadline  
 January 24, 2008      **Annual Meeting**

February 7-9, 2008 **PLSO Annual Conference, Cleveland**