



Cleveland Surveying News

November 2014

- **Nov. 6 - Social Dinner**
- **2015 Officers - You are Needed!**
- **Random Lines**



Sales • Service • Rental • Leasing • Training • Support

Mapping, Scanning and Surveying Solutions
Serving Ohio for over 47 years



Authorized Dealer

3455 Briarfield Blvd – Suite D

Maumee, OH 43537

Tel: 800-548-1503

Fax: 419-243-6418

info@cityblueprintoftoledo.com

www.cityblueprintoftoledo.com

Cleveland Chapter

Professional Land Surveyors of Ohio

PRESIDENT
(*vacant*)

PRESIDENT-ELECT
(*vacant*)

TREASURER
Timothy Feller, PS
timf@mcsteen.com

SECRETARY
Steven Metcalf, PS
secretaryclevelandplso@gmail.com

DELEGATE
(*vacant*)

PAST PRESIDENT
Robert Hoy, PS
robert.hoy7@hotmail.com

Cleveland Surveying News

Volume 13, Issue 7
Distribution: 410

Editor: (open if interested)
Publisher: [Robert Hoy](#)

Columnists:
[John Dailey, PS](#)
[Peter D. Zwick, PE, PS](#)

Cover Photographer:
John G. Hoy, PS

2015 Advertising Rates

Full page: 9.6"x7.3" \$400 yr
1/2 page: 4.8"x7.3" \$200 yr
1/4 page: 4.8"x3.6" \$100 yr
[Email the CSN](#)

Cleveland Chapter of PLSO
P. O. Box 81713
Cleveland, OH 44181-0713

Features

[November 6 Social Dinner](#) 4

Meetings

[November Executive Meeting](#) 6

Articles

[Random Lines by John Dailey](#) 8

Reports

[Delegate](#) 9

[2015 Officers Needed](#) 6

[October Seminar Review](#) 14

Miscellaneous

[Chapter Calendar](#) 11

www.plso.info 13

[State Board News](#) 13

[Dream House Video](#) 13

Social Dinner Meeting Thursday November 6

Location: Das Schnitzel Haus
5728 Pearl Road, Parma
440-886-5050

Cost: Order off the menu, pay your own bill.

Come for good food, talk shop with fellow Surveyors, volunteer to be a 2015 Chapter Officer or Committee Chair, and have a good time!

Talk over what you heard and learned at the October GPS Seminar we put on.

Find out how you can help the Cleveland Chapter run in 2015, your help is needed! All Ohio Surveyors benefit from PLSO efforts!



Schedule

6:00 Socializing
6:30 Dinner

Reservations

Contact Steve Metcalf:
secretaryclevelandplso@gmail.com
440-915-6928

HIGH GRADE HARDWOOD SURVEY STAKES

DELIVERY AVAILABLE

- TOPCON DEALER
- SOKKIA DEALER
- FIELD SUPPLIES
- INSTRUMENT SALES, SERVICE & RENTAL
- GPS TECHNOLOGIES
- FIELD EQUIPMENT



ROBERTS

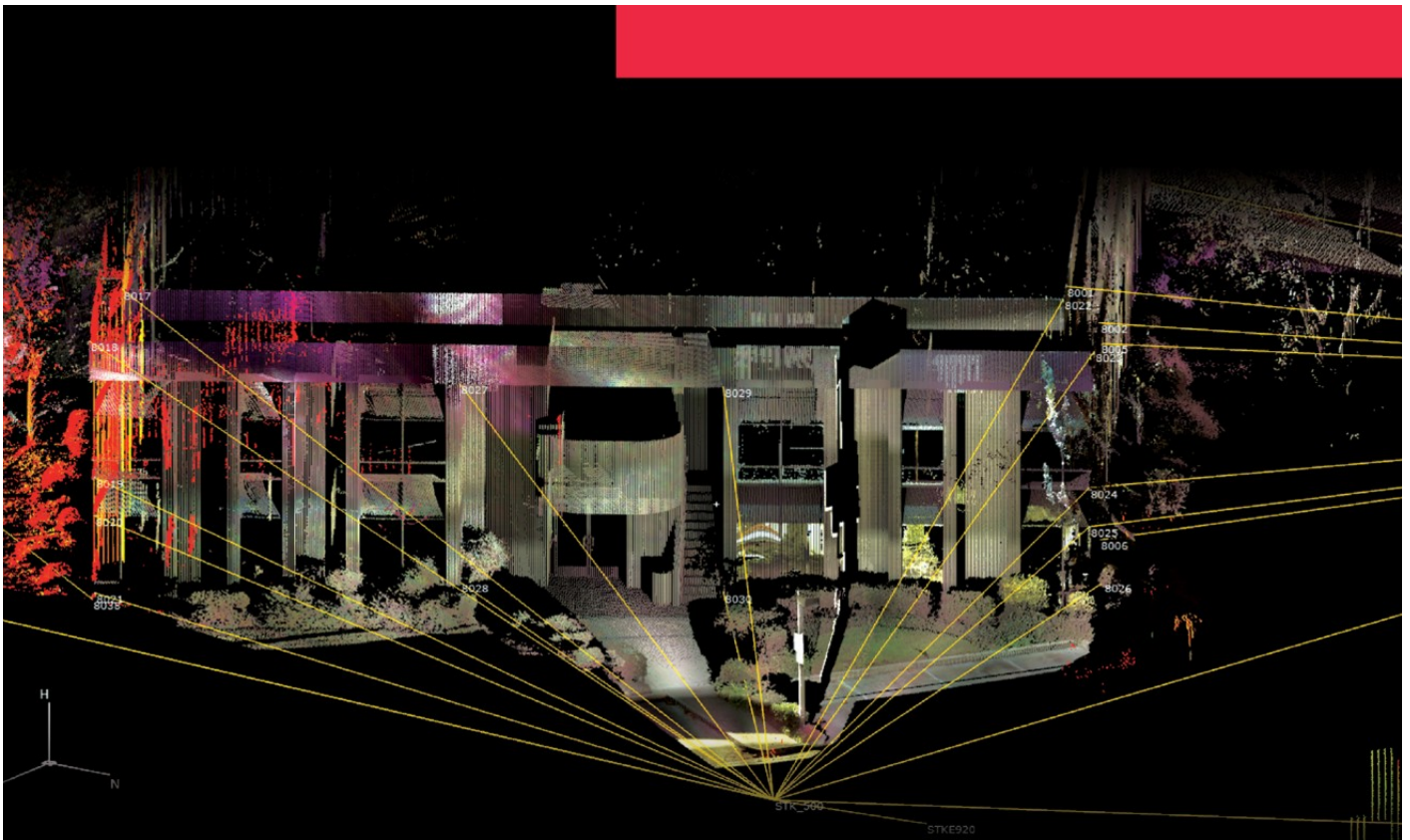
Surveying Supplies

WWW.ROBERTSSURVEYING.COM

5758 Ridge Road Parma, Ohio 44129

Phone (440) 842-2218

Fax (440) 842-0802



“After a few hours training with the MS50, we were able to get to work immediately on actual projects and provide high-quality 3D deliverables with minimal extra time. Processing all the points we gather, in one environment, is a real time saver.”

Mike Angelo, EIT, PLS
Vice-President of Geomatics
WestLAND Group, Inc.
Rancho Cucamonga, California

novalearningnetwork.com



Leica Nova MS50



For more information, contact Alex Cherchian:
(O) : 614-264-6722 | (E) alex.cherchian@leicaus.com

- when it has to be **right**

Leica
Geosystems

2015 Officers

President: _____, PS
 President-Elect: _____, PS
 Treasurer: _____
 Secretary: _____
 Delegate: George Hofmann, PS

We are on the eve of November and here is our officer list to date for our 2015 Chapter. A slim list.

Offices of President, President-Elect, and Delegate *must* be filled by a Chapter member of Professional, Life, or Retired categories.

We need **you** to get involved! If you're currently an officer or committee chair and want to continue in 2015, please let me know.

There are non-officer committees that need filled that include: Scholarship, Trig*Star, Social Program, Membership.

Our Chapter runs most efficiently when people pitch in and help. The time is now.

Robert Hoy, PS
 Past President

Chapter Executive Committee Meeting

Our next executive meeting will be:

When: **Monday November 17**
 Time: 6:00 pm
 Where: Neff & Associates
 6405 York Road
 Parma Heights

We have 2015 Officer openings see the left side of this page!

Being an active participant in an officer or committee position earns you 2 PDHs of continuing education per year!

MAGNET Enterprise

Field and Office.
Connected.



Field



Enterprise



Office

TOPCON

The software solution that streamlines the workflow for surveyors, contractors, engineers and mapping professionals.

MAGNET Enterprise is a web browser-based environment that simplifies managing field and office data in the cloud. Track assets and communicate with everyone involved on your projects. Login from any browser for live updates. Save time and collaborate during a project.

- Web Browser Access
- Data Secure Backup
- Live Data Exchange
- Chat and Communicate with Others
- Map View of Field Data



ASK US ABOUT
GeoShack
Advantage



Everything for Jobsite Accuracy.

CLEVELAND • COLUMBUS

1-800-527-3762 • www.geoshack.com



**Precision Laser
& Instrument, Inc.**
www.laserinst.com

Construction • Survey • GIS

Sales • Service • Rentals • Training • Support



FOCUS 30



Ranger 3



Nivo C Series



EPOCH 50



New 6G w/ 240 GNSS Channels
For Monitoring All GNSS Systems!
(GPS, GLONASS, SBAS, etc.)

Z-Blade GNSS-Centric Technology
For Optimal RTK Performance Anywhere!

Anti-Theft Protection
To Keep Your Equipment Safe!

Built-in WiFi, GSM/UMTS & 3.5G
For SMS & Email Alerts!

Inside-The-Rod Mounted UHF Antenna
For extended RTK Radio Performance!

Rugged, Waterproof & Ergonomic

Dual, Hot-Swappable Batteries

Featuring the SP80 GNSS Receiver
The Most Connected GNSS Receiver

The Spectra Precision SP80 is a next generation GNSS receiver that combines decades of GNSS RTK technology with revolutionary new GNSS processing.



IP67



Locations:



"We're focused on YOU!"

Pittsburgh Office

85 11th Street
Ambridge, PA 15003
Ph: (724) 266-1600
Fax: (724) 266-8161

Columbus Office

372 Morrison Rd., Suite D
Columbus, OH 43213
Ph: (614) 759-1000
Fax: (614) 759-7059

Cincinnati Office

820-B Lebanon Street
Monroe, OH 45050
Ph: (513) 539-0022
Fax: (513) 539-0033

Akron Office

2567 S. Arlington Rd., Suite 5
Akron, OH 44319
Ph: (330) 633-4900
Fax: (330) 633-4999

WV Office

504 Old Goff Mtn. Rd.
Cross Lanes, WV 25313
Ph: (304) 776-1831
Fax: (304) 776-6790

Random Lines

by John Dailey, PS

An Open Letter to:

The Surveyor, Technician or Whatever working in Parma Heights on West Ridgewood Drive between York Road and Ames Drive on Wednesday, October 8, 2014:



John Dailey, P.S.

Dear Sir:

Were you born stupid or did you have to gain that by experience?

I was driving westbound on West Ridgewood heading towards York Road and saw you working with a GPS rover rod, jumping in and out of traffic (which was reasonably heavy) gathering information. True, you were wearing a florescent green shirt, but there was no other indication that you were there, no cones, no signs, nothing. It was a reasonably sunny day and there were deep and intermittent shadows making it hard for a driver to see you. I hope you made it home that night.

You were not only a danger to yourself, but also to the drivers on the street.

(Cont'd on Page 9)

Jake's Stakes

AMISH MADE

8200 Camp Road Homerville, Ohio

SURVEYING and CONSTRUCTION STAKES

High quality, light colored, HARDWOOD and smooth

MARKER STAKES

18" x 1	5/8" x 1/2"	\$0.18 ea
24" x 1	5/8" x 1/2"	\$0.20 ea
30" x 1	5/8" x 1/2"	\$0.25 ea
36" x 1	1/2" x 7/16"	\$0.28 ea
48" x 1	1/2" x 7/16"	\$0.36 ea
48" x	7/8" x 1/2"	\$0.24 ea

- **NO ORDER TOO** ■
- **SMALL or TOO** ■
- **FAR** ■

SQUARE HUBS

12" x 2" x 2"	\$0.24 ea
18" x 2" x 2"	\$0.32 ea
22" x 2" x 2"	\$0.36 ea

WEDGES HUBS

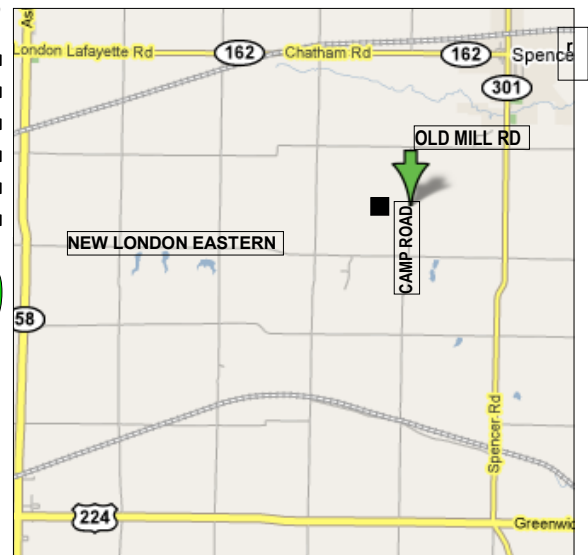
22"	HUB MARKER	\$0.13 ea/Bundle of 100	
9"		\$0.13 ea	
12"		\$0.15 ea	F

METAL REBAR RODS

Available Any Length Call for \$

**ORDERS FILLED
RAPIDLY!**

**FREE DELIVERY ON
LARGE ORDERS**



IF WE DON'T HAVE IT - WE MAKE IT!

DELIVERY AVAILABLE : CALL Dwight at Spencer Feed & Supply 330-648-2111

*** WE DELIVER ANYWHERE * WE DELIVER ANYWHERE * Fax Orders: Attn. Dwight 330-648-2552**

Random Lines (from Page 8)

May I suggest that you take a course in survey safety or do some research into safety procedures published by the various state highway departments. It may allow everyone involved to go home safely at the end of the day.

Very Truly Yours,
John E. Dailey, P.S.
jdailey@sbcglobal.net

Well, it is getting to that time of year again when the Cleveland Chapter will be begging someone to step forward and help lead this Chapter. It is not a hard or time consuming job if there are enough people to help carry the load. You cannot expect a couple of people to do everything for you.

This is your Professional Society, working to protect your status and your ability to earn a living. If you think you are a "lone wolf," think again. We sorely need a united front to face the various challenges to our profession. More and more of our services are being performed by button pushers. PLSO is such a professional society and NSPS is another.

I know that many of you support the professional societies financially by being members, but what is needed is ACTIVE members., people who will step into a leadership position and be ACTIVE.

From personal experience, I can say that my years of active participation were very worthwhile from a business perspective. Some of the friends I have made along the way have become lifelong friends, The business contacts that you make are priceless. The networking possibilities are endless.

The sideline sitters are really missing out. Besides the business aspects, it is fun. Get into the game. You will not regret it.

John E. Dailey, Past

Cleveland Chapter's Delegate Report

The report included herein is offered only as informational to the members of the Cleveland Chapter. The reader is deferred to the approved minutes of the P.L.S.O. for any clarifications

Thursday October 16, 2014 Great Wolf Lodge – Mason Ohio Call to Order 5:41 PM

- 15 Officers and Delegates present, Quorum Established.
- Review and passage of September 2014 meeting minutes with no changes.
- Treasurer's Report –Reviewed and accepted subject to the Finance Committee's review, as per the Charter guidelines.
- New Members – 6 Professional, 1 Affiliate, 2 Student were reviewed and motions passed to accept. **Note that we welcome back Professional members Terrence** (Cont'd on Page 10)

Delegate's Report (from Page 9)

Worsech and Chris Hirzel.

- The PAC fund is at \$1999.35 with numerous donations coming in at the conference.
- The next OSN newsletter deadline is December 1st. That issue will have all you need to know about the Annual Conference.
- Director Gilpin and NSPS Governor Bob Akins will attend their conference in Kansas in late October.
- There are three workshops available soon. One in Aurora on November 7, one in Columbus on November 21 and one in Toledo on December 12.
- Director Gilpin reported that as of October 1st. there are 1055 members in the P.L.S.O. with 800 of them signing up for the N.S.P.S. membership this year.
- Finance Committee chairman George Hofmann reviewed the proposed 2015 budget. It will be voted on at the November Excom meeting and approved by the membership at the annual conference.
- A motion was made and passed to authorize the management to put a bid together to offer limited administrative services to the Ohio Surveyor's Historical Society.
- P.L.S.O. will have a booth at the O.T.E.C. conference this fall.
- President Bingham noted that with the exam process now available on line for the S.I. and E.I. candidates the tendency is for them to get their certificates by mail and not attend the ceremonies. Only three S.I. and E.I. were in attendance. He discussed having new registrants be recognized at the conferences.
- Adjourned at 6:39 PM.

Respectfully submitted,

Thomas M. Snezek, PS
Acting Chapter Delegate and State Secretary



Aerocon Photogrammetric Services Inc
Dedicated to providing quality photogrammetric services since 1967

- **Aerial Photography**
- **Digital Orthophotography**
- **Digital Topographic Mapping**
- **Analytical Triangulation**
- **DTM/DEM Surface Generation**
- **LiDAR**
- **Airborne GPS**
- **GIS Services**
- **Volumetric Inventories**

4515 Glenbrook Road
Willoughby, OH 44094-8215
440.946.6277
440.946.2646 Fax
e-mail: skymap@aerocon.com
www.aerocon.com



Executive Committee Meeting Highlights

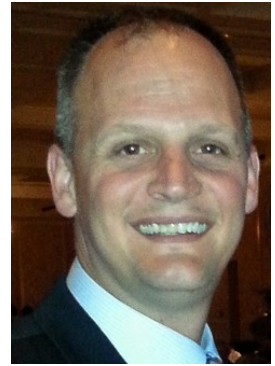
October 18, 2014

6:05 p.m.

In attendance:

-

The meeting was canceled due to officer schedule conflicts. Our last meeting of the calendar year will be on November 14th. See page 6 for details.



Steven Metcalf
Secretary

Cleveland Chapter of PLSO 2014 Calendar

Chapter Executive Meetings are held 6 p.m. at the office of Neff & Associates at 6405 York Road Parma Heights and are open to all PLSO members who want to attend.

Nov 6 Social Dinner

Nov 14 PLSO Executive Meeting

Nov 17 Chapter Executive Meeting

Nov 21 Cleveland Surveying News deadline

Dec 8 Chapter Executive Meeting (if needed)

2015

Jan 10 PLSO Executive Meeting

Jan 12 Chapter Executive Meeting

Jan 13 Cleveland Surveying News deadline

Jan 22 Annual Meeting

PLSO: Who Are We?

The P.L.S.O. is a group of licensed Land Surveyors – Professional Surveyors. We are licensed by the State of Ohio to serve the public (much like doctors, lawyers, architects and professional engineers are licensed). The Professional Land Surveyors of Ohio is a statewide organization that serves the public and the profession. The Cleveland P.L.S.O. is one of its local chapters.

We encourage you to contact any of our local members when you or your constituents have questions. Professional Surveyors can be particularly helpful for: determining setbacks, splitting property, resolving conflicting deeds, locating structures, identifying encroachments, writing easement or submerged land lease descriptions, and staking improvements such as fences and buildings.

2015 Advertising Rates

Full page: 9.6"h x 7.3"w \$400 yr.

1/2 page: 4.8"h x 7.3"w \$200 yr.

1/4 page: 4.8"h x 3.6"w \$100 yr.

Contact: robert.hoy7@hotmail.com

ADVERTISERS

2	City Blueprint of Toledo	7	Precision Laser & Inst.
4	Roberts Surveying Supplies	8	Jake's Stakes
5	Leica Geosystems	10	Aerocon Photogrammetry
6	GeoShack	12	Imaginit Technologies

REALITY

MODELING

Capture Reality. Model Dreams.

At the intersection of reality capture and modeling are
point clouds, workflows and high definition scanning.

Partner with an organization that knows all three.

IMAGINiT Technologies Scanning Solutions.
YOUR PROBLEM. SOLVED.

IMAGINiT
TECHNOLOGIES

216.834.8300
www.imaginit.com

AUTODESK
Platinum Partner

Specialization

Building
Civil Infrastructure
Product Design & Manufacturing
Government
Education

Value Added Services

Consulting Specialized
Product Support Specialized
Authorized Training Center

Leica
Geosystems

State Board Settlement

According to the State Board of Registration, Stephanie A. Sires, PS, a resident of Norton, Ohio performed a mortgage location survey for a residence that did not meet the Standards for Mortgage Location Surveys (Ohio Administrative Code 4733-38). In order to avoid formal charges for violations of Ohio law, Sires entered into a settlement agreement wherein she agreed to comply with the laws and rules governing the practice of surveying in Ohio, pay a \$3,000 file and receive a three-year stayed suspension.

Wrong Lot

A video from cable news about this beautiful, expensive new home constructed on the wrong lot.

Click photo to see the video.



An *invaluable* tool for Cleveland Chapter members is exclusive access to the Survey Bank containing thousands of surveys in our area. Painstakingly catalogued by member volunteers, this is a searchable database covering Cuyahoga County with overlap into adjoining counties.

Website:

PLSO.info

Free Cleveland Chapter Member login

Contact the Website Committee Chair:

Dino Lustri

dino@dles.co

CPD Seminar Review

October 2, 2014

GNSS Best Practices

by Gary Schuller, PS & Ted Muns, SI

50 surveyors showed up for our seminar. Lots of good conversation, networking, and good food. There's definitely a lot of interest in GNSS. With GNSS there's several ways to "skin the cat" and get different results in the process.



Standing room only!



A packed room, could have been a fire code violation!