

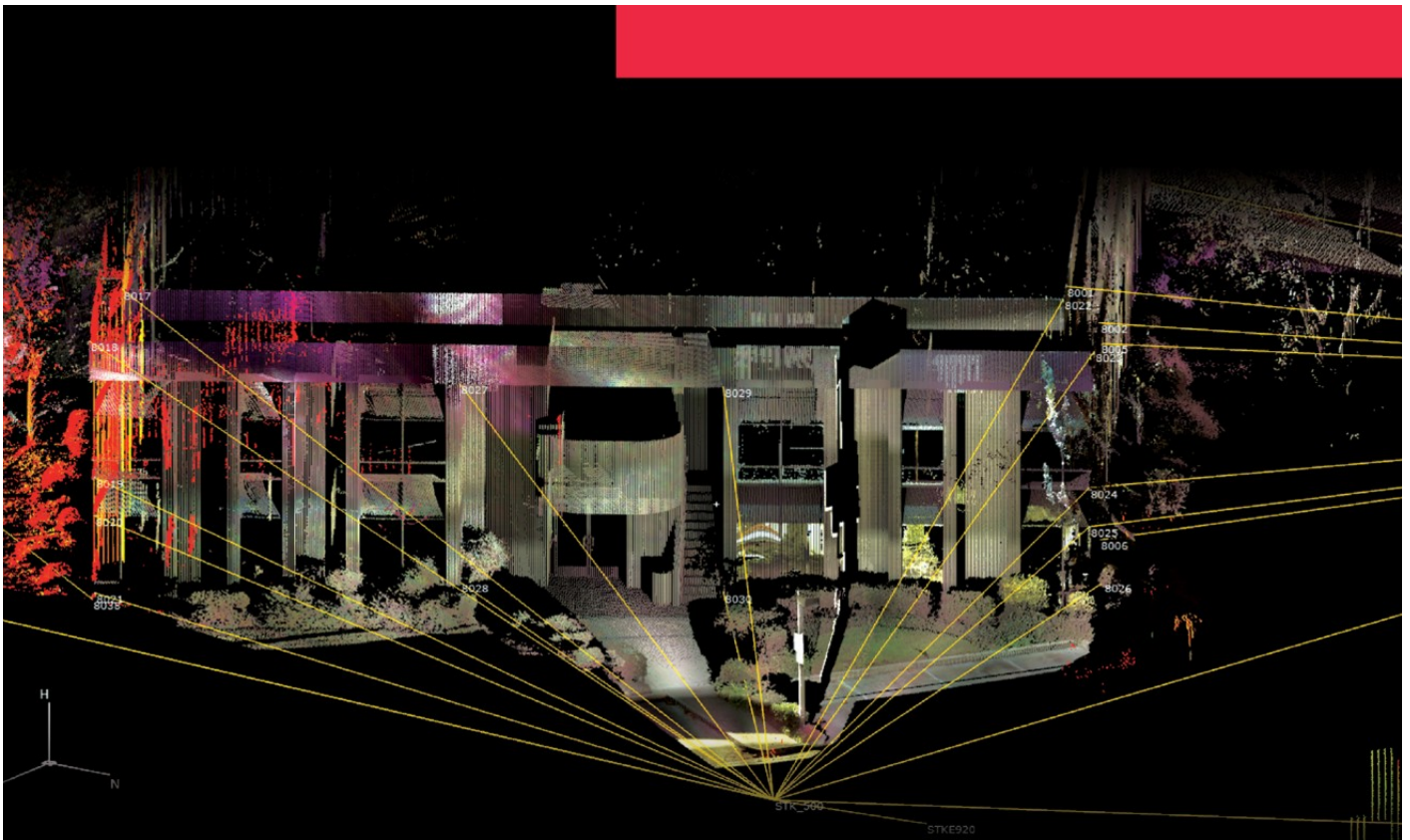
- 
- September Seminar - Canceled
  - Innerbelt Bridge - CSN Follow-up

# Cleveland Surveying News

September 2014

Photography by John G. Hoy, PS





“After a few hours training with the MS50, we were able to get to work immediately on actual projects and provide high-quality 3D deliverables with minimal extra time. Processing all the points we gather, in one environment, is a real time saver.”

Mike Angelo, EIT, PLS  
Vice-President of Geomatics  
WestLAND Group, Inc.  
Rancho Cucamonga, California

[novalearningnetwork.com](http://novalearningnetwork.com)



Leica Nova MS50



For more information, contact Alex Cherchian:  
(O) : 614-264-6722 | (E) [alex.cherchian@leicaus.com](mailto:alex.cherchian@leicaus.com)

- when it has to be **right**

**Leica**  
Geosystems

# Cleveland Chapter

## Professional Land Surveyors of Ohio

PRESIDENT  
(*vacant*)

PRESIDENT-ELECT  
(*vacant*)

TREASURER  
Timothy Feller, PS  
[timf@mcsteen.com](mailto:timf@mcsteen.com)

SECRETARY  
Steven Metcalf, PS  
[secretaryclevelandplso@gmail.com](mailto:secretaryclevelandplso@gmail.com)

DELEGATE  
(*vacant*)

PAST PRESIDENT  
Robert Hoy, PS  
[robert.hoy7@hotmail.com](mailto:robert.hoy7@hotmail.com)

### Cleveland Surveying News

Volume 13, Issue 5  
Distribution: 410

Editor: (open if interested)  
Publisher: [Robert Hoy](#)

Columnists:  
[John Dailey, PS](#)  
[Peter D. Zwick, PE, PS](#)

Cover Photographer:  
John G. Hoy, PS

### 2014 Advertising Rates

Full page: 9.6"x7.3" \$400 yr  
1/2 page: 4.8"x7.3" \$200 yr  
1/4 page: 4.8"x3.6" \$100 yr  
[Email the CSN](#)

Cleveland Chapter of PLSO  
P. O. Box 81713  
Cleveland, OH 44181-0713

## Features

[Innerbelt Bridge: CSN Follow-up](#) 11

## Meetings

[September Seminar - CANCELED](#) 4

[September Executive Meeting](#) 8

[June Education Dinner - Photos](#) 9

## Articles

[Innerbelt Bridge: CSN Follow-up](#) 11

## Reports

[Delegate](#) 5

[2014 Officers Needed](#) 9

[August Executive Highlights](#) 12

[Scholarship](#) 14

[May Executive Meeting Minutes](#) 15

## Miscellaneous

[Chapter Calendar](#) 8

[www.plso.info](http://www.plso.info) 11

## Seminar Meeting Thursday September 4

# CANCELED!!

Our September seminar meeting is canceled due to busy schedules **and** a lack of participation by our members to help run the chapter.

It takes participation to determine seminar topics, coordinate speakers, and arrange meeting locations. If you enjoy coming to our seminars, *get off your butts and volunteer to assist the chapter*. Our chapter runs smoothly when many people do a little something.

Coming to PLSO meetings is about networking with other professionals **and** helping our the surveying profession. You're more likely to get help from another surveyor if you are both PLSO members, and even *more likely* to get help if you've actually met him or her before. There's no better place than PLSO meetings for that.

Contact the Executive Committee, see Page 2

# MAGNET Enterprise

Field and Office.  
Connected.



Field



Enterprise



Office



The software solution that streamlines the workflow for surveyors, contractors, engineers and mapping professionals.

MAGNET Enterprise is a web browser-based environment that simplifies managing field and office data in the cloud. Track assets and communicate with everyone involved on your projects. Login from any browser for live updates. Save time and collaborate during a project.

- Web Browser Access
- Live Data Exchange
- Map View of Field Data
- Data Secure Backup
- Chat and Communicate with Others



ASK US ABOUT  
**GeoShack**  
Advantage



**GeoShack**  
Everything for Jobsite Accuracy.

**CLEVELAND • COLUMBUS**  
1-800-527-3762 • [www.geoshack.com](http://www.geoshack.com)

## Cleveland Chapter's Delegate Report

*\*The report included herein is offered only as informational to the members of the Cleveland Chapter. The reader is deferred to the approved minutes of the P.L.S.O. for any clarifications\**

Friday July 11, 2014

Call to Order 6:08 PM

- 18 Officers and Delegates present, Quorum Established. Review and passage of May 2014 meeting minutes with no amendments.
- Treasurer's Report -Reviewed and accepted subject to the Finance Committee's review, as per the Charter guidelines.
- Special Report - John Greenhalge of State Board presented an update on their efforts to look into the status of surveying in Ohio. A committee will be formed, volunteer are needed. They will review the reduction of academic facilities offering four year programs in surveying and the decreased enrollment in such programs.
- New Members - New members list - 5 Professional, 2 Affiliate, 1 Associate and 2 Retired membership applications were reviewed and motions passed to accept.
- Don Pickenpaugh reported on a successful Land Records Conference in July with strong representation of the PLSO on hand.
- Don Pickenpaugh reported on URISA's efforts to plan the agenda for the GIS conference in September.
- P.A.C. fund balance = \$2,258.35. Personnel check donations are being accepted.
- The "Ohio Valley Festival Days" at Old Fort Steuben was a great success. Many surveying related exhibits and events were enjoyed.

### **N.S.P.S. Governor** Robert Akins reported;

- 44 states have joined at this point.
- He reminded all of Kurt Sumner's 1 hour radio program each week. Tune into to get in on discussions of many interesting surveying issues.
- He asked that anyone having questions and/or comments contact him directly.
- The National office is asking for a volunteer to monitor and report on each state's activities to update NGS monumentation. Anyone interested should contact him.
- The next NSPS meeting is in Kansas in August and he is requesting funds for travel in the amount of \$1500. Motion on the floor was made by Steve McCall and seconded by Curt Deibel. Voice vote on the floor approved the motion.
- He discussed having a joint meeting with NSPS and PLSO at Kalahari in October of 2015.
- He is looking for comments on membership benefits ideas.
- Much discussion was made as to the dues process. There are some issues, such as to how dues move through the system and how special conditions will be addressed that are confusing members.
- Director Gilpin clarified many of the issues but some bugs will still need to be worked out.
- Director Gilpin is recommending a \$40 value coupon to be issued to out of state surveyors who choose to join PLSO since they cannot receive NSPS membership from our state. Coupon would be good for an on-line CPD class or possibly toward PLSO events.
- Coupons would be traceable and protected from mis-use.
- A motion to provide coupons was put on the floor by Tim Schram and seconded by Bob Akins. Voice vote taken and passed.
- Motion made by Steve McCall, seconded by Jim Myers to invite NSPS to join us at the Fall Conference in 2015 at Kalahari in Sandusky, Ohio. Voice vote taken and passed.

- Fall Seminar Updates: 2014 - Oct. 16-18, 2014 - Great Wolf Lodge, Mason, OH, (Cont'd on Page 7)





**Precision Laser  
& Instrument, Inc.**  
www.laserinst.com

Construction • Survey • GIS

Sales • Service • Rentals • Training • Support



FOCUS 30



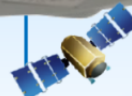
Ranger 3



Nivo C Series



EPOCH 50



**New 6G w/ 240 GNSS Channels**  
For Monitoring All GNSS Systems!  
(GPS, GLONASS, SBAS, etc.)

**Z-Blade GNSS-Centric Technology**  
For Optimal RTK Performance Anywhere!

**Anti-Theft Protection**  
To Keep Your Equipment Safe!

**Built-in WiFi, GSM/UMTS & 3.5G**  
For SMS & Email Alerts!

**Inside-The-Rod Mounted UHF Antenna**  
For extended RTK Radio Performance!

**Rugged, Waterproof & Ergonomic**

**Dual, Hot-Swappable Batteries**

**Featuring the SP80 GNSS Receiver**  
**The Most Connected GNSS Receiver**

The Spectra Precision SP80 is a next generation GNSS receiver that combines decades of GNSS RTK technology with revolutionary new GNSS processing.



**Locations:**



"We're focused on YOU!"

**Pittsburgh Office**

85 11<sup>th</sup> Street  
Ambridge, PA 15003  
Ph: (724) 266-1600  
Fax: (724) 266-8161

**Columbus Office**

372 Morrison Rd., Suite D  
Columbus, OH 43213  
Ph: (614) 759-1000  
Fax: (614) 759-7059

**Cincinnati Office**

820-B Lebanon Street  
Monroe, OH 45050  
Ph: (513) 539-0022  
Fax: (513) 539-0033

**Akron Office**

2567 S. Arlington Rd., Suite 5  
Akron, OH 44319  
Ph: (330) 633-4900  
Fax: (330) 633-4999

**WV Office**

504 Old Goff Mtn. Rd.  
Cross Lanes, WV 25313  
Ph: (304) 776-1831  
Fax: (304) 776-6790

**Delegate's Report** (from Page 5)

Program Committee. On-line registration opens next week. Pricing is the same as last year, all is ready.

- Education – Mr. Cahill reported he is working on a networked committee structure. He passed out a map showing the proximity of University/colleges to sponsoring chapters with the idea of developing a support structure.
- Legislation – Director Gilpin reported Statue of Limitation has passed. It goes into section 2305.09 of O.R.C. It will go into effect 9/19/14.
- Scholarship – Rocky Lomano
- Four applicants for the \$2000 scholarship and three for the \$1000 were reviewed by the committee and they voted to award them to:

Jonathan Anderson - U of A. \$2000, Thomas Barker - U of A. \$2000,  
Kevin Strauser - U of A. \$2000, Anthony Hericks - Cin. State \$1000,  
Chad Neikirk - O.S.U. \$1000, Kyle Parker - O.S.U. \$1000.

Adjourned at 8:24 PM.

Respectfully submitted,

Thomas M. Snezek, PS  
Acting Chapter Delegate and State Secretary

# Jake's Stakes

## AMISH MADE

8200 Camp Road Homerville, Ohio

### SURVEYING and CONSTRUCTION STAKES

**High quality, light colored, HARDWOOD and smooth**

#### MARKER STAKES

18" x 1 5/8" x 1/2"	Bundle of 50
24" x 1 5/8" x 1/2"	\$0.18 ea
30" x 1 5/8" x 1/2"	\$0.20 ea
36" x 1 1/2" x 7/16"	\$0.25 ea
48" x 1 1/2" x 7/16"	\$0.28 ea
48" x 7/8" x 1/2"	\$0.36 ea
	\$0.24 ea

■ ■ ■ ■ ■ ■ ■ ■ ■ ■  
**NO ORDER TOO  
SMALL or TOO  
FAR**  
■ ■ ■ ■ ■ ■ ■ ■ ■ ■

#### SQUARE HUBS

12" x 2" x 2"	Bundle of 25
18" x 2" x 2"	\$0.24 ea
22" x 2" x 2"	\$0.32 ea
	\$0.36 ea

#### WEDGES HUBS

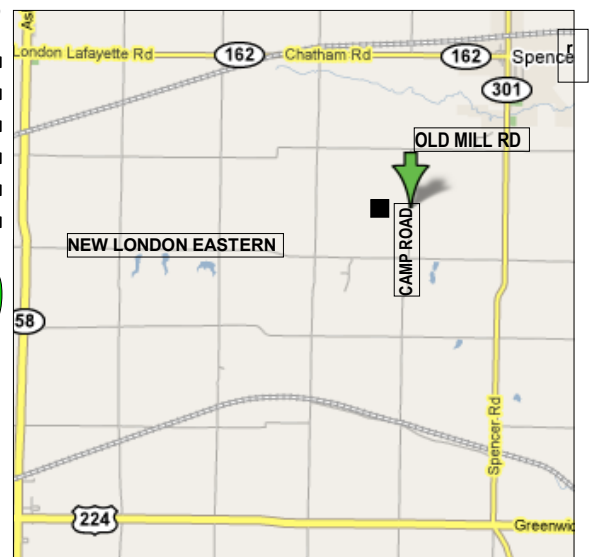
22" HUB MARKER	Bundle of 50
9"	\$0.13 ea/Bundle of 100
12"	\$0.13 ea
	\$0.15 ea

#### METAL REBAR RODS

Available Any Length Call for \$

**ORDERS FILLED  
RAPIDLY!**

**FREE DELIVERY ON  
LARGE ORDERS**



**IF WE DON'T HAVE IT - WE MAKE IT!**

**DELIVERY AVAILABLE : CALL Dwight at Spencer Feed & Supply 330-648-2111**

**\* WE DELIVER ANYWHERE \* WE DELIVER ANYWHERE \* Fax Orders: Attn.**

(Cont'd on Page 10)

## Cleveland Chapter of PLSO 2014 Calendar

Chapter Executive Meetings are held 6 p.m. at the office of Neff & Associates at 6405 York Road Parma Heights and are open to all PLSO members who want to attend.

**Sep 4** Seminar Meeting  
**Sep 12** PLSO Executive Meeting  
**Sep 15** Chapter Executive Meeting  
**Sep 19** Cleveland Surveying News deadline  
  
**Oct 2** Social Dinner or Seminar  
**Oct 16** PLSO Executive Meeting at Fall Seminar

**Oct 20** Chapter Executive Meeting  
**Oct 23** Cleveland Surveying News deadline

**Nov 6** Seminar Meeting  
**Nov 14** PLSO Executive Meeting  
**Nov 17** Chapter Executive Meeting  
**Nov 21** Cleveland Surveying News deadline

**Dec 8** Chapter Executive Meeting (if needed)

## 2015

**Jan 10** PLSO Executive Meeting  
**Jan 12** Chapter Executive Meeting  
**Jan 13** Cleveland Surveying News deadline  
**Jan 22** Annual Meeting

## Chapter Executive Committee Meeting

Our next executive meeting is near the end of Summer:

When: **Monday September 15**  
Time: 6:00 pm  
Where: Neff & Associates at 6405 York Road, Parma Heights

*We have **2014** Officer openings at President, President-Elect, and Delegate.*

*Being an active participant in an officer or committee position earns you 2 PDHs of continuing education per year!*



**Aerocon Photogrammetric Services Inc**  
Dedicated to providing quality photogrammetric services since 1967

- **Aerial Photography**
- **Digital Orthophotography**
- **Digital Topographic Mapping**
- **Analytical Triangulation**
- **DTM/DEM Surface Generation**
- **LiDAR**
- **Airborne GPS**
- **GIS Services**
- **Volumetric Inventories**

4515 Glenbrook Road  
Willoughby, OH 44094-8215  
440.946.6277  
440.946.2646 Fax  
e-mail: [skymap@aerocon.com](mailto:skymap@aerocon.com)  
[www.aerocon.com](http://www.aerocon.com)





## Education Recognition Dinner

### Scholarship Team



Chapter Scholarship Committee Chairman and PLSO Past President George Hofmann (left), Scholarship Recipient Joshua Matejin (center), Chapter Scholarship Coordinator Steven Metcalf (right)

Not pictured: Thomas Roach also received a scholarship from the Cleveland Chapter but was unable to attend.

### Trig\*Star Team



St. Edward Mathematics Teacher Timothy Tubbs (left), Cleveland PLSO's Trig\*Star high scorer [2nd year in a row] and Academic Challenge alternate Greg Pataki (center), Chapter Trig\*Star Chairman and Past President Peter D. Zwick PE, PS (right)



### Officers

President:	_____	. PS
President-Elect:	_____	. PS
Delegate:	_____	. PS

We are still in need to fill the following chapter office positions:

Offices of President, President-Elect, and Delegate *must* be filled by a Chapter member of Professional, Life, or Retired categories.

### 2014 Advertising Rates

Full page: 9.6"h x 7.3"w \$400 yr.  
 1/2 page: 4.8"h x 7.3"w \$200 yr.  
 1/4 page: 4.8"h x 3.6"w \$100 yr.  
 Contact: [robert.hoy7@hotmail.com](mailto:robert.hoy7@hotmail.com)

### ADVERTISERS

2	Leica Geosystems	8	Aerocon Photogrammetry
4	GeoShack	10	Imaginit Technologies
6	Precision Laser & Inst.	13	City Blueprint of Toledo
7	Jake's Stakes	14	Roberts Surveying Supplies



REALITY

MODELING

# Capture Reality. Model Dreams.

At the intersection of reality capture and modeling are  
point clouds, workflows and high definition scanning.

Partner with an organization that knows all three.

IMAGINiT Technologies Scanning Solutions.  
**YOUR PROBLEM. SOLVED.**

**IMAGINiT**  
TECHNOLOGIES

**216.834.8300**  
**www.imaginit.com**

**AUTODESK**  
Platinum Partner

**Specialization**

Building  
Civil Infrastructure  
Product Design & Manufacturing  
Government  
Education

**Value Added Services**

Consulting Specialized  
Product Support Specialized  
Authorized Training Center

**Leica**  
Geosystems



## Innerbelt Bridge

(you're driving on it)

CSN Follow-up: Surveyor not "Red-Faced"

Two years ago, our home-town newspaper ran a front-page story about the construction of the new Innerbelt Bridge in downtown Cleveland. Unfortunately the story asserted that a "red-faced" surveyor likely was responsible for a prominent layout mistake ([click for newspaper article](#)). CSN promptly criticized this assertion because it was not based upon any facts ([CSN Sept. 2012](#)).

A surveyor did not make the error--it was evidently that of the design-build team back at the office. According to sources familiar with the project who spoke on the condition of anonymity: the office staff, in their rush to fast-track this project, mistakenly forwarded a different version of the layout plan to its surveyor. Unfortunately, this blunder was not detected until one of the bridge piers had been constructed several feet out of proper alignment.

Reportedly, it was a (Cont'd on Page 14)



An *invaluable* tool for Cleveland Chapter members is exclusive access to the Survey Bank containing thousands of surveys in our area. Painstakingly catalogued by member volunteers, this is a searchable database covering Cuyahoga County with overlap into adjoining counties.

Website:

# PLSO.info

Free Cleveland Chapter Member login

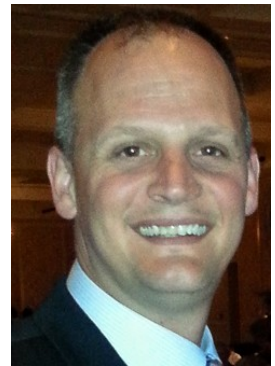
Contact the Website Committee Chair:

Dino Lustri  
[dino@dles.co](mailto:dino@dles.co)

## Executive Committee Meeting Highlights

August 18, 2014

6:15 p.m.



**Steven Metcalf**  
Secretary

---

In attendance: Robert Hoy, Tim Feller, and Steve Metcalf.

### **Treasury & Finance:**

The Proposed 2015 Budget was presented by Mr. Feller, reviewed and discussed.

### **Chapter Delegate:**

No one was in attendance for the delegate report.

### **Committees:**

#### **Program Committee:**

Mike Kral, the new PLSO Social Chair (not in attendance) has been investigating new locations for the next social meeting is dated for Sept. 4. The location of Winking Lizard was proposed by Tim Feller. The costs, menu options, and were to be finalized.

#### *New possible seminar Topic to be discussed:*

GPS/ VRS & Best practices – Gary Schuler – Univ. of Akron.

An open discussion format is be used, and a sign in GPS user checkbox will be utilized.

### **Golf Outing:**

Tom Snezek was not in attendance, but the Golf Outing date of June 27 was successful.

### **Education/ Scholarship Committee:**

Steve Metcalf to Speak to University of Akron students about the Scholarship again this year.

### **Elections:**

Robert Hoy discussed having a Past Presidents meeting for the state of Chapter and attendance. Ways to draw in new members or get better member participation was heartily debated.

### **New Business:**

#### **Surveyor Toys:**

Robert Hoy investigated and obtaining information that the PlayMobil Surveyors Toys shown on a prior newsletter cover photo, will be coming available in August in the U.S. for a cost of only \$6.00/ per set. A discussion was made to use the Toys as prizes at meetings for participation. Also donating the Toys during "Toy for Toys" or even to locate libraries for use.

#### **PLSO – Field Shirts:**

Steve Metcalf presented the idea of ordering and/ or offering Cleveland Chapter PLSO field shirts with the Logo and "Survey Crew or Surveyor" on the back. The sweat wicking type shirts were discussed and the cost per shirt for a large was about \$9.50 per shirt, depending on amount purchased, from a local vendor. Tim Feller discussed using these as prizes at meetings for participation as well.

Meeting called to close at 8:00 p.m.





**Sales • Service • Rental • Leasing • Training • Support**

**Mapping, Scanning and Surveying Solutions**

**Serving Ohio for over 47 years**



*Authorized Dealer*

**3455 Briarfield Blvd – Suite D**

**Maumee, OH 43537**

**Tel: 800-548-1503**

**Fax: 419-243-6418**

**info@cityblueprintoftoledo.com**

**[www.cityblueprintoftoledo.com](http://www.cityblueprintoftoledo.com)**

**Innerbelt Bridge** (from [Page 11](#))

very expensive mistake.

This is certainly not the first construction slip-up of this type, and may not be the last. I suspect that the accelerated project schedule greatly contributed to its cause (most construction projects do seem to be hurried).

We professionals should take heed, and we should redouble our efforts to minimize such influences on the quality of our work. Every day, we should strive to communicate the value of our contributions to the project, and we should seek appropriate compensation for our services.

-Peter Zwick, PS, PE

*CSN: The author of the 2012 article does not work for the newspaper anymore, but he can be found on Twitter at: [twitter.com/TomBreck](https://twitter.com/TomBreck). Maybe it's a good thing he no longer writes news articles.*

**October 2 Meeting**

We plan to have either a social dinner or a seminar dinner in October. Look for details in an upcoming email and the October CSN.

Possible topics, Group Discussions of:

- GNSS Best Practices
- Construction Surveying (Staking) Best Practices

**Scholarship**

At our May Executive Committee meeting, the Cleveland Chapter awarded scholarship to two University of Akron Students. Remember these students, and hopefully they will be working at your company in the near future. Congratulations!

Thomas Roach ~ \$1,000.00

Joshua Matejin ~ \$500.00

**HIGH GRADE HARDWOOD SURVEY STAKES****DELIVERY AVAILABLE**

- TOPCON DEALER
- SOKKIA DEALER
- FIELD SUPPLIES
- INSTRUMENT SALES, SERVICE & RENTAL
- GPS TECHNOLOGIES
- FIELD EQUIPMENT



# ROBERTS

## Surveying Supplies

[WWW.ROBERTSSURVEYING.COM](http://WWW.ROBERTSSURVEYING.COM)

5758 Ridge Road Parma, Ohio 44129

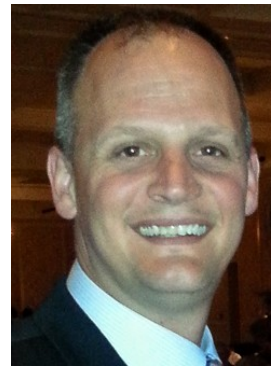
Phone (440) 842-2218

Fax (440) 842-0802



## Executive Committee Meeting Minutes

May 12, 2014



**Steven Metcalf**  
Secretary

Neff & Associates: 6405 York Road, Parma Heights, OH 44130

- Meeting called to order at 6:15 p.m.
- In attendance: Robert Hoy, George Hofmann, Tim Feller, Michael Ackerman, and Steve Metcalf.

### Secretary's minutes:

Executive Committee meeting minutes from April 2014 conditionally accepted with typo revisions as submitted by Steve Metcalf.

### Treasury:

Tim Feller submitted April 2014 treasury report, report was subject to review. A \$50.00 donation was made to Youngstown State in memory of Jack McFadden. The Chapter received a nice Thank You note from Mary Kay McFadden for the donation.

### Chapter Delegate:

- Michael Ackerman attended the meeting in Columbus and read from the delegate report. One (1) new member was added to the Ohio Valley Chapter. An OGRIP update was made with Southeastern Ohio left to map. The statute of limitations bill was moving along nicely.
- Melinda Gilpin asked for local surveyors for specific complaints or issues with OUPS; about lack of field markings, plans responses, etc.. This information is to be emailed to her for follow up.

### Committees:

**Membership Committee:** No new members were added or re-instated.

### Newsletter Committee:

Robert Hoy announced the deadline for submission would be Deadline of May 16th is required for the June newsletter. Tim Feller spoke about Len Horowitz, of Imaginit Technologies, attending the May 1 seminar. Tim said it was nice to see an advertiser attend the CPD event and be active.

### Website Committee:

Website address: [www.plso.info](http://www.plso.info)

Robert Hoy & Dino Lustri has requested pricing and suggestions from Kevin Grisby to combine the Chapter website and the [www.plso.info](http://www.plso.info), login management, and adding some new elements, upgrades, and upgrades to the website in general.

### Program Committee:

- Mike Kral, the new PLSO Social Chair (not in attendance) and Bob Hoy were to speak about the arrangements for the next social meeting is dated for June 5. The location of Behind the Woods in Westlake, the costs, menu options, and were to be finalized.
- The Trig\*Star winner and the Cleveland Chapter PLSO scholarship presentations to be held at that meeting.
- *New possible seminar Topics included:* Peter Zwick – Construction Calcs's/ Layout, GPS/ VRS & Best practices – Gary Schuller – Univ. of Akron.

**Golf Outing:** Tom Snezek was not in attendance, but the Golf Outing date of June 27th was announced with the information to be included in this month's newsletter.

### Education/ Scholarship Committee:

- Ken Hedjuk, Tom Snezek, and George Hofmann, members of the Scholarship (Cont'd on [Page 16](#))

## Executive Minutes (from [Page 15](#))

Committee, met and determined the recipients of Cleveland Chapter PLSO scholarships. Two are to be awarded.

- A motion to award in the amount of \$1000.00 was made and passed for Thomas Roach
- A motion to award in the amount of \$ 500.00 was made and passed for Joshua Matejin.
- Both recipients are University of Akron students.
- A motion was made by: Secretary Steve Metcalf to award the scholarships per the Committee's recommendations And seconded by Tim Feller, and approved as recommended.
- The students will be allowed to bring up to (2) family members of which the PLSO will pay for their dinners at the Social meeting and presentation.
- Trig\*Star Committee: Peter D. Zwick, this will be his last year for the Trig\*Star testing.

### Finance:

- The 2014 Budget is due at the next EXCOM meeting.
- Tim Feller, Treasurer to compile and provide as required.

**Elections:** Still looking for officers to fill vacant positions. We have 2014 Officer openings at President, President-Elect, and Full-time Delegate. Robert Hoy, Past- President.

### New Business:

- Cleveland Scanned Survey Databank: (*Rick McCann*) George Hofmann has met and is working with Rick McCann on obtaining his surveying records for the Cleveland Scanned Survey Databank. Volunteers to organize the records obtained will be needed. Scanning and processing of the records will be forth coming. No update given:
- (*Wight-O'Rourke Co's*) John Dailey is waiting for Pat Janice's daughter in law to return, records work in waiting. Some basic pricing and the options were offered by Dan Neff of Neff & Associates for scanning these files, naming, and timings.
- Surveyor Toys: Robert Hoy investigated and obtaining information that the PlayMobil Surveyors Toys shown on a prior newsletter cover photo, will be coming available in August in the U.S. for a cost of only \$6.00/ per set. A discussion was made to either donate some toys to area library toys exchanges or uses them as Future Golf outing items. The Chapter has previously purchased coloring books to add to the items for use as well.
- PLSO – Field Shirts: Steve Metcalf presented the idea of ordering and/ or offering Cleveland Chapter PLSO field shirts with the Logo and "Survey Crew or Surveyor" on the back. The sweat wicking type shirts were discussed and the cost per shirt for a large was \$9.50 per shirt from a local vendor. Tim Feller discussed the possibility of using this as an item for the golf outing attendees or other event. He liked that when working in the field and wearing the shirt, it promoted organization via the logo, and explained to the public what surveyors do and that we are around every day.
- ALTA Standards: George Hofmann presented a print out to all attendees of the 2016 suggestions (dated 5/7/2014) from Gary Kent to the NSPS: of possible revisions to the ALTA standards. This item was tabled for review at the next meeting to due inclement weather and Tornado Warnings via cell phones.

Meeting called to close at 8:04 p.m.